

# TFR

A VIP temporary flight restriction has been scheduled for **Thursday, June 15<sup>th</sup> at 1430 UTC or 1830 local**. Also on **Friday, June 16<sup>th</sup> at 1600 UTC or 2000 local**. Centered at Miami International Airport, MIA. The outer (30nm) ring of this TFR will fall within close proximity to Fort Lauderdale Executive Airport, FXE.

Pilots are encouraged to check all NOTAMs often for any updates regarding this flight restriction.

Specific instructions and restrictions will be available at <http://tfr.faa.gov> once the FAA issues the NOTAM.




[TFR List](#)
[TFR Map](#)
[Map Airports](#)
[TFR Help](#)
[PilotWeb](#)
[SUA](#)
[XML](#) [AIMS](#) **NOTAM**
**Number :** [FDC 7/1042](#) Download shapefiles

**Issue Date :** June 13, 2017 at 1218 UTC  
**Location :** MIAMI, Florida  
**Beginning Date and Time :** June 15, 2017 at 1430 UTC  
**Ending Date and Time :** June 16, 2017 at 1915 UTC  
**Reason for NOTAM :** Temporary flight restrictions for VIP Movement  
**Type :** VIP  
**Replaced NOTAM(s) :** N/A

**Jump To:** [Affected Areas](#)  
[Operating Restrictions and Requirements](#)  
[Other Information](#)

**Affected Area(s)**
[Top](#)
**Area A**
**Airspace Definition:**

**Center:** On the DOLPHIN VORTAC (DHP) 099 degree radial at 3.1 nautical miles. (Latitude: 25°47'45"N, Longitude: 80°17'29"W)  
**Radius:** 3 nautical miles  
**Altitude:** From the surface up to and including 2999 feet AGL

**Effective**
**Date(s):**

From June 15, 2017 at 1430 UTC (June 15, 2017 at 1030 EDT)  
 To June 15, 2017 at 1545 UTC (June 15, 2017 at 1145 EDT)

**Area B**
**Airspace Definition:**

**Center:** On the DOLPHIN VORTAC (DHP) 209 degree radial at 2.5 nautical miles. (Latitude: 25°45'41"N, Longitude: 80°22'07"W)  
**Radius:** 3 nautical miles  
**Altitude:** From the surface up to and including 2999 feet AGL

**Effective**
**Date(s):**

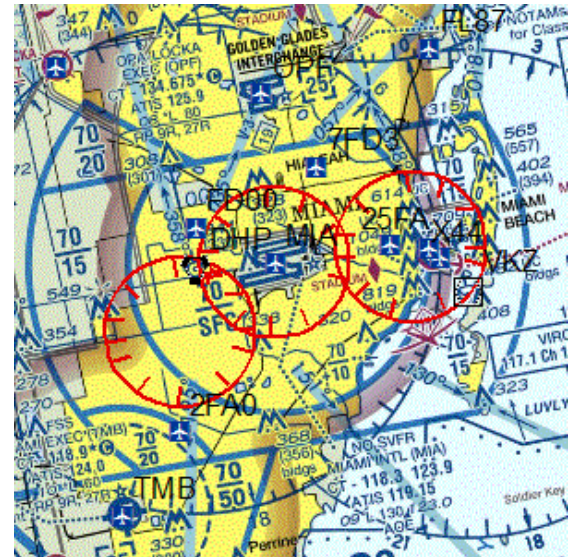
From June 15, 2017 at 1530 UTC (June 15, 2017 at 1130 EDT)  
 To June 15, 2017 at 2030 UTC (June 15, 2017 at 1630 EDT)

**Area C**
**Airspace Definition:**

**Center:** On the VIRGINIA KEY VOR/DME (VKZ) 323 degree radial at 3 nautical miles. (Latitude: 25°47'23"N, Longitude: 80°11'27"W)  
**Radius:** 3 nautical miles  
**Altitude:** From the surface up to and including 2999 feet AGL

**Effective**
**Date(s):**

From June 15, 2017 at 2000 UTC (June 15, 2017 at 1600 EDT)  
 To June 16, 2017 at 1815 UTC (June 16, 2017 at 1415 EDT)


[Click for Sectional](#)
[NOTAM Text](#)

**Area D****Airspace****Definition:**

Center: On the DOLPHIN VORTAC (DHP) 099 degree radial at 3.1 nautical miles. (Latitude: 25°47'45"N, Longitude: 80°17'29"W)

Radius: 3 nautical miles

Altitude: From the surface up to and including 2999 feet AGL

**Effective****Date(s):**

From June 16, 2017 at 1800 UTC (June 16, 2017 at 1400 EDT)

To June 16, 2017 at 1915 UTC (June 16, 2017 at 1515 EDT)

**Operating Restrictions and Requirements**[Top](#)

No pilots may operate an aircraft in the areas covered by this NOTAM (except as described).

Except the flight operations listed below:

1. Aircraft arriving or departing KMIA airport.
2. Law enforcement, firefighting, and medevac/air ambulance flights on active missions.
3. Aircraft operations necessitated for safety or emergency reasons.
4. All aircraft approved to operate within the TFR must be squawking an ATC discrete code at all times while in the TFR and must remain in two-way radio communications with ATC.

**Other Information:**[Top](#)

ARTCC: ZMA - Miami Center

Authority: Title 14 CFR section 91.141

Depicted TFR data may not be a complete listing. Pilots should not use the information on this website for flight planning purposes. For the latest information, call your local Flight Service Station at 1-800-WX-BRIEF.



**U.S. Department of  
Transportation**  
Federal Aviation Administration  
800 Independence Avenue, SW  
Washington, DC 20591  
1-866-TELL-FAA (1-866-835-5322)

**Readers &  
Viewers****Web Policies**

[Web Policies & Notices](#)  
[Privacy Policy](#)  
[Accessibility](#)

**Government  
Sites**

[Transportation.gov](#)  
[USA.gov](#)  
[Plainlanguage.gov](#)  
[Regulations.gov](#)  
[Data.gov](#)

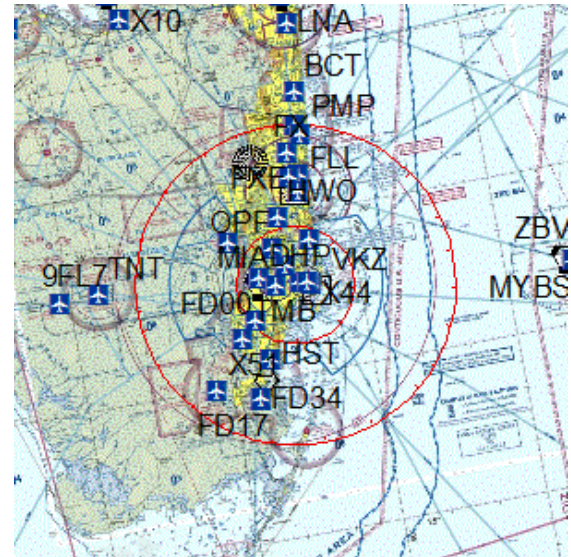
**Contact Us**

Customer Support:  
[1-866-466-1336](tel:1-866-466-1336)  
Email: [7-AWA-NAIMES@faa.gov](mailto:7-AWA-NAIMES@faa.gov)


[TFR List](#)
[TFR Map](#)
[Map Airports](#)
[TFR Help](#)
[PilotWeb](#)
[SUA](#)
[XML](#) [AIMS](#) **NOTAM**
**Number :** **FDC 7/1932** [Download shapefiles](#)

**Issue Date :** June 14, 2017 at 1321 UTC  
**Location :** MIAMI, Florida  
**Beginning Date and Time :** June 16, 2017 at 1600 UTC  
**Ending Date and Time :** June 16, 2017 at 1915 UTC  
**Reason for NOTAM :** Temporary flight restrictions for VIP Movement  
**Type :** VIP  
**Replaced NOTAM(s) :** N/A

**Jump To:** [Affected Areas](#)  
[Operating Restrictions and Requirements](#)  
[Other Information](#)


**Affected Area(s)**
[Top](#)
**Area A**
**Airspace Definition:**

**Center:** On the VIRGINIA KEY VOR/DME (VKZ) 301 degree radial at 4.3 nautical miles. (Latitude: 25°47'06"N, Longitude: 80°13'29"W)  
**Radius:** 30 nautical miles  
**Altitude:** From the surface up to and including 17999 feet MSL

**Effective**
**Date(s):**

From June 16, 2017 at 1600 UTC (June 16, 2017 at 1200 EDT)  
 To June 16, 2017 at 1915 UTC (June 16, 2017 at 1515 EDT)

**Area B**
**Airspace Definition:**

**Center:** On the VIRGINIA KEY VOR/DME (VKZ) 301 degree radial at 4.3 nautical miles. (Latitude: 25°47'06"N, Longitude: 80°13'29"W)  
**Radius:** 11 nautical miles  
**Altitude:** From the surface up to and including 17999 feet MSL

**Effective**
**Date(s):**

From June 16, 2017 at 1600 UTC (June 16, 2017 at 1200 EDT)  
 To June 16, 2017 at 1915 UTC (June 16, 2017 at 1515 EDT)

[Click for Sectional](#)
[NOTAM Text](#)
**Operating Restrictions and Requirements**
[Top](#)

No pilots may operate an aircraft in the areas covered by this NOTAM (except as described).

Except as specified below and/or unless authorized by ATC in consultation with the air traffic security coordinator via the domestic events network (DEN):

A. All aircraft operations within the 11 NMR area(s) listed above, known as the inner core(s), are prohibited except for: Approved law enforcement, military aircraft directly supporting the United States Secret Service (USSS) and the office of the President of the United States, approved air ambulance flights, and regularly scheduled commercial passenger and all-cargo carriers operating under one of

the following TSA-Approved standard security programs/procedures: aircraft operator standard security program (AOSSP), full all-cargo aircraft operator standard security program (FACAOSSP), model security program (MSP), twelve five standard security program (TFSSP) all cargo, or all-cargo international security procedure (ACISP) and are arriving into and/or departing from 14 cfr part 139 airports. All emergency/life saving flight (medical/law enforcement/firefighting) operations must coordinate with ATC prior to their departure at 305-869-5432 to avoid potential delays.

B. For operations within the airspace between the 11 nmr and 30 nmr area(s) listed above, known as the outer ring(s): All aircraft operating within the outer ring(s) listed above are limited to aircraft arriving or departing local airfields, and workload permitting, ATC may authorize transit operations. Aircraft may not loiter. All aircraft must be on an active IFR or VFR flight plan with a discrete code assigned by an air traffic control (ATC) facility. Aircraft must be squawking the discrete code prior to departure and at all times while in the TFR and must remain in two-way radio communications with ATC.

C. The following operations are not authorized within this TFR: flight training, practice instrument approaches, aerobatic flight, glider operations, seaplane operations, parachute operations, ultralight, hang gliding, balloon operations, agriculture/crop dusting, animal population control flight operations, banner towing operations, sightseeing operations, maintenance test flights, model aircraft operations, model rocketry, unmanned aircraft systems (UAS), and utility and pipeline survey operations.

D. FAA recommends that all aircraft operators check notams frequently for possible changes to this TFR prior to operations within this region.

## Other Information:

[Top](#)

ARTCC: ZMA - Miami Center  
 Authority: Title 14 CFR section 91.141

Depicted TFR data may not be a complete listing. Pilots should not use the information on this website for flight planning purposes. For the latest information, call your local Flight Service Station at 1-800-WX-BRIEF.



U.S. Department of  
 Transportation  
 Federal Aviation Administration  
 800 Independence Avenue, SW  
 Washington, DC 20591  
 1-866-TELL-FAA (1-866-835-5322)

### Readers & Viewers



### Web Policies

[Web Policies & Notices](#)  
[Privacy Policy](#)  
[Accessibility](#)

### Government Sites

[Transportation.gov](#)  
[USA.gov](#)  
[Plainlanguage.gov](#)  
[Regulations.gov](#)  
[Data.gov](#)

### Contact Us

Customer Support:  
 1-866-466-1336  
 Email: [7-AWA-NAIMES@faa.gov](mailto:7-AWA-NAIMES@faa.gov)