

COMMUNITY RATING SYSTEM (CRS) PROGRESS REPORT

The Broward County Enhanced Local Mitigation Strategy (ELMS) serves as the Floodplain Management Plan for the City of Fort Lauderdale for the purpose of the Community Rating System (CRS) Activity 510. The City of Fort Lauderdale continues to participate in the Local Mitigation Strategy Working Group and Planning Committee to monitor progress, make updates, and revise the ELMS. One of the requirements to maintain credit for this activity is the preparation and distribution of an annual progress report. The progress report is prepared by the City of Fort Lauderdale CRS Workgroup and will continue to be prepared on an annual basis. It is submitted to our governing body, the Fort Lauderdale City Commission, and is available on our website for public review. Please see www.fortlauderdale.gov. A copy was also distributed to the local major newspaper, the *Sun-Sentinel*. The following is a review of progress.

Program Updates

- 1) A comprehensive stormwater management presentation was made to the City Commission in January 2014 highlighting the following:
 - a. Changing the design Level of Service (LOS) from a 5 yr/24hr storm event to a 10 yr/24 hr storm event.
 - b. Introducing a comprehensive multi-year Stormwater Plan:
 - i. Phase I- Est. cost: \$7-\$10 million (funded)
 1. Projects identified (more details under structural projects)
 2. Design study of Phase II projects
 - ii. Phase II - Est. design: \$11-\$13 million (funded)
 1. Seven neighborhood improvements projects
 2. Citywide modeling
 3. Financial study for Phase III
 - iii. Phase III - Est. cost: \$900 million - \$1.2 billion (unfunded)
 1. Construction of Phase II projects and adaptability to climate change and sea level rise.

- 2) Stormwater maintenance has increased by \$50,000 due to newly completed projects in Phase 1 of the Stormwater Plan. These funds will be used to maintain tidal valves that have been installed throughout the city. The maintenance will include replacement parts, additional pipes and other stormwater related repair materials/supplies. Last year's fiscal initiative to improve the level of service of stormwater maintenance to semi-annual (2x/year) inspection of 100% of the City catch basins continues, as does the City's 24/7 hour customer service center which is responsible for coordinating the utilities section responses to neighbor concerns by dispatching crews to address and prevent problems.

Activity 510
2014

3) The City of Fort Lauderdale has a National Pollutant Discharge Elimination System (NPDES) permit that it operates under to protect the waterways under the Clean Water Act. As part of that initiative, the Environmental Services and Regulatory Affairs Section conducts flooding investigations, inspects construction sites larger than one acre, reviews dewatering plans, collects samples, provides outreach material, installs waterway protection markers, protects the stormwater infrastructure, and responds to environmental issues that affect the City. .

4) The City continues to administer and seek funding opportunities to improve stormwater management. The City was fortunate this year to receive two legislative appropriations from the State of Florida:

a) \$150,000 for dredging maintenance.

b) \$700,000 for tidal valves and stormwater upgrades.

5) The City new Flood Insurance Rate Maps (FIRMs) went into effect on August 18, 2014.

6) The City revised their Floodplain Ordinance in June 2014 to be consistent with the state model ordinance and National Flood Insurance Program (NFIP) guidelines. The new ordinance also adopts higher regulatory standards.

7) Staffing has increased to include a Stormwater Operations Manager and a full time Floodplain Manager. These two dedicated positions will enhance our capabilities related to floodplain management.

Property Protection Activities

The City continues to notify our neighbors of the importance of flood protection through outreach activities as well as direct correspondence to our repetitive loss properties. Currently, the City has 78 repetitive loss properties and sent notices to 1449 properties in the repetitive loss areas.

Another exciting opportunity the City is working on is a collaborative research project with the United States Air Force Academy and the Florida Department of Emergency Management. The goal of the project is to develop a flood buyout program decision support tool for use at the community level for planning and responses to floods.

The biggest change this year has been the adoption of a new floodplain ordinance based on the state model ordinance. The City took this opportunity to adopt higher regulatory standards that will enhance our CRS program. Those higher regulatory standards are:

- 1) Non-conversion agreements for enclosures greater than 4'
- 2) Prohibiting the use of fill to elevate buildings and structures
- 3) 1' of freeboard
- 4) Cumulative and substantial improvements

Activity 510
2014

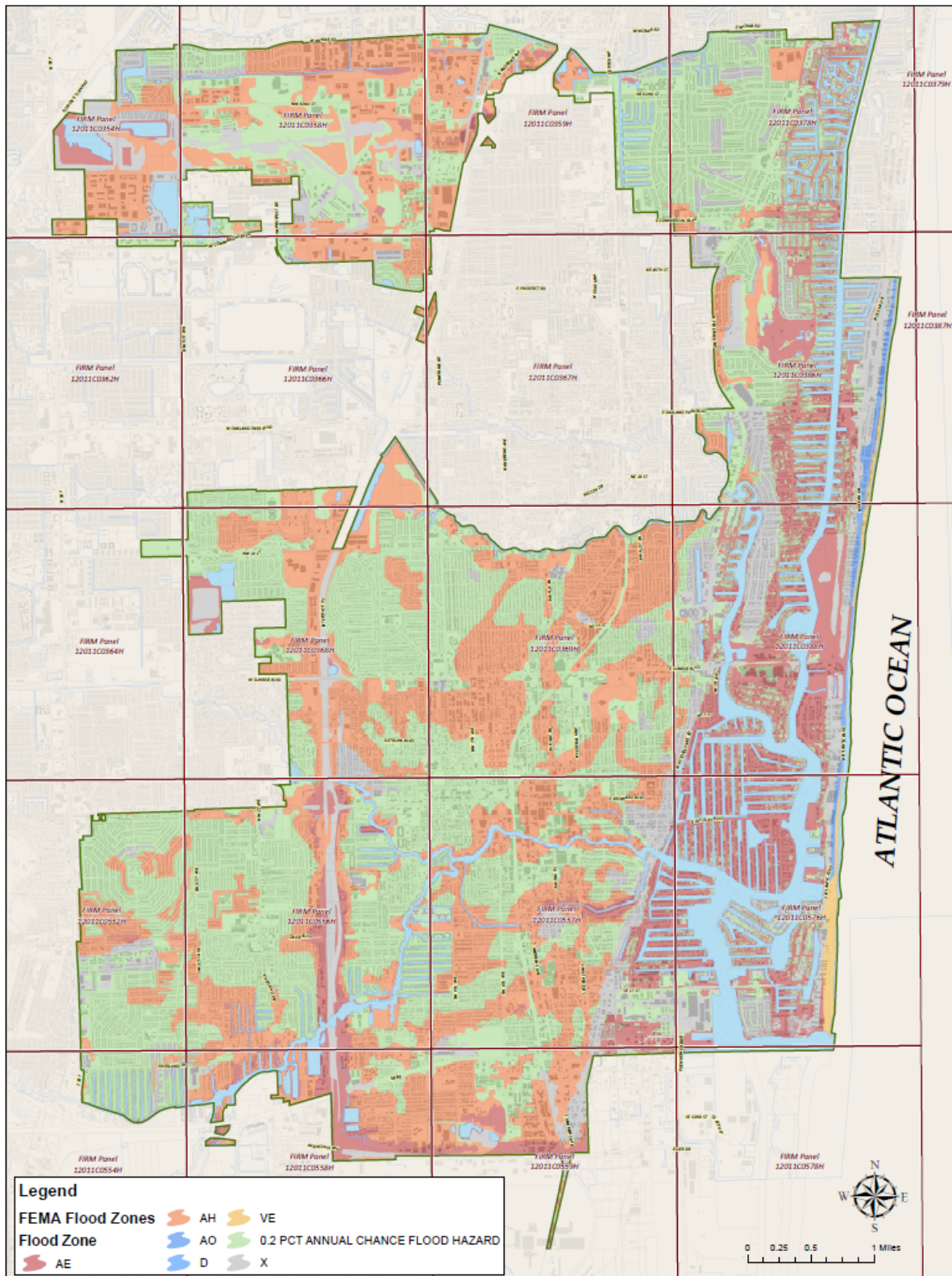
The ordinance went into effect June 2014.

Floodplain Protection Activities

Below is a map of the protected open space within the City's floodplain. No net increase was realized for the 2012/2013 year.

- Total area of the City – 22565 Acres
- 17.71 Square Miles Total area of flood zones (not x) within the City
- 13237 Acres, 20.68 Square Miles total area of water within the City
- 2185 Acres, 3.41 Square Miles of open space

Activity 510
2014



Activity 510
2014

Emergency Service Activities

The City was fortunate this year to not experience any flooding events that required activation of our emergency services. However, the City did perform some preparedness activities such as holding the 1st annual Hurricane Expo which allowed our neighbors to learn about flooding and how to be prepared for flooding and wind events. The City conducted a full scale interactive table top exercise dealing with flooding which included full Emergency Operations Center (EOC) activation. The City also tested our warning dissemination equipment through the Code Red Alert system, Fort Lauderdale TV, Radio 1610AM, press releases, blast e-mails, and social media.

Structural Projects

Swales:

The Water and Wastewater Division Right-of Way Maintenance has two swale crews that re-grade and sod utility right-of-ways throughout the City. The City has had an active swale program since 1999 that specifically addresses right of way maintenance. Swales are installed and maintained in accordance with the City of Fort Lauderdale ordinances 18-12, 26-145, 47-20-13, and 47-21-14.

The Public Works Department proactively installs swales at homeowner's addresses at no cost to the homeowner. The installation of swales enhances stormwater drainage and recharge of the surficial aquifer. It secondarily creates open space and provides for detention of stormwater. The program activities for the year August 2013 through July 2014 have created 40,742 square yards of swales.

Engineering Projects:

Phase I Projects completed during FY 13 (Oct 2013 – Oct 2014):

- 11780A - NE 16 St West of SR A1A –New Outfall Basin.
- 11780g- SW 13 St block between SW 8th and 9th Aves.
- 11780h- NE 23 St @ North Ocean Blvd.
- 11780n- NE 7 St & NE 20 Ave (Phase 2).
- 11780o- Belmar Street between Breakers Ave and West of A1A.
- 11780p- NE 30 Place at NE 26 St
- 11780v- Plaza Las Olas

Phase I Projects to be constructed by January 2015:

- 11780b-NE 20 Ave Between Sunrise Boulevard and NE 6 Ct with tidal valves.
- 11780k- SW 4 Ave at SW 5 Street
- 11780u– SE 11 Street East of Cordova Road.
- 11938 – NE 2 Street between NE 15 Ave and NE 16 Ave
- 12021- SE 11 Ct at Cordova Road

Activity 510
2014

- 12032- NE 15 Street East of Bayview Drive
- 12037- Royal Plaza Drive at Las Olas Blvd

Outreach Projects

The City of Fort Lauderdale conducted multiple citywide outreach projects over the past year to convey important flood protection information to key audiences, including: residents, local businesses and visitors. The outreach projects included information on the new Flood Insurance Rate Maps, instructions to obtain a flood zone determination, the importance of obtaining flood insurance, safety tips to protect neighbors and property from seasonal high tides and flood hazards, as well as information on additional resources.

To ensure broad distribution and saturation among multiple audiences, the information was provided in a variety of formats. A special informational flood insert was mailed Citywide in the utility bills in April and September 2014. Hard copies of brochures were distributed at public meetings; information was broadcast on our City radio station and posted on our public access TV channel; electronic materials were posted on the City website; safety tips and information were publicized through social media; and information was distributed to local media, businesses and City homeowner and condo associations through press releases, blast emails and City newsletters. In addition, the City mailed a letter and informational brochure to all repetitive loss properties. Staff also conducted a geographic analysis of the areas surrounding the repetitive loss properties and mailed a letter to more than 1,100 residences and business surrounding those properties to inform them of potential flood hazards and the availability of flood insurance.

Review of any delays to progress

Currently there are no delays to progress to report. The City will continue to be diligent and aware of operational constraints when it comes to project management and budget. The City will make those necessary changes when required to be aggressive in addressing floodplain management.

Recommendations for new projects or revised recommendations

The City has outlined three phases of projects to occur over a 10 year period. We are currently working in Phase I which will span 1-6 years and includes about 33 projects with a value of approximately \$7-10 million.