



PUBLIC SAFETY

COASTAL MANAGEMENT, COMMUNITY HEALTH AND SAFETY ELEMENT

INTENT

- Fort Lauderdale's coastal zone will continue to be one of the most active, vibrant and naturally beautiful areas within the City.
- While maintaining the unique character and qualities of the area, the City will plan for resiliency and continue to improve safety for all.
- This Element contains goals, objectives and policies that address development, economic growth and shoreline protection in the City's coastal areas.



GOALS AND POLICIES

GOAL 1: Protect and improve coastal resources important to ecologically-based economic drivers and environmental balance.

OBJECTIVE CM 1.1: Coastal Development and Shoreline Uses

Regulate development in coastal areas, paying special attention to its shoreline uses, and giving priority to water-dependent uses and water-related uses.

POLICY CM 1.1.1: The City shall limit the specific and cumulative impacts of development or redevelopment upon wetlands, water quality, water quantity, wildlife habitat, living marine resources and the beach dune system through the development review process.

POLICY CM 1.1.1a: When reviewing applications for shoreline development, the City shall ensure consideration of future water levels, based on the current Unified Sea Level Rise Projections, in redevelopment and development planning and design.

POLICY CM 1.1.1b: The City shall give priority to water dependent uses in zoning decisions affecting waterfront properties as applicable for commercial and recreational waterfront uses and water-dependent uses, including marinas and public access to waterways, as provided for under Florida statutes and Broward County land use plan.

POLICY CM 1.1.1c: The City shall require new developments to provide accessways in dune and coastal vegetation systems (based upon Florida DEP Best Management Practices) to discourage and reduce pedestrian disturbance to sensitive ecosystems.

POLICY CM 1.1.2: Development and redevelopment in the coastal area shall not degrade or destroy existing natural beaches or berm areas.

POLICY CM 1.1.3: The City shall continue to maintain, review and amend land development regulations which give priority to water-dependent and water related uses, especially in beach and marina communities.

POLICY CM 1.1.4: Preserve and enhance existing marinas in the City and enhance development standards for future marina siting and design which address: land use compatibility, availability of upland support services, existing protective status or ownership, hurricane contingency planning, protection of water quality, water depth, environmental disruptions, mitigation actions, availability for public use, economic need and feasibility.





POLICY CM 1.1.5: Land use priorities along and adjacent to the coastal shoreline shall be comparable with existing development and shall further the Central Beach Revitalization Plan.

POLICY CM 1.1.6: All development and redevelopment in coastal areas will address the protection of manatees, sea turtles, dune ecosystems, and other species and habitats of importance.

POLICY CM 1.1.7: The City shall coordinate and cooperate with Broward County to provide for the protection of marine habitats and water quality of its coastal waters, including the protection of natural and artificial reefs.



POLICY CM 1.1.7a: Facilities which service live-aboard boats shall provide for sewage pumping facilities and/or other improvements which promote environmental compatibility with marine resources consistent with local, state, and federal law.

OBJECTIVE CM 1.2: Coastal Plant and Animal Species

Protect and manage plant and animal species of significance.

POLICY CM 1.2.1: The City shall consider the climate adaptation needs of native plants and animal species, and consider strategies for assisting their natural migration.

POLICY CM 1.2.2: Protect turtles through Florida Statutes Chapter 370 and by the United States Endangered Species Act of 1973.

POLICY CM 1.2.2a: Continue to implement beachfront lighting requirements of the Unified Land Development Regulations (ULDR), which are consistent with Chapter 63B-55 (FAC) Model Ordinance for Marine Turtle Protection and Broward County Technical Report 97-06, Broward County Beach Lighting Management Plan, providing for sea turtle protection in a manner that is cost-feasible for the City and that incorporates the provisions of Crime Prevention through Environmental Design (CPTED).



POLICY CM 1.2.2b: Maintain the existing sea turtle hatchery in cooperation with the guidelines for local government implementation of sea turtle conservation programs.

POLICY CM 1.2.3: Where feasible, incorporate xeriscaping and native vegetation into projects on or adjacent to coastal resources, potentially via City general obligation bond projects.





POLICY CM 1.2.4: Continue to protect existing beach vegetation and encourage landscaping with native, salt tolerant trees, shrubs and ground cover as a means of mitigating the impacts of development and redevelopment on the beach system.



POLICY CM 1.2.5: For all City-owned beaches, the City shall plant, maintain and promote natural vegetation communities, appropriate for dune ecosystems in accordance with any and all local dune management plans, in order to promote natural dune growth and capture of wind-blown sand.

GOAL 2: Manage coastal areas to ensure public safety and to protect city investments and economic drivers.

OBJECTIVE CM 2.1: Public Safety, Wellbeing, and Investment

Strategically regulate and direct coastal development in the interest in public safety and for the protection of the public.

POLICY CM 2.1.1: The City will continue to regulate development, including infrastructure and other improvements that are publicly funded, in the coastal high hazard area.

POLICY CM 2.1.2: Development and redevelopment activities in the coastal high hazard area shall seek to protect and enhance the aesthetic and natural quality of the beaches for all.

POLICY CM 2.1.3: Protect public investments in areas vulnerable to natural disasters by constructing improvements that consider future conditions and asset life cycle costs, and in accordance with FDEP standards.

POLICY CM 2.1.4: The City shall limit public funding within the identified Coastal High Hazard Area unless infrastructure improvements are necessary to repair or update existing infrastructure or enhance hurricane evacuation clearance times or emergency shelter capacities, or to mitigate the effects of storm surge flooding or sea level rise.

POLICY CM 2.1.5: The City shall participate in the National Flood Insurance Program Community Rating System, and strive to continuously improve ranking status for the benefit of flood risk reduction and flood insurance premium reduction for policy holders.

OBJECTIVE CM 2.2: Climate Change Adaptation

Plan for, and adapt to climate change and its impacts (such as sea level rise) as a function of public safety and investment protection.

POLICY CM 2.2.1: Identify and assess the vulnerability climate change impacts pose to public facilities and services, including but not limited to water and wastewater facilities, stormwater systems, roads, bridges, governmental buildings, hospitals, and transit infrastructure.



POLICY CM 2.2.2: The City shall evaluate adaptation strategies for public infrastructure identified as vulnerable to climate-related impacts. Adaptation strategies may include, but are not limited to:

- a. Public Infrastructure Planning, Siting, Construction, Replacement, Operation and Maintenance
- b. Emergency Management
- c. Stormwater Management
- d. Land Development Regulations
- e. Building Codes
- f. Comprehensive Planning
- g. Utility Asset Management
- h. Other Strategies



POLICY CM 2.2.3: The City will take advantage of emerging data and technological opportunities based on evolving rising sea levels tidal data and associated flood related vulnerabilities, to allow for flexible adjustments and preserve future strategic adaptation implementation options to maintain maximum resiliency in response to new risks and vulnerabilities.

POLICY CM 2.2.4: Rise in sea level projections, as defined by the Southeast Florida Regional Climate Change Compact in the latest Unified Sea Level Rise Projection, shall be considered in all future decisions about the siting, design and building of public infrastructure including avoiding new construction in high hazard coastal areas, where applicable.

POLICY CM 2.2.5: To improve resiliency and address impacts of sea level rise, the City shall evaluate revising its code to permit a maximum freeboard requirement without penalty for building height in order to allow flexible adaptability of ground level uses.

OBJECTIVE CM 2.3: Adaptation Action Areas (AAAs)

Continue to identify and appropriately invest in vulnerable areas through the designation of Adaptation Action Areas (AAAs).

POLICY CM 2.3.1: As a basis for the designation of AAAs, the City will utilize the best available data and resources, such as the Unified Sea Level Rise Projection for Southeast Florida and Broward County’s Priority Planning Areas for Sea Level Rise Map, in order to identify and understand the risks, vulnerabilities and opportunities to develop and implement timely and effective adaptation strategies.

POLICY CM 2.3.2: As deemed to be in the best interest of the City, the City Commission may designate or remove the designation of an AAA by means of:

- a. Comprehensive Plan via location description or map, and in accordance with applicable Florida Statutes
- b. City Commission Resolution or Ordinance
- c. Community Investment Program (Capital Improvement Plan)
- d. Other mechanisms, as appropriate



POLICY CM 2.3.3: The City will consider the following criterion, in addition to others, for AAA designation:

- a. Areas experiencing (or are projected to experience) tidal flooding, storm surge flooding, or both
- b. Areas which have hydrological connection to coastal waters
- c. Locations within areas designated as evacuation zones for storm surge
- d. Other areas impacted by stormwater/flood control issues
- e. Areas below, at, or near mean higher high water



POLICY CM 2.3.4: Integrate AAAs into existing and future City processes and city-wide plans and documents, such as:

- a. Community Investment Program
- b. Local Mitigation Strategy
- c. Strategic Plan
- d. Sustainability Action Plan
- e. Stormwater Master Plan
- f. Comprehensive Emergency Management Plan
- g. Unified Land Development Regulations
- h. Other related processes, plans and documents

POLICY CM 2.3.5: The City will recognize that an AAA's adaptation strategy options may include:

- a. Protection
- b. Accommodation
- c. Managed Retreat
- d. Avoidance
- e. Other Options

POLICY CM 2.3.6: When necessary, the City shall seek funding for the implementation of AAA's associated adaptation strategies from the following types of sources:

- a. Federal and State grants and technical expertise assistance (in-kind)
- b. Local Stormwater Utility Fees and Community Investment Program (Capital Improvement Plan) prioritization
- c. Public/Private Partnerships
- d. Other Sources



GOAL 3: Prepare and guide coastal areas, residents, and resources before, during and after hazard and emergency events.

OBJECTIVE CM 3.1: Prepare for Emergency and Disaster Events

The City shall ensure that appropriate measures are implemented and enforced in order to prepare for emergency and disaster events.

POLICY CM 3.1.1: The City will continue to enforce Florida Building Code and other measures, including flood management measures as set forth in 44 C.F.R. part 60, to reduce exposure of life and property to the damaging effects of hurricanes and flooding.

POLICY CM 3.1.2: The vehicle trip cap contained in the Future Land Use Element, shall address roadway carrying capacity, particularly in the Central Beach Area.

POLICY CM 3.1.3: Development review in the coastal high hazard area shall consider significant impacts to evacuation routes, and shall require roadway improvements if deemed necessary.

POLICY CM 3.1.3a: The City shall work to ensure its evacuation routes system is in a state of good repair, with repair work on critical paths in the roadway network prioritized in its capital improvements program.

POLICY CM 3.1.4: Implement a Local Mitigation Plan to reduce or eliminate exposure of life and property to natural disasters. The plan includes an inventory of City hazard prone properties and which may result in the implementation of development regulations, such as setbacks provisions, and other site controls to reduce future property damages and losses.

POLICY CM 3.1.5: To reduce exposure to natural hazards, the City shall ensure that all new construction, reconstruction or additions to existing facilities, regardless of type, that are permitted within the 100-year flood zone are subject to the most stringent applicable flood damage protection regulations as set forth in 44 C.F.R. part 60.



POLICY CM 3.1.6: The City shall consider the impact of projected sea level rise on all public assets and natural resources located within coastal areas at an elevation of less than seven (7) feet of elevation in NAVD 88, at a minimum.

POLICY CM 3.1.7: The City will utilize Florida Building Code standards, at a minimum to ensure that new, reconstructed, and expanded health care facilities outside the storm surge areas are built to shelter specifications. Existing health care facilities should retrofit buildings to shelter specifications. Health care facilities outside the storm surge areas should establish aid agreements with similar facilities within the storm surge areas.



OBJECTIVE CM 3.2: Respond During Emergency and Disaster Events

The City shall ensure that appropriate measures are implemented and enforced in order to respond to emergency and disaster events.

POLICY CM 3.2.1: The City shall maintain procedures and periodically review and update its policies related to emergency management and provisions for declarations of states of emergency and subsequent actions.

POLICY CM 3.2.2: The City shall maintain policies for an emergency operations center, including for readiness training and designation of staff, in coordination with regional authorities.

OBJECTIVE CM 3.3: Recover After Emergency and Disaster Events

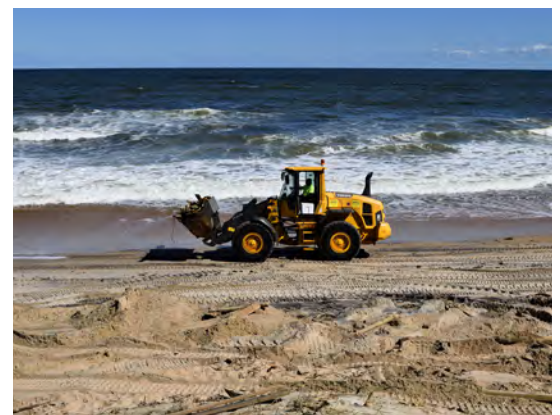
The City shall ensure that appropriate measures are implemented to recover after emergency and disaster events.

POLICY CM 3.3.1: Post disaster response and redevelopment plans should distinguish between immediate repair and cleanup actions needed to protect public health, and safety and long-term repair and redevelopment activities.

POLICY CM 3.3.2: Implement the City's hurricane plan, including debris clearance, immediate repairs and replacement of public infrastructure needed to protect public health and safety.

POLICY CM 3.3.3: Future land use designations shall be reviewed following a major hurricane event or other natural event involving a declaration of state of emergency. The City shall severely limit redevelopment in areas of repetitive loss areas.

POLICY CM 3.3.4: City infrastructure damaged by storms intended to be repaired or replaced in its current location shall be built to a higher standard, or relocated.



POLICY CM 3.3.4a: The City shall discourage public expenditures that subsidize the reconstruction or repair of existing development destroyed by a natural disaster in the coastal high hazard and floodplain areas.

POLICY CM 3.3.5: Long-term redevelopment following a major hurricane event shall be conducted in accordance with FDEP standards.

POLICY CM 3.3.6: The City shall limit redevelopment in areas damaged by climate related hazards, through ensuring that any structure not compliant with required base flood elevations or that are substantially damaged (based on the definition in Chapter 161, F.S.) or abandoned, shall be rebuilt only to the extent that complies with the current floodplain management standards for the affected property.

POLICY CM 3.3.7: Deficiencies in hurricane evacuation times or facilities that arise in the future shall be analyzed, identified, planned for, and reflected by amendments to this element.



GOAL 4: Coordinate with related partners and agencies (at city, local, county, regional, state, and federal levels) to plan for disaster and emergency management, further the resiliency of coastal area, and ensure city-wide community health and public safety.

OBJECTIVE CM 4.1: Coordination for Emergencies and Disaster Events

In the interest of public safety, the City shall follow protocols and coordinate with appropriate agencies before, during, and after emergencies and disaster events.

POLICY CM 4.1.1: The City should coordinate with Broward County to ensure that shelter spaces are reserved for patients in health care facilities located within the storm surge areas, at health care facilities located outside of the evacuation zones and designated as receiver facilities. Health care facilities are to be responsible for evacuating their own patients or to provide on-site enhanced protection areas for them.

POLICY CM 4.1.2: The City should coordinate with Broward County to prepare an inventory for special needs populations, and designate special shelter(s) to accommodate their needs. Additionally, an outreach and communications program should be established to assist the special needs populations in evacuation and sheltering.

POLICY CM 4.1.3: Provide input for inclusion to the Broward County Hurricane Evacuation Plan (CHEP) on development and redevelopment to enhance the protection of Fort Lauderdale citizens through the Emergency Coordinating Council.

POLICY CM 4.1.4: Coordinate efforts with Broward County to relieve deficiencies identified in the hurricane evacuation analysis, align with the LMS Plan and ensure that there are sufficient and appropriate personnel assigned to implement and expedite the County's evacuation plan.

POLICY CM 4.1.5: Participate in the review of Broward County Comprehensive Emergency Operations Plan and the CHEP-to ensure that revisions are made as needed to reflect new techniques or programs that accelerate evacuation.



POLICY CM 4.1.6: Continue and participate in regular meetings of local and regional evacuation planning professionals.

POLICY CM 4.1.7: Continue to provide data to the County from police and fire departments regarding evacuation needs of transit dependent and vulnerable populations including mobile home park residents within the City.

POLICY CM 4.1.8: Participate in the preparation and adoption of a county-wide post disaster redevelopment plan which establishes an orderly process for reviewing private and public redevelopment proposals to restore the economic and social viability of the City in a timely fashion. Post-disaster redevelopment should address the removal, relocation, or structural modification of damaged structures and infrastructure as determined appropriate and be consistent with federal funding provisions and unsafe structures.



OBJECTIVE CM 4.2: Coordinate to Address Climate Change and Hazards

In order to reduce vulnerability and increase resiliency, the City shall foster partnerships and coordinate with respective agencies in order to proactively and reactively address the issues of climate change and other relevant coastal risks and hazards.

POLICY CM 4.2.1: The City shall align and be consistent with, to the extent possible, relevant and current national, state, and regional adaptation strategy documents, such as Broward County Climate Action Plan, Southeast Florida Regional Climate Action Plan, and the President's Climate Action Plan, as well as others.

POLICY CM 4.2.2: The City shall be diligent in coordinating with FEMA and Broward County to receive the most up to date information regarding the current floodplain boundaries.

POLICY CM 4.2.3: Continue to foster effective collaborations, partnerships (including P3), and coordination with national, state, regional, and local partners to identify risks, vulnerabilities, and opportunities associated with coastal hazards and the impacts from sea level rise.

POLICY CM 4.2.4: The City will continue to coordinate efforts to assess existing and projected regional conditions related to climate change and sea level rise, with other governmental and non-governmental agencies in the Southeast Florida region, and collaborate to develop actionable strategies appropriate to the region.

OBJECTIVE CM 4.3: Coordinate for Coastal Environmental Issues and Regulatory Consistency

The City shall utilize partnerships and coordinate with appropriate agencies for coastal environmental issues and regulatory consistency.

POLICY CM 4.3.1: Assist county and state agencies in the enforcement and monitoring of compliance with the Florida Department of Environmental (DEP) Coastal Construction Control Line regulations as provided for by 163.3178(2), F.S.

POLICY CM 4.3.2: Coordinate efforts with Broward County and existing resource protection plans of the City and other agencies to ensure adequate sites for water-dependent uses, prevent estuarine pollution, control surface water runoff, protect marine resources, reduce exposure to natural hazards, and ensure equitable public access.

POLICY CM 4.3.3: The City shall continue to coordinate and cooperate with applicable state and federal agencies for all beach nourishment projects within the City to maintain ecological, economic, and shoreline protection functions.

POLICY CM 4.3.4: Apply for state and other funding through the DEP to plan for and enhance the coastal dunes, with particular focus on the south end of the Central Beach north to Alexander Park.





POLICY CM 4.3.5: Work with the Broward County Soil and Water Conservation District to appropriately vegetate and maintain dune systems, with particular focus on the south end of the Central Beach north to Alexander Park.

POLICY CM 4.3.6: Participate in studies affecting natural resources located in or adjacent to the City, through intergovernmental coordination mechanisms.

POLICY CM 4.3.7: The City shall coordinate and cooperate with Broward County in the County's development of a comprehensive beach management and maintenance plan to address activities including dune and vegetation management, beach nourishment, and sand bypassing. The plan shall include consideration of climate change impacts on these efforts.

OBJECTIVE CM 4.4: Deepwater Port

The City of Fort Lauderdale shall work with Broward County in a cooperative fashion to resolve inconsistencies which may arise between the City of Fort Lauderdale Comprehensive Plan and the Deepwater Port Component of the Broward County Comprehensive Plan.

POLICY CM 4.4.1: Ensure that areas within Port Everglades are consistent with priorities identified within the Deepwater Port Component of the Broward NEXT Comprehensive Plan.

POLICY CM 4.4.2: In the event the City of Fort Lauderdale and Broward County are unable to resolve an inconsistency between the Port and City Plans, the City may, subject to and in accordance with all applicable law, utilize the dispute resolution process as provided under s. 186.509, Florida Statutes.





OBJECTIVE CM 4.5: Community Health and Safety

Ensure local standards and proactive measures to enhance community health and safety in the City of Fort Lauderdale.

POLICY CM 4.5.1: The City shall strive to meet the national standards for emergency response times for Emergency Medical Service (EMS) calls. The City shall regularly evaluate and determine the need for new EMS sites and operational improvements in order to effect better response times.

POLICY CM 4.5.2: The City shall strive to meet the national standards for emergency response times for fire calls. The City shall regularly evaluate and determine the need for new City fire station sites based on the use of fire service jurisdiction assessment and fire data analysis software in order to effect better response times.



POLICY CM 4.5.3: The City shall maintain department standards based on best practices and national standards, and strive to meet department standards for police Priority One calls.

POLICY CM 4.5.4: Respond to and prepare for continued increases in emergent and non-emergent medical responses, with consideration to medical, social work, mental health services, aging population, new senior living facilities, and the evolving socio-economic quality of the neighborhoods.

POLICY CM 4.5.4a: The City shall maintain a state of readiness to respond to public health crises through continued coordination with the Florida Department of Health, Broward County Department of Health and local hospital and medical systems, among others as applicable. To maintain this state of readiness, the City shall also monitor available resources and information in cases of public health emergency, including from entities such as the Center for Disease Control, for usage in development of crisis response and operational policies.

POLICY CM 4.5.4b: The City shall maintain demographic, business data, and GIS support systems to ensure that the city's response is data-informed and based on the city's values and principles around equity. This City will utilize this data as necessary to help target event impact mitigation actions that will direct efforts to obtain external assistance, provide for locations for temporary hospitals and other critical infrastructure, assist vulnerable populations, help with identifying business stabilization assistance and food distribution, and aid in long term planning for post event recovery.

POLICY CM 4.5.5: Direct resources to training, education, and prevention programs that encourage residents to be proactive regarding personal property and share responsibility for community safety.

POLICY CM 4.5.6: Evaluate new technological advances and programs to modernize public safety efforts and provide efficient and effective services in the most cost-effective manner.