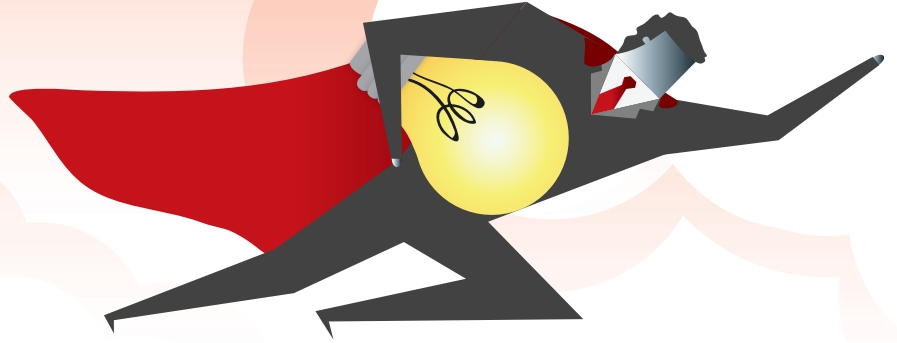




CITY OF FORT LAUDERDALE
BEAMs
BUSINESS ENGAGEMENT
ASSISTANCE & MENTORSHIPS

UNLEASH YOUR BUSINESS POWER

BUSINESS ACADEMY



LEARN HOW TO:

- ▶ Expand your vision, generate a competitive advantage and recognize opportunities
- ▶ Access Capital Markets
- ▶ Effective sales and marketing strategies

CERTIFICATIONS PROGRAM

BUILD ON SUCCESS

APRIL 12

What is your competitive advantage?

APRIL 19

What are your opportunities?

APRIL 26

How to capitalize on your opportunities

MAY 3

BIZ Talk: Taking Business to the Next Level

TIME: 6:00 to 8:30 PM

LOCATION:

Greater Fort Lauderdale Chamber of Commerce
512 NE 3rd Avenue, Fort Lauderdale, FL 33301

APPLY HERE: www.fortlauderdale.gov/beams



BUSINESS ENGAGEMENT

Connecting with business owners through site visits. During face-to-face conversations ECI is introduced as the City's point of contact. We are here to learn about the goals and aspirations of our local businesses and to be an advocate for their success.



BUSINESS ASSISTANCE

Fostering job creation and supporting the growth of new and existing businesses through the Business Academy's three certification programs. We are here to educate and connect business owners with other agencies and organizations that are able to support their needs.



BUSINESS MENTORSHIPS

Facilitating personalized assistance between business owners and experts in various fields in order to enhance business growth.



INTERNATIONAL MARKET EXPANSION

Assisting Fort Lauderdale businesses to become a part of the global import/export community by helping them to make the necessary international connections. We are here to elevate Fort Lauderdale's role as a robust hub for international commerce and a world-class business destination.

Department of Sustainable Development | Economic and Community Investment Division
700 NW 19th Avenue, Fort Lauderdale, FL 33311

Phone (954)-828-5130 | Email economicdevelopment@fortlauderdale.gov | Visit www.fortlauderdale.gov/beams