

PARKING AND DELIVERY EVALUATION

LAS OLAS BOULEVARD
FROM SE 3RD AVE TO SE 17TH AVE

PREPARED FOR: CITY OF FORT LAUDERDALE
TRANSPORTATION AND MOBILITY DEPARTMENT

PREPARED BY: TINDALE OLIVER



OCTOBER 2017



CITY OF FORT LAUDERDALE



Introduction

The City of Fort Lauderdale is deploying a trial “right-sizing” concept for a section of Las Olas Boulevard between SE 15th Avenue and SW 11th Avenue that will repurpose one general-purpose travel lane in each direction to provide space for bicycle and pedestrian facilities. Currently, there are no loading zones along this section of Las Olas Boulevard, and delivery vehicles, although encouraged to use cross-streets and alleys, often stop in the outside travel lane along Las Olas to make deliveries. The stops in the travel lane create only a minor disruption in traffic, as there is a second travel lane for through vehicles. However if the trial is successful and the number of travel lanes along Las Olas are permanently reduced from four to two, use of the travel lanes for deliveries and/or valet/taxi activity is likely to significantly disrupt traffic flow.

To address this concern, in conjunction with the evaluation of the trial right-sizing implementation, the City requested this study to review loading and unloading characteristics within the study area and make recommendations to ensure that vehicles will not block travel lanes in the future. Since one solution is to establish loading zones, valet/taxi areas, and possibly bus bays within current on-street parking areas, the study also evaluated on-street and off-street parking utilization to understand the potential impacts of using parking spaces for other needs.

To conduct this study, Las Olas Boulevard was divided into three sections. The primary section, and the predominant focus of this analysis, is SE 6th Avenue to SE 16th Avenue. Review and consideration also were given to the western section of SE 3rd Avenue to SE 6th Avenue and the eastern section of SE 16th Avenue to SE 17th Avenue. The three study areas and the trial project area are shown in Figure 1.

Key elements of the study include the following:

- Conduct a parking inventory and utilization study along Las Olas Boulevard from SE 6th Avenue to SE 16th Avenue between SE 4th Street and SE 2nd Court, including on-street and off-street parking during various times of day.
- Survey business managers along Las Olas Boulevard regarding delivery locations, time of day, and frequency. Also, evaluate frequency and stopping location of public transit and curbside valet activity, which is prohibited by the City.
- Perform a visual inspection and cursory review of the eastern and western segments of the study area to incorporate into potential long-term strategies.

Figure 1: Study Area

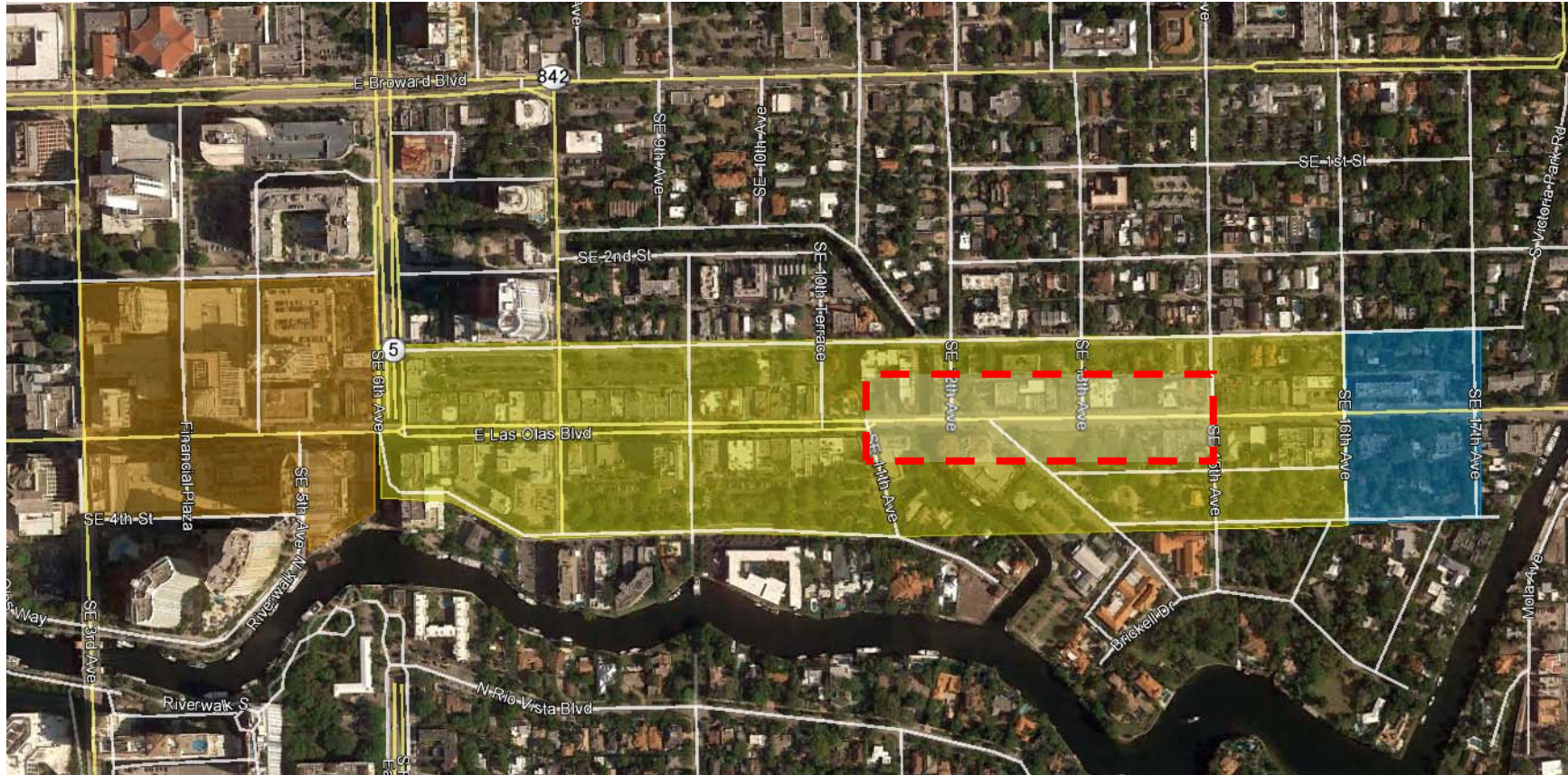






Image source: Google Earth Pro

Legend:

-  Western Section
-  Primary Section
-  Eastern Section
-  Trial "Right-sizing" Area

Parking Analysis

To develop a picture of the current parking utilization in the Las Olas area, on-street and publically-accessible off-street parking spots were inventoried, and sample counts were taken of the parking utilization (occupied vs. total spots) for all parking areas bounded by SE 6th Avenue, SE 2nd Court, SE 16th Avenue, and SE 4th Street, including side streets and along Las Olas Boulevard.

The parking areas were divided into five main categories:

- Public paid parking
- Public free parking
- Private (for public use) paid parking
- Private (permit or customers only) parking
- Valet parking

These samples were taken during the AM, midday, and PM peak periods on Wednesday, April 19, and Thursday, April 20, 2017, and during the evening peak period on Saturday, April 29, 2017. These time periods are representative of the “shoulder” season for Fort Lauderdale and, as such, represent a “high-average” for overall activity in the area than a peak or low-season load. The data are summarized in Tables 1 and 2, and detailed data and exhibits are provided in Appendix A.

Within the parking analysis area of SE 6th Avenue to SE 16th Avenue are an estimated 2,359 parking spots. Of those spots, 157 are along Las Olas Boulevard, with 49 (between SE 11th Avenue and SE 16th Avenue) available throughout the day and 108 (west of SE 11th Avenue) available only after 11:00 AM on weekdays.

In the western section of the study area between SE 3rd Avenue and SE 6th Avenue are an estimated 70 additional parking spots available after 11:00 AM. From SE 16th Ave to SE 17th Avenue are an additional 12 parking spots that are available during all time periods.

As shown in Tables 1 and 2, the highest overall average parking utilization occurs during the weekday midday period (52%), followed by weekend evening (48%) and weekday evening (41%). During the AM peak, when accounting for the parking restrictions along Las Olas Boulevard, an average of 16% of the total *available* parking is being used.

For the on-street parking along Las Olas Boulevard, the highest overall average parking utilization occurs during the weekend evening period (90%), followed by weekday evening (63%) and weekday midday (62%). During the AM peak, an average of 16% of the total parking between SE 11th Avenue and SE 16th Avenue is being utilized.

A review of the parking within the “trial project area” east of 11th Avenue to SE 16th Avenue reveals that, of the estimated 49 on-street parking spaces along Las Olas Boulevard between SE 11th Avenue and SE 16th Avenue, 5–11 were occupied during the field observations (average 16%). During midday, 26–38 were occupied (average 65%); during the PM peak, 31–33 were occupied (average 65%); on Saturday night, 44 were occupied (90%).

This inventory analysis indicates that although there is some availability of parking through most periods of the day, the AM peak was when the most abundant supply of unused parking was observed within the study area and along Las Olas Boulevard.

Given the availability of parking during most analyzed periods, consideration should be given to re-designating existing parking spaces during specific times of day to other activity (i.e., designated loading and unloading).

This analysis also indicates that additional parking within the study area is not anticipated to be required to adequately service the existing businesses and customer base.

Las Olas Boulevard Parking and Delivery Evaluation

Table 1: Parking Occupancy by Parking Type

Parking Type	Inventory	Wednesday AM		Thursday AM		Wednesday Midday		Thursday Midday		Wednesday PM		Thursday PM		Saturday Night	
		Parked Cars	Occupancy	Parked Cars	Occupancy	Parked Cars	Occupancy	Parked Cars	Occupancy	Parked Cars	Occupancy	Parked Cars	Occupancy	Parked Cars	Occupancy
Public (Paid Parking)															
on-street	239	17	13%	22	17%	174	73%	138	58%	157	66%	140	59%	209	87%
<i>on-street Las Olas only</i>	157	5	10%	11	22%	111	71%	83	53%	94	60%	103	66%	141	90%
off-street	249	8	3%	47	19%	126	51%	129	52%	110	44%	94	38%	155	62%
Public (Free Parking)															
on-street	52	12	23%	31	60%	30	58%	44	85%	30	58%	44	85%	45	87%
Private for Public (Paid)															
off-street	500	10	2%	48	10%	249	50%	249	50%	206	41%	157	31%	195	39%
garage	291	16	5%	24	8%	117	40%	96	33%	102	35%	55	19%	60	21%
Private (Permit or Customer Only)															
off-street	619	85	14%	140	23%	360	58%	331	53%	185	30%	254	41%	251	41%
garage	251	64	25%	101	40%	124	49%	163	65%	149	59%	116	46%	92	37%
Valet	158	64	41%	64	41%	62	39%	70	44%	85	54%	52	33%	121	77%
TOTAL AREA PARKING	2359	276	12%	477	21%	1242	53%	1220	52%	1024	43%	912	39%	1128	48%

Note: During AM peak hour, only 49 spaces available along Las Olas Boulevard, as on-street parking west of 11th Ave is designated as travel lane from 3:00–11:00 AM; table reflects time of day availability.

Table 2: Average Parking Occupancy

Parking Type	Inventory	AM - Average		Midday - Average		PM - Average		Saturday Night	
		Cars Parked	Occupancy	Cars Parked	Occupancy	Cars Parked	Occupancy	Cars Parked	Occupancy
On-Street	291	41	14%	193	66%	185.5	64%	254	87%
Off-Street - Surface	1368	169	12%	722	53%	503	37%	601	44%
Garage	542	102.5	19%	250	46%	211	39%	152	28%
Valet	158	64	41%	66	42%	68.5	43%	121	77%
Total	2359	376.5	16%	1231	52%	968	41%	1128	48%

Las Olas Boulevard Parking and Delivery Evaluation

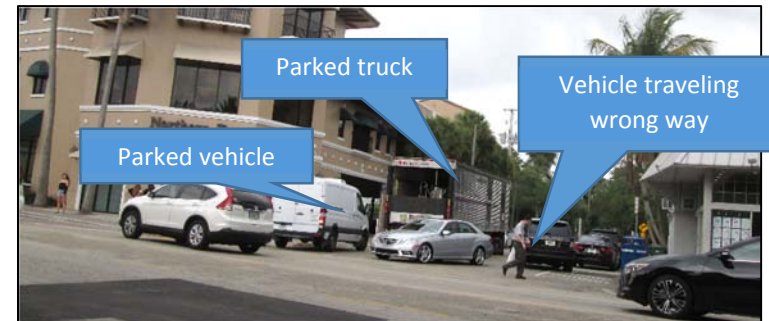
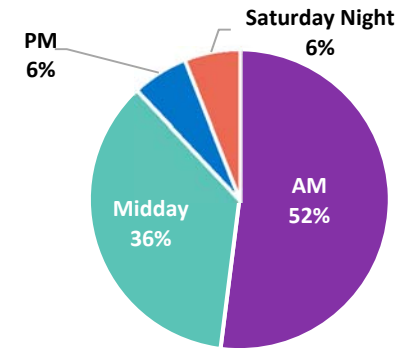
Loading and Unloading Activity

During the field reviews between SE 6th Avenue and SE 16th Avenue, observations were made to document the patterns of delivery vehicles within the area. Although this review was not comprehensive, it served to identify locations with high loading and unloading activity along Las Olas Boulevard, in particular, and the study area in general. Business owners were surveyed for input on loading and unloading activity; the data are summarized in a later section.

Figure 2 summarizes the overall observations of loading and unloading activity; exhibits of the observations are presented in Appendix B. Figure 3 includes taxi and ridesourcing companies. As shown in Figure 2, the majority of loading and unloading activity occurred during the AM peak period (72%), with moderate activity during the midday (20%). Minor activity was observed during weekday PM peak periods and on Saturday evening.

Field reviews confirm that the alleys behind businesses along Las Olas Boulevard are not consistently wide enough to accommodate heavy vehicles. Documented field observations reveal that much of the loading and unloading activity takes place on-street and in designated on-street parking spaces, travel lanes, sidewalks, and private and public off-street parking lots. Loading and unloading activity along the north/south streets, occurring within travel or turn lanes, often resulted in conflicting vehicular movements.

Figure 2: Loading and Unloading Observations by Time of Day



Conflicting traffic due to loading and unloading activity on SE 11th Avenue and Las Olas Boulevard



Vehicle maneuvering around truck parked in travel lane of SE 9th Avenue

Las Olas Boulevard Parking and Delivery Evaluation

A review of field observations demonstrates that although loading and unloading did occur throughout the study area, activity generally was concentrated in the following areas:

- Along Las Olas Boulevard at SE 11th Avenue
- Along SE 8th Avenue north of Las Olas Boulevard
- Within the City of Fort Lauderdale’s Nautical Lot on SE 4th Street and SE 9th Avenue
- Along SE 9th Avenue south of Las Olas Boulevard
- Along westbound Las Olas Boulevard at the Fort Lauderdale Hospital entrance

During the field reviews, the locations of existing loading and unloading zones also were reviewed. These zones are illustrated in Appendix B and are as follows:

- Along westbound Las Olas Boulevard west of SE 13th Street in front of Grand Forno Bakery
- West of SE 9th Avenue south of Las Olas Boulevard in the alley behind 888 East Las Olas Boulevard (building loading and unloading only)
- Along westbound Las Olas Boulevard west of SE 16th Street between 1521 E Las Olas Boulevard and 7-Eleven.
- Under parking structure south of Las Olas Boulevard behind Riverside Hotel



Loading zone between 1521 E Las Olas Boulevard and 7-Eleven

As is discussed in the conclusions, with the lane reduction, some parking spaces should be dedicated to loading/unloading, especially prior to the midday peak.

Taxi and Rideshare Operation

There is one existing taxi stand within the study limits, located along southbound SE 9th Avenue north of Las Olas Boulevard. During field reviews, taxis were observed loading and unloading outside of this location.

Currently, there are no restrictions (i.e., designated pick up locations) in place for rideshare companies.

Las Olas Boulevard Parking and Delivery Evaluation



Uber vehicle dropping off passenger on Las Olas Boulevard

Waste Collection

A meeting was held on May 16, 2017, with Melissa Doyle and Dr. Nancy Gassman of the City's Solid Waste and Recycling Program to discuss the existing operation of waste collection within the study area. Meeting notes are provided in Appendix C and the following summarizes key items from this meeting:

- The City of Fort Lauderdale is served by approximately 12 private waste collection companies.
- Businesses contract directly with the companies.
- Within the study area, waste collection is served on side streets, along back alleys, and curbside along Las Olas Boulevard. Alley collection is minimal, as the narrow and often obstructed alleys create obstacles for the collection vehicles.
- Many businesses do not have access to the back alleys, which makes transporting waste to locations off of Las Olas Boulevard burdensome.
- The majority of waste collection occurs early in the morning. This is likely to avoid higher traffic volumes that

occur other times of the day along Las Olas Boulevard and also to avoid pedestrian conflicts on the sidewalks.

Based on the information above, it is estimated that modifications to waste collection services are not likely to be impacted by the trial project. However, longer-term solutions could alleviate the impacts of waste collection along Las Olas Boulevard.

BCT and Sun Trolley

Sun Trolley has a “wave and ride” flag stop policy that allows riders to wave down a Sun Trolley, which will stop on demand.

The Sun Trolley Master Transit Plan, completed January 2017, recommended that Sun Trolley implement a fixed bus stop infrastructure within the next 10 years to provide safe and convenient locations for passengers to board and alight Sun Trolley vehicles. In addition, fixed bus stops would provide increased visibility for Sun Trolley.



Shared bus stop in Downtown Orlando

Sun Trolley and BCT currently operate along Las Olas Boulevard.

Within the study area are 14 BCT stops located along Las Olas Boulevard, as illustrated in Figure 3. It is recommended that Sun Trolley consolidate with the existing BCT stops along its routes. This would apply to the routes within the study area as well.

Shifting from the current “wave and ride” flag stop policy to a fixed bus infrastructure will require financial sources and approval and support from BCT and Broward County, as Sun Trolley bus stop signs need to be added to the existing BCT bus stop infrastructure.

Figure 3: BCT Bus Stop Locations along Las Olas Boulevard



Survey Results

The Las Olas Company assisted the City by distributing a survey to property owners and tenants along Las Olas Boulevard to obtain additional information on loading and unloading activity. In total, 24 responses were completed, with the key results summarized in Figures 4 through 8. The majority of respondents indicated that they received deliveries a few times per week or daily between 9:00 AM and 4:00 PM. Responses about where delivery drivers typically park when making deliveries varied, with most indicating behind the

business. Most deliveries take 0–5 minutes to make. The survey and detailed results are provided in Appendix D.

The survey responses regarding the time at which deliveries typically are received were similar to field observations, with the majority taking place before 12:00 noon. The most frequent times for deliveries indicated by survey respondents was 9:00 AM–12:00 noon and 7:00–9:00 AM, accounting for 56% and 35% of responses, respectively, compared to 36% and 36% observed during the same time periods.

Figure 4: How often do you receive deliveries on Las Olas Boulevard?

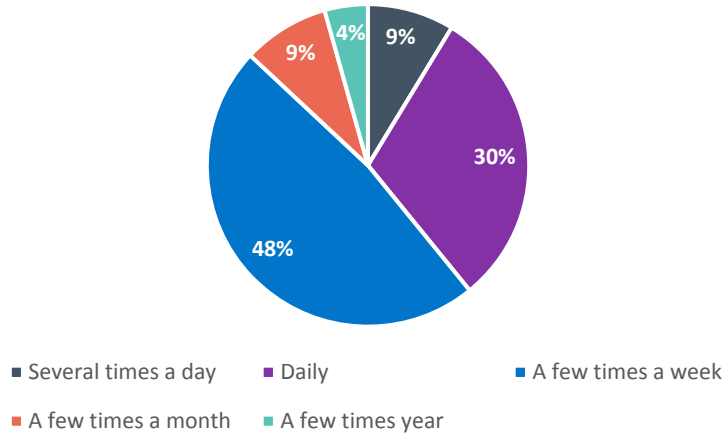
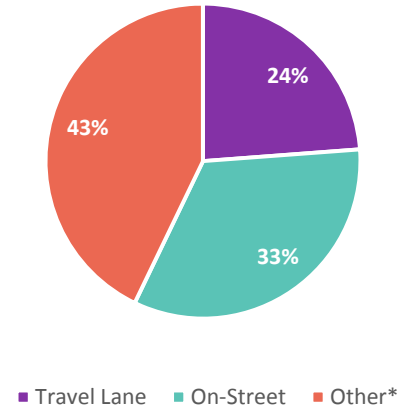


Figure 6: Where do delivery drivers typically park when they make deliveries to your business?



**Most "other" indicated "behind the business"*

Figure 5: What time(s) do you typically receive deliveries? (check all that apply)

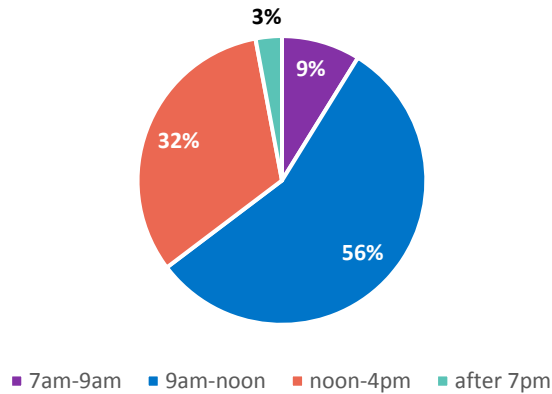
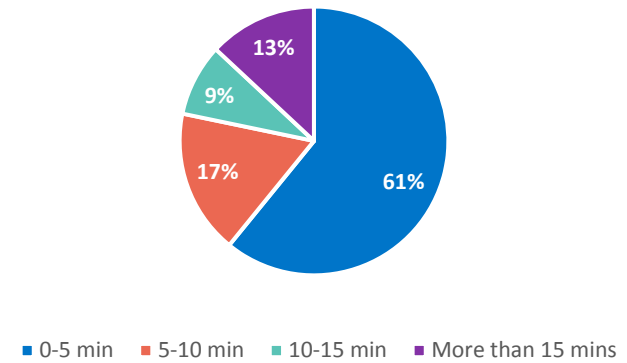
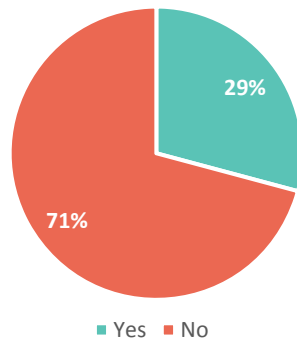


Figure 7: How long does it typically take to make a delivery to a business on Las Olas Boulevard?



Las Olas Boulevard Parking and Delivery Evaluation

Figure 8: Does your company receive waste collection services on Las Olas Boulevard?



Findings and Strategies

It is desirable to create a walkable environment along Las Olas Boulevard by minimizing the presence and impact of heavy vehicles, but this must be balanced with the needs of local businesses and visitors as it pertains to loading and unloading, taxi/rideshare, parking, and traffic.

Strategies were reviewed for the short term and longer term. Short-term strategies generally can be implemented with the City's trial project between SE 11th Avenue and SE 16th Avenue. Longer-term strategies are those that would be considered with an ultimate determination on the character of the study area as a whole and would likely require construction improvements, policy changes, and neighbor coordination.

An initial short-term strategy considered relocating all (or a majority) of loading and unloading activity and waste collection to the alleys between Las Olas Boulevard and SE 2nd Court and between Las Olas Boulevard and SE 4th Street. However, after field

reviews and discussions with Waste Collection Department personnel, it was determined this currently is not feasible. The alleys are very narrow and, in many locations, have vertical obstructions such as light poles that would make them impassable by large vehicles. During field reviews, vehicles also were observed parking in and obstructing the alleys.

A second obstacle to alley access is that many of the businesses along Las Olas Boulevard do not have access through the business to the alleys. This would make waste management and delivery operation challenging and tedious. As such, the following short- and long-term strategies were developed for consideration along Las Olas Boulevard.



Typical alley conditions—behind Chico's and Sunglasses Hut facing east



Parked delivery van on narrow alley.



Parked delivery truck blocking alley and off-street parking spaces.

Short-term

Short-Term Strategy 1: Provide on-street, designated loading zones by time of day.

The alley behind the businesses has limited ability for use due to its narrow width. This makes the alley, in the current configuration, difficult or impassable for large trucks. Based on the limited ability to use alley access for deliveries, waste collection, and other purposes, it was determined that, in the short-term, waste collection and loading/unloading activity would need to continue along Las Olas Boulevard.

As it pertains to the trial project and priority study section, during the morning (i.e., prior to 11:00 AM), along Las Olas Boulevard between SE 11th Avenue and SE 16th Avenue there is significant unused parking capacity, thus allowing for accommodation of designated loading and unloading zones within the area. Based on field observations, it is recommended to maintain the existing loading and unloading zones and consider providing additional loading and unloading zones westbound and eastbound along Las Olas Boulevard west of SE 11th Avenue. An advantage to these locations is that there are existing crosswalks in the vicinity that delivery drivers could use to traverse Las Olas Boulevard. The proposed zones are shown in Figure 9.

As Las Olas Boulevard currently is a 4-lane roadway west of SE 11th Avenue, no designated zones could be accommodated within the existing cross-section during the morning. However, if the lanes are reallocated to one in each direction, additional time-of-day loading and unloading could be provided.

To accommodate deliveries outside the morning, consideration should be given to reviewing the cross-section of SE 8th Avenue, SE 9th Avenue, and SE 10th Terrace to determine if excess horizontal

Las Olas Boulevard Parking and Delivery Evaluation

section exists that would allow for designated loading and unloading areas which could also be designated by time of day

A secondary strategy to accommodate loading and unloading activity in the midday and afternoon periods is enforcement of stopping/standing and parking along Las Olas Boulevard to require deliveries to occur in off-street and private parking lots off SE 2nd Court and SE 4th Street.

Figure 9: Proposed Loading and Unloading Zones



Short-Term Strategy 2: Taxi and Rideshare

The only dedicated taxi stand in the study area is along SE 9th Avenue north of Las Olas Boulevard. To facilitate pickups and minimize impacts to traffic, additional taxi/rideshare stands could be considered. These locations could be shared with designated

loading and unloading areas by time of day. The anticipated loading and unloading activity and taxi activity are not likely to share the same time-of-day periods. As such, designating loading and unloading zones discussed previously should be considered as shared taxi and rideshare locations after the AM peak hour. This will simplify signing/markings since these spaces will always be for special uses rather than normal paid parking.

Also, as with loading and unloading considerations, a detailed review of side-street cross-sections could reveal available area not designated for parking that could be used.

Depending on the impacts on supply, the designated AM loading zones also could be designated as taxi/rideshare zones outside the AM peak hour. This would need to be developed to ensure that overall parking supply is not reduced, as City policy is not to reduce the city-wide parking supply.

The City should coordinate with ridesharing companies such as Uber and Lyft so drivers can pick up passengers in these “pickup zones.” Rideshare contacts for this coordination are as follows:

- [Rachel Johnson](#), Community Engagement Manager, Uber Florida, rachelj@uber.com, (407) 701-4357
- [Salomon Horowitz](#), Operations Manager, Lyft Florida, sahorowitz@lyft.com, (786) 569-9115

Short-Term Strategy 3: Education and Enforcement

With any of the strategies discussed above, the City must gain the cooperation of business owners, law enforcement, and parking enforcement so both the City and business owners can benefit from improved traffic flows while creating a more pleasant and walkable environment for visitors. Business owners should contractually obligate delivery services to abide by the designations and time-of-

day restrictions. Law enforcement and parking enforcement must be active in enforcing the restrictions to encourage proper behavior.

Long-term Strategies

Long-term Strategy 1: Stripe On-Street Parking Locations

It was noted during field reviews that the on-street parking along Las Olas Boulevard is inconsistently used in terms of vehicles being properly parallel parked; without designated stalls, vehicles often occupy an inappropriate amount of space, which creates inefficiencies in the use of available on-street parking space by reducing the supply. It is recommended to clearly mark parking spaces along Las Olas Boulevard to current standards. Typical on-street parking dimensions vary depending on spatial constraints and urban environment objectives. Table 3 lists typical suburban and more transit supportive parking design standards.

Table 3: Parallel Parking Design Standards

	Typical Suburban Requirement	Transit-supportive Metric
Length	20'	18'
Depth	10-11'	8-8.5'

Strategy 2: Improved Signage

For parking and deliveries, wayfinding and designated zones should be clearly signed and include any time-of-day restrictions. As mentioned previously, enforcement of these restrictions is paramount. In conjunction with this signing, the City should review detailed wayfinding plans for parking. Although parking along Las Olas experiences fairly high use, there is ample underused parking one block north and south of Las Olas Boulevard in public and private lots.

Long-term Strategy 3: Truck Route Plan

Per discussions with business representatives and the City, it is desirable to reduce the number of trucks traversing Las Olas Boulevard. A strategy to achieve this would be to designate a truck circulation route that would minimize the distance delivery trucks have to travel along Las Olas Boulevard before and after deliveries. This designation could be implemented and enforced through a local ordinance.

Long-term Strategy 4: Provide Loading from Private Parking Lots

A potential strategy to also reduce loading and unloading activity from Las Olas Boulevard would be to work with business owners to designate that loading and unloading, where feasible, be undertaken from private surface lots. The businesses could designate loading areas by time of day. It should be noted that parking in the surface lots is not heavily utilized during the peak loading and unloading time periods and, as such, this should have minimal impact on parking demand and accessibility.

Long-term Strategy 5: Provide Alley Access

Perhaps the most effective way to eliminate the loading/unloading activity along Las Olas Boulevard would be to provide exclusive access for loading and unloading to the alleys behind the businesses. As noted, however, most alleys are too small and have obstructions that inhibit the ability of deliveries to access businesses from behind. For deliveries that rely on Box Trucks, the alley could provide access in the current configuration. Business owners could mandate that such deliveries do use the alley where alley access to businesses is provided.

In the long term, opportunities to remove obstructions from alleys to provide one-way access should be sought. If it is determined that widening is required to facilitate this access, this effort should be coordinated with any redevelopment.

Las Olas Boulevard Parking and Delivery Evaluation

Additionally, with any redevelopment of parcels along Las Olas Boulevard, providing access to alleys from the business for the purposes of loading/unloading activity and waste collection should be sought.

Long-term Strategy 6: Education and Enforcement

All long-term changes should be carefully integrated into an education and enforcement campaign. This campaign should explain any changes and be closely coordinated with enforcement, businesses, and patrons. In addition, outreach should be made to major delivery companies such as UPS and FedEx.

Long-term Strategy 7: Private Property Improvements at Fort Lauderdale Hospital

Although “No Parking” signs are prominently positioned adjacent to the hospital’s main entrance at 1601 Las Olas Boulevard, ambulances have been observed dropping off/picking up patients along Las Olas Boulevard, obstructing the bike lane and outside travel lane. This obstructs traffic and is unsafe. If the hospital cannot designate alternative access for ambulances, the City should coordinate with it to construct a drop-off area (similar to a bus bay) and secure an easement to maintain the existing sidewalk width at the hospital’s expense.

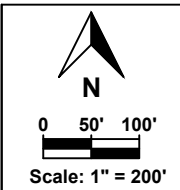
Appendix A
Parking Occupancy by Type Exhibits



**Parking Utilization
Wednesday 04/19/17 AM Count**



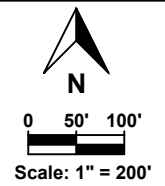
Parking Utilization Wednesday 04/19/17 MID Count



Parking Utilization Wednesday 04/19/17 PM Count

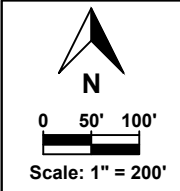


Parking Utilization Thursday 04/20/17 AM Count





Parking Utilization Thursday 04/20/17 MID Count



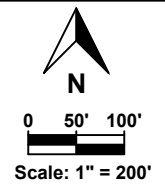
LEGEND	
XX/YY	TAKEN SPOTS / TOTAL SPOTS



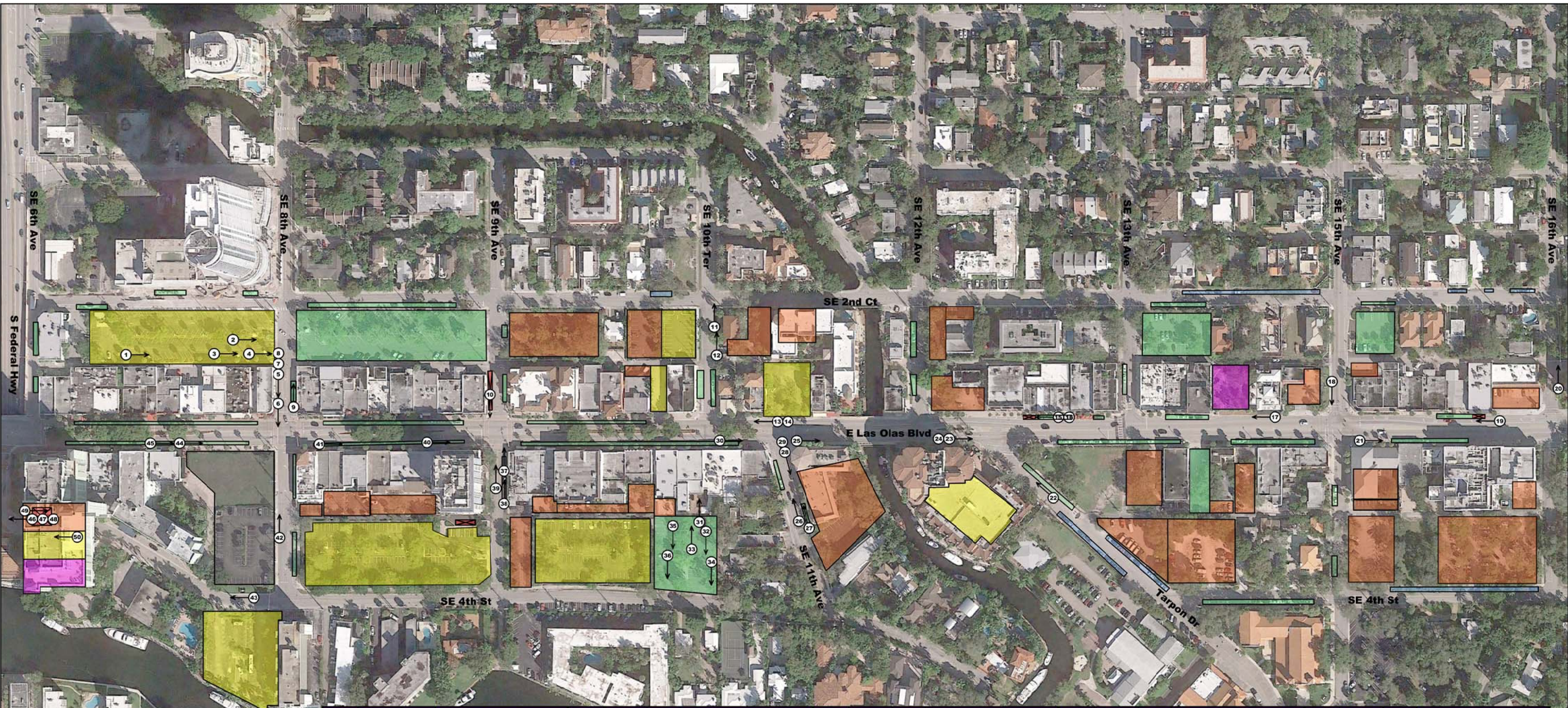
Parking Utilization Thursday 04/20/17 PM Count



Parking Utilization Saturday 04/29/17 PM Count

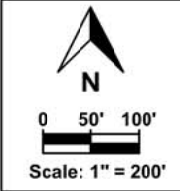


Appendix B
Loading and Unloading Observations



PARKING TYPE	
■	PUBLIC PAID PARKING
■	PUBLIC FREE PARKING
■	PRIVATE FOR PUBLIC (PAID)
■	PRIVATE (PERMIT OR CUSTOMERS)
■	VALET PARKING
■	CONSTRUCTION SITE
X	LOADING AND UNLOADING ZONE

NO.	DATE	TIME	DESCRIPTION	NO.	DATE	TIME	DESCRIPTION	NO.	DATE	TIME	DESCRIPTION	NO.	DATE	TIME	DESCRIPTION	NO.	DATE	TIME	DESCRIPTION
1	04/19/17	07:29	DELIVERY TRUCK	11	04/20/17	12:00	PBR TRUCK	21	04/20/17	08:28	SYSCO TRUCK	31	04/20/17	07:35	WORK VAN	41	04/19/17	10:30	POLICE CAR
2	04/20/17	09:46	SYSCO	12	04/20/17	12:13	GOOSE ISLAND TRUCK	22	04/19/17	10:37	BUDWEISER TRUCK	32	04/20/17	07:35	DELIVERY TRUCK	42	04/19/17	11:35	BUILDING SUPPLY TRUCK
3	04/20/17	09:46	GRAND WESTERN STEAK	13	04/19/17	13:32	TAXI	23	04/19/17	11:47	USPS MAIL TRUCK	33	04/19/17	07:34	PRIME LINE DISTRIBUTORS	43	04/20/17	07:47	BUDWEISER TRUCK
4	04/20/17	09:46	FREEDOM FRESH	14	04/19/17	13:36	TAXI	24	04/19/17	16:18	FEDEX TRUCK	34	04/18/17	14:07	WINE TRUCK	44	04/19/17	07:16	BAKERY VAN
5	04/19/17	07:30	DELIVERY TRUCK	15	04/20/17	07:31	FRESH POINT TRUCK	25	04/19/17	13:28	SYSCO TRUCK	35	04/19/17	11:42	ATLANTIC TRUCK	45	04/19/17	07:20	TAXI
6	04/19/17	05:00	TAXI	16	04/20/17	07:34	DELIVERY TRUCK	26	04/19/17	11:47	UPS TRUCK	36	04/19/17	11:42	UPS TRUCK	46	04/20/17	07:07	PREMIER PRODUCE TRUCK
7	05/12/17	23:00	GOLF CART	17	04/19/17	12:07	UBER	27	04/20/17	07:46	DELIVERY TRUCK	37	04/19/17	12:00	WORK TRUCK	47	04/19/17	07:11	ECOLAB VAN
8	05/12/17	23:00	GOLF CART	18	04/19/17	11:59	WHITE TRUCK	28	04/19/17	13:31	SYSCO TRUCK	38	04/19/17	10:29	OLD DOMINION TRUCK	48	04/19/17	07:11	DELIVERY TRUCK
9	05/12/17	23:00	TAXI	19	04/20/17	07:33	LAGUNITAS BEER TRUCK	29	04/19/17	13:31	SYSCO VAN	39	04/20/17	11:41	PBR TRUCK	49	04/20/17	07:47	SYSCO TRUCK
10	04/19/17	12:00	TAXI	20	04/19/17	10:39	IRON MT. TRUCK	30	04/19/17	13:29	TAXI	40	04/19/17	10:41	FEDEX TRUCK	50	04/20/17	07:50	CBI TRUCK



Las Olas Blvd Loading and Unloading Observations



Loading zone under Riverside Hotel parking garage.



Loading zone for business at 888 Las Olas Boulevard.



Loading zone in front of Seven-Eleven business establishment.



Taxi stand near Chico's retail establishment.



Bakery van parked along Las Olas Boulevard during AM Peak.



Food delivery truck driving along Las Olas Boulevard.



Private parking for First Presbyterian Church.



Delivery truck parked on Las Olas public lot.



Delivery trucks parked under Riverside Hotel parking garage.



Delivery truck parked in travel lane of side street.



Delivery trucked parked in off-street public lot.



Private parking garage that is often over capacity.



Parked delivery truck on travel lane of Las Olas Boulevard.



Parked truck near designated loading zone on Las Olas Blvd.



Delivery truck parked along sidewalk under parking garage.



Delivery truck parked in travel lane of Las Olas Boulevard



Delivery trucks parked during AM peak in private for public lot.



Passenger car maneuvering around parked delivery truck.



Uber drop off on Las Olas Boulevard.



Delivery truck blocking passenger car trying to exit public parking space.



Parking signage along Las Olas Boulevard.



Parked delivery truck in travel lane and on-street parking spaces.



Parked delivery truck in travel lane.



Parked FedEx truck on Las Olas Boulevard.

Appendix C
Notes from Solid Waste and Recycling Meeting

W.T. Bowman

From: W.T. Bowman
Sent: Tuesday, May 16, 2017 12:10 PM
To: 'Catherine Prince'
Cc: Demian Miller; Jessica Mackey
Subject: Las Olas Boulevard: Solid-waste and Recycling Meeting Summary

What an informative meeting! I never knew so much went into waste disposal considerations.

The meeting was attended by Catherine Prince, W. T., Dr. Nancy Gassman, and Melissa Doyle. Below are some of the major notes I had. Catherine, let me know if you have anything to add.

- There are approximately 10 to 12 waste disposal providers.
- The alley is impassable, in many locations, for waste hauling vehicles
- Once we get a list of properties to Melissa, she can get info about the frequency of service and the type (dumpster, roll-away, etc.) as well as if it is serviced along Las Olas itself.
- It is estimated, and should be determined in the surveys, that approximately 25% of the uses would have curb side service and the frequency would be 2-3 times per week on average.
- It is likely that the companies are servicing early in the morning in order to avoid traffic, parked cars, etc.
- Once we determine the extent of the issue (largely based on frequency and time of day) there are several strategies to consider. They vary based on schedule and could be “phased”
 1. Identify the extent of the issue (number of locations and time of day)
 2. Assess alternatives to curbside pickup (alleys, consolidated enclosures)
 3. Designate existing sidestreet parallel parking for enclosures or pick up points
 4. Change service type (dumpster to roll off to carts, for instance)
 5. Change or renegotiate allowable service times on Las Olas Blvd
 6. Modifications to code
- Any changes to service would, initially, need to be agreed to by tenants as it is likely to result in increased fees which the property owners/tenants are responsible for in individual contracts
- Parks and Rec conducts waste disposal for the on-street receptacles

Next steps:

- Melissa to review the survey and provide feedback
- Survey to be distributed (WT to Van)
- Assess preliminary options from 6th to 15th in advance of the survey results
- Refine the results
- Review potential Phase 2/Phase 3 strategies
- Coordinate with Park and Rec on their schedule of service

W. T. Bowman, P.E.

ASSOCIATE DIRECTOR OF
TRANSPORTATION ENGINEERING AND SAFETY

Tampa Headquarters
1000 N. Ashley Dr., Suite 400
Tampa, FL 33602
(813) 224-8862 ext. 1285
Fax (813) 226-2106

Appendix D
Results of Survey of Local Businesses

Jessica Mackey

From: system@fortlauderdale.gov
Sent: Wednesday, May 24, 2017 4:47 PM
To: EVanZandt@fortlauderdale.gov; CPrince@fortlauderdale.gov; mdamiano@fortlauderdale.gov; Jessica Mackey; W.T. Bowman
Subject: New Las Olas Boulevard Parking and Deliveries Study Response

A new entry to a form/survey has been submitted.

Form Name: Las Olas Boulevard Parking and Deliveries Study
Date & Time: May 24, 2017 4:46 PM
Response #: 25
Submitter ID: 7233
IP address: 162.231.234.206
Time to complete: 4 min. , 48 sec.

Survey Details

Page 1

1. Business Information

Business Name Dazzles **Your Name:** Lucy Sterling

2. Do you receive deliveries on Las Olas Boulevard?

Yes

3. What type(s) of deliveries do you commonly receive (Please check all that apply.)?

Parcel Services (UPS, FedEx, DHL, etc.)

4. How often do you receive deliveries on Las Olas Boulevard?

Daily

5. What time(s) do you typically receive deliveries (Please check all that apply.)?

9am - Noon

6. Based on the above question, what is the most common time frame you receive deliveries?

9am - Noon

7. Where do the delivery drivers typically park when they make deliveries to your business?

On-Street Parking

8. How long does it typically take to make a delivery to a business on Las Olas Boulevard?

10 - 15 minutes

9. Does your company receive waste collection services on Las Olas Boulevard?

No

10. If you answered yes to the previous question, which contractor provides your waste collection service? Please write the name of the contractor in the field below. If you are not aware please leave this question blank.

Not answered

Page 2

11. Do you operate valet service on Las Olas Boulevard?

No (Please skip to the next page.)

12. Does your staff operate valet parking or do you hire a valet service provider?

Not answered

13. Does your valet service along Las Olas Boulevard use:

Not answered

14. Which days do you offer valet service (Please check all that apply.)?

Not answered

15. What time of day do you offer valet service?

Not answered

16. On a moderately busy day, about how many cars use your valet service at a time?

Not answered

17. Where do Uber/Lyft drivers and other ride share providers stop to drop off your clients?

Not answered

Page 3

18. Please share any comments, questions, or concerns you may have. If you would like someone to follow up with you, please make sure to provide your contact information in your response.

The street is in sad shape.
Lucy Sterling
954-525-0500

Thank you,
City of Fort Lauderdale, FL

This is an automated message generated by the Vision Content Management System™. Please do not reply directly to this email.

Jessica Mackey

From: system@fortlauderdale.gov
Sent: Wednesday, May 24, 2017 2:51 PM
To: EVanZandt@fortlauderdale.gov; CPrince@fortlauderdale.gov;
mdamiano@fortlauderdale.gov; Jessica Mackey; W.T. Bowman
Subject: New Las Olas Boulevard Parking and Deliveries Study Response

A new entry to a form/survey has been submitted.

Form Name: Las Olas Boulevard Parking and Deliveries Study
Date & Time: May 24, 2017 2:50 PM
Response #: 24
Submitter ID: 7231
IP address: 65.152.244.118
Time to complete: 2 min. , 29 sec.

Survey Details

Page 1

1. Business Information

Business Name National Geographic | Fine Art Galleries **Your Name:** Jason Taylor

2. Do you receive deliveries on Las Olas Boulevard?

Yes

3. What type(s) of deliveries do you commonly receive (Please check all that apply.)?

Parcel Services (UPS, FedEx, DHL, etc.)

4. How often do you receive deliveries on Las Olas Boulevard?

A few times a week

5. What time(s) do you typically receive deliveries (Please check all that apply.)?

9am - Noon

Noon - 4pm

6. Based on the above question, what is the most common time frame you receive deliveries?

9am - Noon

7. Where do the delivery drivers typically park when they make deliveries to your business?

Other (Please explain)

sometimes in the front, sometimes in the back alley

8. How long does it typically take to make a delivery to a business on Las Olas Boulevard?

0 - 5 minutes

9. Does your company receive waste collection services on Las Olas Boulevard?

No

10. If you answered yes to the previous question, which contractor provides your waste collection service? Please write the name of the contractor in the field below. If you are not aware please leave this question blank.

Not answered

Page 2

11. Do you operate valet service on Las Olas Boulevard?

No (Please skip to the next page.)

12. Does your staff operate valet parking or do you hire a valet service provider?

Not answered

13. Does your valet service along Las Olas Boulevard use:

Not answered

14. Which days do you offer valet service (Please check all that apply.)?

Not answered

15. What time of day do you offer valet service?

Not answered

16. On a moderately busy day, about how many cars use your valet service at a time?

Not answered

17. Where do Uber/Lyft drivers and other ride share providers stop to drop off your clients?

Not answered

Page 3

18. Please share any comments, questions, or concerns you may have. If you would like someone to follow up with you, please make sure to provide your contact information in your response.

Not answered

Thank you,
City of Fort Lauderdale, FL

This is an automated message generated by the Vision Content Management System™. Please do not reply directly to this email.

Jessica Mackey

From: system@fortlauderdale.gov
Sent: Tuesday, May 23, 2017 10:26 PM
To: EVanZandt@fortlauderdale.gov; CPrince@fortlauderdale.gov;
mdamiano@fortlauderdale.gov; Jessica Mackey; W.T. Bowman
Subject: New Las Olas Boulevard Parking and Deliveries Study Response

A new entry to a form/survey has been submitted.

Form Name: Las Olas Boulevard Parking and Deliveries Study
Date & Time: May 23, 2017 10:26 PM
Response #: 23
Submitter ID: 7222
IP address: 66.176.104.49
Time to complete: 6 min. , 41 sec.

Survey Details

Page 1

1. Business Information

Business Name New River Fine Art **Your Name:** Lisa Burgess

2. Do you receive deliveries on Las Olas Boulevard?

Yes

3. What type(s) of deliveries do you commonly receive (Please check all that apply.)?

Parcel Services (UPS, FedEx, DHL, etc.)

4. How often do you receive deliveries on Las Olas Boulevard?

A few times a week

5. What time(s) do you typically receive deliveries (Please check all that apply.)?

9am - Noon

Noon - 4pm

6. Based on the above question, what is the most common time frame you receive deliveries?

Noon - 4pm

7. Where do the delivery drivers typically park when they make deliveries to your business?

Other (Please explain)

Alley behind gallery

8. How long does it typically take to make a delivery to a business on Las Olas Boulevard?

0 - 5 minutes

9. Does your company receive waste collection services on Las Olas Boulevard?

Yes

10. If you answered yes to the previous question, which contractor provides your waste collection service? Please write the name of the contractor in the field below. If you are not aware please leave this question blank.

Not answered

Page 2

11. Do you operate valet service on Las Olas Boulevard?

No (Please skip to the next page.)

12. Does your staff operate valet parking or do you hire a valet service provider?

Not answered

13. Does your valet service along Las Olas Boulevard use:

Not answered

14. Which days do you offer valet service (Please check all that apply.)?

Not answered

15. What time of day do you offer valet service?

Not answered

16. On a moderately busy day, about how many cars use your valet service at a time?

Not answered

17. Where do Uber/Lyft drivers and other ride share providers stop to drop off your clients?

Not answered

Page 3

18. Please share any comments, questions, or concerns you may have. If you would like someone to follow up with you, please make sure to provide your contact information in your response.

Las Olas should allow trucks for local deliveries only. Meaning trucks that are delivering items ONLY to the businesses between SE 15th and SE 9th. There are alternate routes for any other delivery address. In addition, these local delivery trucks should be directed to the roads and alleys behind the businesses.

Thank you,
City of Fort Lauderdale, FL

This is an automated message generated by the Vision Content Management System™. Please do not reply directly to this email.

Jessica Mackey

From: system@fortlauderdale.gov
Sent: Tuesday, May 23, 2017 4:07 PM
To: EVanZandt@fortlauderdale.gov; CPrince@fortlauderdale.gov;
mdamiano@fortlauderdale.gov; Jessica Mackey; W.T. Bowman
Subject: New Las Olas Boulevard Parking and Deliveries Study Response

A new entry to a form/survey has been submitted.

Form Name: Las Olas Boulevard Parking and Deliveries Study
Date & Time: May 23, 2017 4:06 PM
Response #: 22
Submitter ID: 7218
IP address: 75.74.175.243
Time to complete: 3 min. , 55 sec.

Survey Details

Page 1

1. Business Information

Business Name Sienna Galleries **Your Name:** Andre Koshelnik

2. Do you receive deliveries on Las Olas Boulevard?

Yes

3. What type(s) of deliveries do you commonly receive (Please check all that apply.)?

Parcel Services (UPS, FedEx, DHL, etc.)

4. How often do you receive deliveries on Las Olas Boulevard?

A few times a week

5. What time(s) do you typically receive deliveries (Please check all that apply.)?

9am - Noon

Noon - 4pm

6. Based on the above question, what is the most common time frame you receive deliveries?

Noon - 4pm

7. Where do the delivery drivers typically park when they make deliveries to your business?

On-Street Parking

8. How long does it typically take to make a delivery to a business on Las Olas Boulevard?

0 - 5 minutes

9. Does your company receive waste collection services on Las Olas Boulevard?

No

10. If you answered yes to the previous question, which contractor provides your waste collection service? Please write the name of the contractor in the field below. If you are not aware please leave this question blank.

Not answered

Page 2

11. Do you operate valet service on Las Olas Boulevard?

No (Please skip to the next page.)

12. Does your staff operate valet parking or do you hire a valet service provider?

Not answered

13. Does your valet service along Las Olas Boulevard use:

Not answered

14. Which days do you offer valet service (Please check all that apply.)?

Not answered

15. What time of day do you offer valet service?

Not answered

16. On a moderately busy day, about how many cars use your valet service at a time?

Not answered

17. Where do Uber/Lyft drivers and other ride share providers stop to drop off your clients?

Not answered

Page 3

18. Please share any comments, questions, or concerns you may have. If you would like someone to follow up with you, please make sure to provide your contact information in your response.

Not answered

Thank you,
City of Fort Lauderdale, FL

This is an automated message generated by the Vision Content Management System™. Please do not reply directly to this email.

Jessica Mackey

From: system@fortlauderdale.gov
Sent: Tuesday, May 23, 2017 4:04 PM
To: EVanZandt@fortlauderdale.gov; CPrince@fortlauderdale.gov;
mdamiano@fortlauderdale.gov; Jessica Mackey; W.T. Bowman
Subject: New Las Olas Boulevard Parking and Deliveries Study Response

A new entry to a form/survey has been submitted.

Form Name: Las Olas Boulevard Parking and Deliveries Study
Date & Time: May 23, 2017 4:03 PM
Response #: 21
Submitter ID: 7217
IP address: 45.17.56.215
Time to complete: 3 min. , 38 sec.

Survey Details

Page 1

1. Business Information

Business Name Optical Spectrum **Your Name:** Michael Werzer

2. Do you receive deliveries on Las Olas Boulevard?

Yes

3. What type(s) of deliveries do you commonly receive (Please check all that apply.)?

Parcel Services (UPS, FedEx, DHL, etc.)

4. How often do you receive deliveries on Las Olas Boulevard?

Daily

5. What time(s) do you typically receive deliveries (Please check all that apply.)?

9am - Noon

6. Based on the above question, what is the most common time frame you receive deliveries?

9am - Noon

7. Where do the delivery drivers typically park when they make deliveries to your business?

Not answered

8. How long does it typically take to make a delivery to a business on Las Olas Boulevard?

0 - 5 minutes

9. Does your company receive waste collection services on Las Olas Boulevard?

No

10. If you answered yes to the previous question, which contractor provides your waste collection service? Please write the name of the contractor in the field below. If you are not aware please leave this question blank.

Not answered

Page 2

11. Do you operate valet service on Las Olas Boulevard?

No (Please skip to the next page.)

12. Does your staff operate valet parking or do you hire a valet service provider?

Not answered

13. Does your valet service along Las Olas Boulevard use:

Not answered

14. Which days do you offer valet service (Please check all that apply.)?

Not answered

15. What time of day do you offer valet service?

Not answered

16. On a moderately busy day, about how many cars use your valet service at a time?

Not answered

17. Where do Uber/Lyft drivers and other ride share providers stop to drop off your clients?

Not answered

Page 3

18. Please share any comments, questions, or concerns you may have. If you would like someone to follow up with you, please make sure to provide your contact information in your response.

I believe the majority of stores have back entrances attached to the alley ways. I am sure we could all receive deliveries behind the stores

Thank you,
City of Fort Lauderdale, FL

This is an automated message generated by the Vision Content Management System™. Please do not reply directly to this email.

Jessica Mackey

From: system@fortlauderdale.gov
Sent: Tuesday, May 23, 2017 12:50 PM
To: EVanZandt@fortlauderdale.gov; CPrince@fortlauderdale.gov;
mdamiano@fortlauderdale.gov; Jessica Mackey; W.T. Bowman
Subject: New Las Olas Boulevard Parking and Deliveries Study Response

A new entry to a form/survey has been submitted.

Form Name: Las Olas Boulevard Parking and Deliveries Study
Date & Time: May 23, 2017 12:49 PM
Response #: 20
Submitter ID: 7214
IP address: 75.74.240.98
Time to complete: 3 min. , 52 sec.

Survey Details

Page 1

1. Business Information

Business Name American Social **Your Name:** Richard Rubits

2. Do you receive deliveries on Las Olas Boulevard?

Yes

3. What type(s) of deliveries do you commonly receive (Please check all that apply.)?

Restaurant Supplies

4. How often do you receive deliveries on Las Olas Boulevard?

A few times a week

5. What time(s) do you typically receive deliveries (Please check all that apply.)?

7am - 9am

9am - Noon

6. Based on the above question, what is the most common time frame you receive deliveries?

9am - Noon

7. Where do the delivery drivers typically park when they make deliveries to your business?

Other (Please explain)

Parking lot directly behind business

8. How long does it typically take to make a delivery to a business on Las Olas Boulevard?

More than 15 minutes

9. Does your company receive waste collection services on Las Olas Boulevard?

Yes

10. If you answered yes to the previous question, which contractor provides your waste collection service? Please write the name of the contractor in the field below. If you are not aware please leave this question blank.

Waste Management

Page 2

11. Do you operate valet service on Las Olas Boulevard?

No (Please skip to the next page.)

12. Does your staff operate valet parking or do you hire a valet service provider?

Not answered

13. Does your valet service along Las Olas Boulevard use:

Not answered

14. Which days do you offer valet service (Please check all that apply.)?

Not answered

15. What time of day do you offer valet service?

Not answered

16. On a moderately busy day, about how many cars use your valet service at a time?

Not answered

17. Where do Uber/Lyft drivers and other ride share providers stop to drop off your clients?

Not answered

Page 3

18. Please share any comments, questions, or concerns you may have. If you would like someone to follow up with you, please make sure to provide your contact information in your response.

Not answered

Thank you,
City of Fort Lauderdale, FL

This is an automated message generated by the Vision Content Management System™. Please do not reply directly to this email.

Jessica Mackey

From: system@fortlauderdale.gov
Sent: Tuesday, May 23, 2017 11:53 AM
To: EVanZandt@fortlauderdale.gov; CPrince@fortlauderdale.gov;
mdamiano@fortlauderdale.gov; Jessica Mackey; W.T. Bowman
Subject: New Las Olas Boulevard Parking and Deliveries Study Response

A new entry to a form/survey has been submitted.

Form Name: Las Olas Boulevard Parking and Deliveries Study
Date & Time: May 23, 2017 11:53 AM
Response #: 19
Submitter ID: 7209
IP address: 75.18.114.203
Time to complete: 3 min. , 45 sec.

Survey Details

Page 1

1. Business Information

Business Name	Andre Dupree Designer Handbags	Your Name:	Sharon Holland
----------------------	--------------------------------	-------------------	----------------

2. Do you receive deliveries on Las Olas Boulevard?

Yes

3. What type(s) of deliveries do you commonly receive (Please check all that apply.)?

Parcel Services (UPS, FedEx, DHL, etc.)

Other (Please specify)

Merchandise delivered by private messenger

4. How often do you receive deliveries on Las Olas Boulevard?

A few times a week

5. What time(s) do you typically receive deliveries (Please check all that apply.)?

9am - Noon

6. Based on the above question, what is the most common time frame you receive deliveries?

9am - Noon

7. Where do the delivery drivers typically park when they make deliveries to your business?

On-Street Parking

8. How long does it typically take to make a delivery to a business on Las Olas Boulevard?

0 - 5 minutes

9. Does your company receive waste collection services on Las Olas Boulevard?

No

10. If you answered yes to the previous question, which contractor provides your waste collection service? Please write the name of the contractor in the field below. If you are not aware please leave this question blank.

Not answered

Page 2

11. Do you operate valet service on Las Olas Boulevard?

No (Please skip to the next page.)

12. Does your staff operate valet parking or do you hire a valet service provider?

Not answered

13. Does your valet service along Las Olas Boulevard use:

Not answered

14. Which days do you offer valet service (Please check all that apply.)?

Not answered

15. What time of day do you offer valet service?

Not answered

16. On a moderately busy day, about how many cars use your valet service at a time?

Not answered

17. Where do Uber/Lyft drivers and other ride share providers stop to drop off your clients?

Not answered

18. Please share any comments, questions, or concerns you may have. If you would like someone to follow up with you, please make sure to provide your contact information in your response.

Not answered

Thank you,
City of Fort Lauderdale, FL

This is an automated message generated by the Vision Content Management System™. Please do not reply directly to this email.

Jessica Mackey

From: system@fortlauderdale.gov
Sent: Tuesday, May 23, 2017 9:38 AM
To: EVanZandt@fortlauderdale.gov; CPrince@fortlauderdale.gov;
mdamiano@fortlauderdale.gov; Jessica Mackey; W.T. Bowman
Subject: New Las Olas Boulevard Parking and Deliveries Study Response

A new entry to a form/survey has been submitted.

Form Name: Las Olas Boulevard Parking and Deliveries Study
Date & Time: May 23, 2017 9:38 AM
Response #: 18
Submitter ID: 7204
IP address: 162.231.232.51
Time to complete: 7 min. , 7 sec.

Survey Details

Page 1

1. Business Information

Business Name Echo Salon **Your Name:** James Genovese

2. Do you receive deliveries on Las Olas Boulevard?

Yes

3. What type(s) of deliveries do you commonly receive (Please check all that apply.)?

Parcel Services (UPS, FedEx, DHL, etc.)

Office Supplies

4. How often do you receive deliveries on Las Olas Boulevard?

A few times a week

5. What time(s) do you typically receive deliveries (Please check all that apply.)?

9am - Noon

6. Based on the above question, what is the most common time frame you receive deliveries?

9am - Noon

7. Where do the delivery drivers typically park when they make deliveries to your business?

Travel Lane

8. How long does it typically take to make a delivery to a business on Las Olas Boulevard?

0 - 5 minutes

9. Does your company receive waste collection services on Las Olas Boulevard?

No

10. If you answered yes to the previous question, which contractor provides your waste collection service? Please write the name of the contractor in the field below. If you are not aware please leave this question blank.

Not answered

Page 2

11. Do you operate valet service on Las Olas Boulevard?

No (Please skip to the next page.)

12. Does your staff operate valet parking or do you hire a valet service provider?

Not answered

13. Does your valet service along Las Olas Boulevard use:

Not answered

14. Which days do you offer valet service (Please check all that apply.)?

Not answered

15. What time of day do you offer valet service?

Not answered

16. On a moderately busy day, about how many cars use your valet service at a time?

Not answered

17. Where do Uber/Lyft drivers and other ride share providers stop to drop off your clients?

Not answered

Page 3

18. Please share any comments, questions, or concerns you may have. If you would like someone to follow up with you, please make sure to provide your contact information in your response.

Not answered

Thank you,
City of Fort Lauderdale, FL

This is an automated message generated by the Vision Content Management System™. Please do not reply directly to this email.

Jessica Mackey

From: system@fortlauderdale.gov
Sent: Tuesday, May 23, 2017 7:47 AM
To: EVanZandt@fortlauderdale.gov; CPrince@fortlauderdale.gov;
mdamiano@fortlauderdale.gov; Jessica Mackey; W.T. Bowman
Subject: New Las Olas Boulevard Parking and Deliveries Study Response

A new entry to a form/survey has been submitted.

Form Name: Las Olas Boulevard Parking and Deliveries Study
Date & Time: May 23, 2017 7:46 AM
Response #: 17
Submitter ID: 7202
IP address: 12.247.64.82
Time to complete: 2 min. , 37 sec.

Survey Details

Page 1

1. Business Information

Business Name CB **Your Name:** Mike Mangold

2. Do you receive deliveries on Las Olas Boulevard?

Yes

3. What type(s) of deliveries do you commonly receive (Please check all that apply.)?

Parcel Services (UPS, FedEx, DHL, etc.)

Office Supplies

4. How often do you receive deliveries on Las Olas Boulevard?

Several times a day

5. What time(s) do you typically receive deliveries (Please check all that apply.)?

9am - Noon

6. Based on the above question, what is the most common time frame you receive deliveries?

Noon - 4pm

7. Where do the delivery drivers typically park when they make deliveries to your business?

Other (Please explain)

don't know

8. How long does it typically take to make a delivery to a business on Las Olas Boulevard?

0 - 5 minutes

9. Does your company receive waste collection services on Las Olas Boulevard?

Yes

10. If you answered yes to the previous question, which contractor provides your waste collection service? Please write the name of the contractor in the field below. If you are not aware please leave this question blank.

The Las Olas Company

Page 2

11. Do you operate valet service on Las Olas Boulevard?

No (Please skip to the next page.)

12. Does your staff operate valet parking or do you hire a valet service provider?

Not answered

13. Does your valet service along Las Olas Boulevard use:

Not answered

14. Which days do you offer valet service (Please check all that apply.)?

Not answered

15. What time of day do you offer valet service?

Not answered

16. On a moderately busy day, about how many cars use your valet service at a time?

Not answered

17. Where do Uber/Lyft drivers and other ride share providers stop to drop off your clients?

Not answered

Page 3

18. Please share any comments, questions, or concerns you may have. If you would like someone to follow up with you, please make sure to provide your contact information in your response.

Not answered

Thank you,
City of Fort Lauderdale, FL

This is an automated message generated by the Vision Content Management System™. Please do not reply directly to this email.

Jessica Mackey

From: system@fortlauderdale.gov
Sent: Monday, May 22, 2017 6:23 PM
To: EVanZandt@fortlauderdale.gov; CPrince@fortlauderdale.gov;
mdamiano@fortlauderdale.gov; Jessica Mackey; W.T. Bowman
Subject: New Las Olas Boulevard Parking and Deliveries Study Response

A new entry to a form/survey has been submitted.

Form Name: Las Olas Boulevard Parking and Deliveries Study
Date & Time: May 22, 2017 6:22 PM
Response #: 16
Submitter ID: 7196
IP address: 162.231.235.92
Time to complete: 6 min. , 50 sec.

Survey Details

Page 1

1. Business Information

Business Name Wyland Galleries **Your Name:** Terry Hanna

2. Do you receive deliveries on Las Olas Boulevard?

Yes

3. What type(s) of deliveries do you commonly receive (Please check all that apply.)?

Parcel Services (UPS, FedEx, DHL, etc.)

Other (Please specify)

Large art Sculptures

4. How often do you receive deliveries on Las Olas Boulevard?

A few times a month

5. What time(s) do you typically receive deliveries (Please check all that apply.)?

7am - 9am

9am - Noon

Noon - 4pm

6. Based on the above question, what is the most common time frame you receive deliveries?

9am - Noon

7. Where do the delivery drivers typically park when they make deliveries to your business?

Travel Lane

8. How long does it typically take to make a delivery to a business on Las Olas Boulevard?

5 - 10 minutes

9. Does your company receive waste collection services on Las Olas Boulevard?

Yes

10. If you answered yes to the previous question, which contractor provides your waste collection service? Please write the name of the contractor in the field below. If you are not aware please leave this question blank.

Not answered

Page 2

11. Do you operate valet service on Las Olas Boulevard?

No (Please skip to the next page.)

12. Does your staff operate valet parking or do you hire a valet service provider?

We hire a valet service provider. (Please provide the company name and contact information.)

no valet

13. Does your valet service along Las Olas Boulevard use:

Not answered

14. Which days do you offer valet service (Please check all that apply.)?

Not answered

15. What time of day do you offer valet service?

Not answered

16. On a moderately busy day, about how many cars use your valet service at a time?

Not answered

17. Where do Uber/Lyft drivers and other ride share providers stop to drop off your clients?

Not answered

18. Please share any comments, questions, or concerns you may have. If you would like someone to follow up with you, please make sure to provide your contact information in your response.

Not answered

Thank you,
City of Fort Lauderdale, FL

This is an automated message generated by the Vision Content Management System™. Please do not reply directly to this email.

Jessica Mackey

From: system@fortlauderdale.gov
Sent: Monday, May 22, 2017 5:33 PM
To: EVanZandt@fortlauderdale.gov; CPrince@fortlauderdale.gov;
mdamiano@fortlauderdale.gov; Jessica Mackey; W.T. Bowman
Subject: New Las Olas Boulevard Parking and Deliveries Study Response

A new entry to a form/survey has been submitted.

Form Name: Las Olas Boulevard Parking and Deliveries Study
Date & Time: May 22, 2017 5:32 PM
Response #: 15
Submitter ID: 7194
IP address: 69.84.106.45
Time to complete: 8 min. , 16 sec.

Survey Details

Page 1

1. Business Information

Business Name Swimland **Your Name:** Shelley Berk

2. Do you receive deliveries on Las Olas Boulevard?

Yes

3. What type(s) of deliveries do you commonly receive (Please check all that apply.)?

Other (Please specify)

Delivery of Merchandise from our warehouse

4. How often do you receive deliveries on Las Olas Boulevard?

A few times a week

5. What time(s) do you typically receive deliveries (Please check all that apply.)?

9am - Noon

6. Based on the above question, what is the most common time frame you receive deliveries?

9am - Noon

7. Where do the delivery drivers typically park when they make deliveries to your business?

Other (Please explain)

Behind our store- back door

8. How long does it typically take to make a delivery to a business on Las Olas Boulevard?

More than 15 minutes

9. Does your company receive waste collection services on Las Olas Boulevard?

Yes

10. If you answered yes to the previous question, which contractor provides your waste collection service? Please write the name of the contractor in the field below. If you are not aware please leave this question blank.

Waste removal is pursuant to lease with Landlord-not sure of contractor

Page 2

11. Do you operate valet service on Las Olas Boulevard?

No (Please skip to the next page.)

12. Does your staff operate valet parking or do you hire a valet service provider?

Not answered

13. Does your valet service along Las Olas Boulevard use:

Not answered

14. Which days do you offer valet service (Please check all that apply.)?

Not answered

15. What time of day do you offer valet service?

Not answered

16. On a moderately busy day, about how many cars use your valet service at a time?

Not answered

17. Where do Uber/Lyft drivers and other ride share providers stop to drop off your clients?

I don't know

18. Please share any comments, questions, or concerns you may have. If you would like someone to follow up with you, please make sure to provide your contact information in your response.

Parking on Las Olas is an issue

Thank you,
City of Fort Lauderdale, FL

This is an automated message generated by the Vision Content Management System™. Please do not reply directly to this email.

Jessica Mackey

From: system@fortlauderdale.gov
Sent: Monday, May 22, 2017 4:55 PM
To: EVanZandt@fortlauderdale.gov; CPrince@fortlauderdale.gov;
mdamiano@fortlauderdale.gov; Jessica Mackey; W.T. Bowman
Subject: New Las Olas Boulevard Parking and Deliveries Study Response

A new entry to a form/survey has been submitted.

Form Name: Las Olas Boulevard Parking and Deliveries Study
Date & Time: May 22, 2017 4:55 PM
Response #: 14
Submitter ID: 7193
IP address: 173.200.206.130
Time to complete: 3 min. , 16 sec.

Survey Details

Page 1

1. Business Information

Business Name Lobster Bar Sea Grille **Your Name:** George Mollas

2. Do you receive deliveries on Las Olas Boulevard?

No (Please skip to the next page.)

3. What type(s) of deliveries do you commonly receive (Please check all that apply.)?

Not answered

4. How often do you receive deliveries on Las Olas Boulevard?

Not answered

5. What time(s) do you typically receive deliveries (Please check all that apply.)?

Not answered

6. Based on the above question, what is the most common time frame you receive deliveries?

Not answered

7. Where do the delivery drivers typically park when they make deliveries to your business?

Not answered

8. How long does it typically take to make a delivery to a business on Las Olas Boulevard?

Not answered

9. Does your company receive waste collection services on Las Olas Boulevard?

No

10. If you answered yes to the previous question, which contractor provides your waste collection service? Please write the name of the contractor in the field below. If you are not aware please leave this question blank.

Not answered

Page 2

11. Do you operate valet service on Las Olas Boulevard?

Yes

12. Does your staff operate valet parking or do you hire a valet service provider?

We hire a valet service provider. (Please provide the company name and contact information.)

Eagle Parking

13. Does your valet service along Las Olas Boulevard use:

Other (Please specify)

Parking Garage

14. Which days do you offer valet service (Please check all that apply.)?

Monday

Tuesday

Wednesday

Thursday

Friday

Saturday

Sunday

15. What time of day do you offer valet service?

Other (Please specify)

11Am to 12AM

16. On a moderately busy day, about how many cars use your valet service at a time?

6

17. Where do Uber/Lyft drivers and other ride share providers stop to drop off your clients?

I don't know

Page 3

18. Please share any comments, questions, or concerns you may have. If you would like someone to follow up with you, please make sure to provide your contact information in your response.

Not answered

Thank you,
City of Fort Lauderdale, FL

This is an automated message generated by the Vision Content Management System™. Please do not reply directly to this email.

Jessica Mackey

From: system@fortlauderdale.gov
Sent: Monday, May 22, 2017 4:48 PM
To: EVanZandt@fortlauderdale.gov; CPrince@fortlauderdale.gov;
mdamiano@fortlauderdale.gov; Jessica Mackey; W.T. Bowman
Subject: New Las Olas Boulevard Parking and Deliveries Study Response

A new entry to a form/survey has been submitted.

Form Name: Las Olas Boulevard Parking and Deliveries Study
Date & Time: May 22, 2017 4:48 PM
Response #: 13
Submitter ID: 7192
IP address: 216.86.13.33
Time to complete: 3 min. , 24 sec.

Survey Details

Page 1

1. Business Information

Business Name CBI **Your Name:** TANYA SUMHOLZ

2. Do you receive deliveries on Las Olas Boulevard?

Yes

3. What type(s) of deliveries do you commonly receive (Please check all that apply.)?

Parcel Services (UPS, FedEx, DHL, etc.)

Office Supplies

4. How often do you receive deliveries on Las Olas Boulevard?

A few times a week

5. What time(s) do you typically receive deliveries (Please check all that apply.)?

9am - Noon

Noon - 4pm

6. Based on the above question, what is the most common time frame you receive deliveries?

9am - Noon

7. Where do the delivery drivers typically park when they make deliveries to your business?

On-Street Parking

8. How long does it typically take to make a delivery to a business on Las Olas Boulevard?

More than 15 minutes

9. Does your company receive waste collection services on Las Olas Boulevard?

No

10. If you answered yes to the previous question, which contractor provides your waste collection service? Please write the name of the contractor in the field below. If you are not aware please leave this question blank.

Not answered

Page 2

11. Do you operate valet service on Las Olas Boulevard?

No (Please skip to the next page.)

12. Does your staff operate valet parking or do you hire a valet service provider?

Not answered

13. Does your valet service along Las Olas Boulevard use:

Not answered

14. Which days do you offer valet service (Please check all that apply.)?

Not answered

15. What time of day do you offer valet service?

Not answered

16. On a moderately busy day, about how many cars use your valet service at a time?

Not answered

17. Where do Uber/Lyft drivers and other ride share providers stop to drop off your clients?

Not answered

Page 3

18. Please share any comments, questions, or concerns you may have. If you would like someone to follow up with you, please make sure to provide your contact information in your response.

Not answered

Thank you,
City of Fort Lauderdale, FL

This is an automated message generated by the Vision Content Management System™. Please do not reply directly to this email.

Jessica Mackey

From: system@fortlauderdale.gov
Sent: Monday, May 22, 2017 4:32 PM
To: EVanZandt@fortlauderdale.gov; CPrince@fortlauderdale.gov;
mdamiano@fortlauderdale.gov; Jessica Mackey; W.T. Bowman
Subject: New Las Olas Boulevard Parking and Deliveries Study Response

A new entry to a form/survey has been submitted.

Form Name: Las Olas Boulevard Parking and Deliveries Study
Date & Time: May 22, 2017 4:32 PM
Response #: 12
Submitter ID: 7191
IP address: 216.196.177.194
Time to complete: 11 min. , 32 sec.

Survey Details

Page 1

1. Business Information

Business Name Grille 401 **Your Name:** Lee Woodard

2. Do you receive deliveries on Las Olas Boulevard?

Yes

3. What type(s) of deliveries do you commonly receive (Please check all that apply.)?

Parcel Services (UPS, FedEx, DHL, etc.) Restaurant Supplies
 Office Supplies

4. How often do you receive deliveries on Las Olas Boulevard?

Daily

5. What time(s) do you typically receive deliveries (Please check all that apply.)?

7am - 9am
 9am - Noon
 Noon - 4pm

6. Based on the above question, what is the most common time frame you receive deliveries?

9am - Noon

7. Where do the delivery drivers typically park when they make deliveries to your business?

Other (Please explain)

Back Dock area of building and on the street.

8. How long does it typically take to make a delivery to a business on Las Olas Boulevard?

5 - 10 minutes

9. Does your company receive waste collection services on Las Olas Boulevard?

Yes

10. If you answered yes to the previous question, which contractor provides your waste collection service? Please write the name of the contractor in the field below. If you are not aware please leave this question blank.

The building contracts the vendors as they remove waste for many businesses

Page 2

11. Do you operate valet service on Las Olas Boulevard?

Yes

12. Does your staff operate valet parking or do you hire a valet service provider?

We hire a valet service provider. (Please provide the company name and contact information.)

13. Does your valet service along Las Olas Boulevard use:

Other (Please specify)

Garage

14. Which days do you offer valet service (Please check all that apply.)?

Monday

Wednesday

Friday

Sunday

Tuesday

Thursday

Saturday

15. What time of day do you offer valet service?

Other (Please specify)

5 till volume of business

16. On a moderately busy day, about how many cars use your valet service at a time?

15

17. Where do Uber/Lyft drivers and other ride share providers stop to drop off your clients?

(o) In the travel lane on Las Olas Boulevard

Page 3

18. Please share any comments, questions, or concerns you may have. If you would like someone to follow up with you, please make sure to provide your contact information in your response.

Not answered

Thank you,
City of Fort Lauderdale, FL

This is an automated message generated by the Vision Content Management System™. Please do not reply directly to this email.

Jessica Mackey

From: system@fortlauderdale.gov
Sent: Monday, May 22, 2017 3:29 PM
To: EVanZandt@fortlauderdale.gov; CPrince@fortlauderdale.gov;
mdamiano@fortlauderdale.gov; Jessica Mackey; W.T. Bowman
Subject: New Las Olas Boulevard Parking and Deliveries Study Response

A new entry to a form/survey has been submitted.

Form Name: Las Olas Boulevard Parking and Deliveries Study
Date & Time: May 22, 2017 3:28 PM
Response #: 11
Submitter ID: 7190
IP address: 73.204.180.227
Time to complete: 2 min. , 14 sec.

Survey Details

Page 1

1. Business Information

Business Name	Kilwins Chocolate and Ice Cream	Your Name:	William Renaud
----------------------	---------------------------------	-------------------	----------------

2. Do you receive deliveries on Las Olas Boulevard?

Yes

3. What type(s) of deliveries do you commonly receive (Please check all that apply.)?

Parcel Services (UPS, FedEx, DHL, etc.)

4. How often do you receive deliveries on Las Olas Boulevard?

A few times a month

5. What time(s) do you typically receive deliveries (Please check all that apply.)?

9am - Noon

6. Based on the above question, what is the most common time frame you receive deliveries?

9am - Noon

7. Where do the delivery drivers typically park when they make deliveries to your business?

Travel Lane

8. How long does it typically take to make a delivery to a business on Las Olas Boulevard?

0 - 5 minutes

9. Does your company receive waste collection services on Las Olas Boulevard?

No

10. If you answered yes to the previous question, which contractor provides your waste collection service? Please write the name of the contractor in the field below. If you are not aware please leave this question blank.

Not answered

Page 2

11. Do you operate valet service on Las Olas Boulevard?

No (Please skip to the next page.)

12. Does your staff operate valet parking or do you hire a valet service provider?

Not answered

13. Does your valet service along Las Olas Boulevard use:

Not answered

14. Which days do you offer valet service (Please check all that apply.)?

Not answered

15. What time of day do you offer valet service?

Not answered

16. On a moderately busy day, about how many cars use your valet service at a time?

Not answered

17. Where do Uber/Lyft drivers and other ride share providers stop to drop off your clients?

Not answered

Page 3

18. Please share any comments, questions, or concerns you may have. If you would like someone to follow up with you, please make sure to provide your contact information in your response.

Not answered

Thank you,
City of Fort Lauderdale, FL

This is an automated message generated by the Vision Content Management System™. Please do not reply directly to this email.

Jessica Mackey

From: system@fortlauderdale.gov
Sent: Monday, May 22, 2017 3:06 PM
To: EVanZandt@fortlauderdale.gov; CPrince@fortlauderdale.gov;
mdamiano@fortlauderdale.gov; Jessica Mackey; W.T. Bowman
Subject: New Las Olas Boulevard Parking and Deliveries Study Response

A new entry to a form/survey has been submitted.

Form Name: Las Olas Boulevard Parking and Deliveries Study
Date & Time: May 22, 2017 3:05 PM
Response #: 10
Submitter ID: 7189
IP address: 173.12.79.65
Time to complete: 18 min. , 7 sec.

Survey Details

Page 1

1. Business Information

Business Name Universal Court Reporting **Your Name:** K. Schlinsky

2. Do you receive deliveries on Las Olas Boulevard?

Yes

3. What type(s) of deliveries do you commonly receive (Please check all that apply.)?

Parcel Services (UPS, FedEx, DHL, etc.)

Office Supplies

Other (Please specify)

4. How often do you receive deliveries on Las Olas Boulevard?

Daily

5. What time(s) do you typically receive deliveries (Please check all that apply.)?

9am - Noon

Noon - 4pm

6. Based on the above question, what is the most common time frame you receive deliveries?

9am - Noon

7. Where do the delivery drivers typically park when they make deliveries to your business?

Other (Please explain)

8. How long does it typically take to make a delivery to a business on Las Olas Boulevard?

0 - 5 minutes

9. Does your company receive waste collection services on Las Olas Boulevard?

No

10. If you answered yes to the previous question, which contractor provides your waste collection service? Please write the name of the contractor in the field below. If you are not aware please leave this question blank.

Not answered

Page 2

11. Do you operate valet service on Las Olas Boulevard?

No (Please skip to the next page.)

12. Does your staff operate valet parking or do you hire a valet service provider?

Not answered

13. Does your valet service along Las Olas Boulevard use:

Not answered

14. Which days do you offer valet service (Please check all that apply.)?

Not answered

15. What time of day do you offer valet service?

Not answered

16. On a moderately busy day, about how many cars use your valet service at a time?

Not answered

17. Where do Uber/Lyft drivers and other ride share providers stop to drop off your clients?

Not answered

Page 3

18. Please share any comments, questions, or concerns you may have. If you would like someone to follow up with you, please make sure to provide your contact information in your response.

Not answered

Thank you,
City of Fort Lauderdale, FL

This is an automated message generated by the Vision Content Management System™. Please do not reply directly to this email.

Jessica Mackey

From: system@fortlauderdale.gov
Sent: Monday, May 22, 2017 2:49 PM
To: EVanZandt@fortlauderdale.gov; CPrince@fortlauderdale.gov;
mdamiano@fortlauderdale.gov; Jessica Mackey; W.T. Bowman
Subject: New Las Olas Boulevard Parking and Deliveries Study Response

A new entry to a form/survey has been submitted.

Form Name: Las Olas Boulevard Parking and Deliveries Study
Date & Time: May 22, 2017 2:49 PM
Response #: 9
Submitter ID: 7187
IP address: 75.74.222.56
Time to complete: 4 min. , 9 sec.

Survey Details

Page 1

1. Business Information

Business Name Bellagio International Gallery **Your Name:** Jennifer Dadario

2. Do you receive deliveries on Las Olas Boulevard?

Yes

3. What type(s) of deliveries do you commonly receive (Please check all that apply.)?

Parcel Services (UPS, FedEx, DHL, etc.)

4. How often do you receive deliveries on Las Olas Boulevard?

A few times a week

5. What time(s) do you typically receive deliveries (Please check all that apply.)?

Noon - 4pm

6. Based on the above question, what is the most common time frame you receive deliveries?

Noon - 4pm

7. Where do the delivery drivers typically park when they make deliveries to your business?

On-Street Parking

8. How long does it typically take to make a delivery to a business on Las Olas Boulevard?

0 - 5 minutes

9. Does your company receive waste collection services on Las Olas Boulevard?

No

10. If you answered yes to the previous question, which contractor provides your waste collection service? Please write the name of the contractor in the field below. If you are not aware please leave this question blank.

Not answered

Page 2

11. Do you operate valet service on Las Olas Boulevard?

No (Please skip to the next page.)

12. Does your staff operate valet parking or do you hire a valet service provider?

We operate the valet service ourselves.

13. Does your valet service along Las Olas Boulevard use:

Not answered

14. Which days do you offer valet service (Please check all that apply.)?

Not answered

15. What time of day do you offer valet service?

Not answered

16. On a moderately busy day, about how many cars use your valet service at a time?

Not answered

17. Where do Uber/Lyft drivers and other ride share providers stop to drop off your clients?

Not answered

Page 3

18. Please share any comments, questions, or concerns you may have. If you would like someone to follow up with you, please make sure to provide your contact information in your response.

Not answered

Thank you,
City of Fort Lauderdale, FL

This is an automated message generated by the Vision Content Management System™. Please do not reply directly to this email.

Jessica Mackey

From: system@fortlauderdale.gov
Sent: Monday, May 22, 2017 2:43 PM
To: EVanZandt@fortlauderdale.gov; CPrince@fortlauderdale.gov;
mdamiano@fortlauderdale.gov; Jessica Mackey; W.T. Bowman
Subject: New Las Olas Boulevard Parking and Deliveries Study Response

A new entry to a form/survey has been submitted.

Form Name: Las Olas Boulevard Parking and Deliveries Study
Date & Time: May 22, 2017 2:42 PM
Response #: 8
Submitter ID: 7186
IP address: 75.18.115.189
Time to complete: 6 min. , 18 sec.

Survey Details

Page 1

1. Business Information

Business Name	leigh robinson kerr and assoc.,inc.	Your Name:	leigh r kerr
----------------------	--	-------------------	--------------

2. Do you receive deliveries on Las Olas Boulevard?

Yes

3. What type(s) of deliveries do you commonly receive (Please check all that apply.)?

Parcel Services (UPS, FedEx, DHL, etc.)

4. How often do you receive deliveries on Las Olas Boulevard?

A few times a week

5. What time(s) do you typically receive deliveries (Please check all that apply.)?

9am - Noon

Noon - 4pm

6. Based on the above question, what is the most common time frame you receive deliveries?

9am - Noon

7. Where do the delivery drivers typically park when they make deliveries to your business?

Other (Please explain)

alley

8. How long does it typically take to make a delivery to a business on Las Olas Boulevard?

0 - 5 minutes

9. Does your company receive waste collection services on Las Olas Boulevard?

No

10. If you answered yes to the previous question, which contractor provides your waste collection service? Please write the name of the contractor in the field below. If you are not aware please leave this question blank.

Not answered

Page 2

11. Do you operate valet service on Las Olas Boulevard?

No (Please skip to the next page.)

12. Does your staff operate valet parking or do you hire a valet service provider?

Not answered

13. Does your valet service along Las Olas Boulevard use:

Not answered

14. Which days do you offer valet service (Please check all that apply.)?

Not answered

15. What time of day do you offer valet service?

Not answered

16. On a moderately busy day, about how many cars use your valet service at a time?

Not answered

17. Where do Uber/Lyft drivers and other ride share providers stop to drop off your clients?

Not answered

Page 3

18. Please share any comments, questions, or concerns you may have. If you would like someone to follow up with you, please make sure to provide your contact information in your response.

FEDEX folks always nice, sometimes UPS can have attitude (speaking to when they stop in alley) but what do i know only been here 35 years.
Cheers.

Thank you,
City of Fort Lauderdale, FL

This is an automated message generated by the Vision Content Management System™. Please do not reply directly to this email.

Jessica Mackey

From: system@fortlauderdale.gov
Sent: Monday, May 22, 2017 2:40 PM
To: EVanZandt@fortlauderdale.gov; CPrince@fortlauderdale.gov;
mdamiano@fortlauderdale.gov; Jessica Mackey; W.T. Bowman
Subject: New Las Olas Boulevard Parking and Deliveries Study Response

A new entry to a form/survey has been submitted.

Form Name: Las Olas Boulevard Parking and Deliveries Study
Date & Time: May 22, 2017 2:40 PM
Response #: 7
Submitter ID: 7185
IP address: 12.247.64.82
Time to complete: 4 min. , 33 sec.

Survey Details

Page 1

1. Business Information

Business Name	Coldwell Banker Residential Real Estate	Your Name:	Richard Schultz
----------------------	--	-------------------	-----------------

2. Do you receive deliveries on Las Olas Boulevard?

Yes

3. What type(s) of deliveries do you commonly receive (Please check all that apply.)?

Parcel Services (UPS, FedEx, DHL, etc.)
 Office Supplies

4. How often do you receive deliveries on Las Olas Boulevard?

Daily

5. What time(s) do you typically receive deliveries (Please check all that apply.)?

9am - Noon
 Noon - 4pm

6. Based on the above question, what is the most common time frame you receive deliveries?

Noon - 4pm

7. Where do the delivery drivers typically park when they make deliveries to your business?

Other (Please explain)

alley behind my location

8. How long does it typically take to make a delivery to a business on Las Olas Boulevard?

5 - 10 minutes

9. Does your company receive waste collection services on Las Olas Boulevard?

No

10. If you answered yes to the previous question, which contractor provides your waste collection service? Please write the name of the contractor in the field below. If you are not aware please leave this question blank.

Not answered

Page 2

11. Do you operate valet service on Las Olas Boulevard?

No (Please skip to the next page.)

12. Does your staff operate valet parking or do you hire a valet service provider?

Not answered

13. Does your valet service along Las Olas Boulevard use:

Not answered

14. Which days do you offer valet service (Please check all that apply.)?

Not answered

15. What time of day do you offer valet service?

Not answered

16. On a moderately busy day, about how many cars use your valet service at a time?

Not answered

17. Where do Uber/Lyft drivers and other ride share providers stop to drop off your clients?

Not answered

Page 3

18. Please share any comments, questions, or concerns you may have. If you would like someone to follow up with you, please make sure to provide your contact information in your response.

Paint the street and curbs to clearly mark bus stops, loading zones, handicapped parking and no parking areas.

Thank you,
City of Fort Lauderdale, FL

This is an automated message generated by the Vision Content Management System™. Please do not reply directly to this email.

Jessica Mackey

From: system@fortlauderdale.gov
Sent: Monday, May 22, 2017 2:36 PM
To: EVanZandt@fortlauderdale.gov; CPrince@fortlauderdale.gov;
mdamiano@fortlauderdale.gov; Jessica Mackey; W.T. Bowman
Subject: New Las Olas Boulevard Parking and Deliveries Study Response

A new entry to a form/survey has been submitted.

Form Name: Las Olas Boulevard Parking and Deliveries Study
Date & Time: May 22, 2017 2:35 PM
Response #: 6
Submitter ID: 7184
IP address: 107.198.113.89
Time to complete: 4 min. , 0 sec.

Survey Details

Page 1

1. Business Information

Business Name	Seawell Smith Arts, LLC D/B/A Las Olas Fine Arts	Your Name:	Mary Ellen Longo
----------------------	---	-------------------	------------------

2. Do you receive deliveries on Las Olas Boulevard?

Yes

3. What type(s) of deliveries do you commonly receive (Please check all that apply.)?

Parcel Services (UPS, FedEx, DHL, etc.)

4. How often do you receive deliveries on Las Olas Boulevard?

A few times a year

5. What time(s) do you typically receive deliveries (Please check all that apply.)?

9am - Noon

6. Based on the above question, what is the most common time frame you receive deliveries?

9am - Noon

7. Where do the delivery drivers typically park when they make deliveries to your business?

On-Street Parking

8. How long does it typically take to make a delivery to a business on Las Olas Boulevard?

0 - 5 minutes

9. Does your company receive waste collection services on Las Olas Boulevard?

No

10. If you answered yes to the previous question, which contractor provides your waste collection service? Please write the name of the contractor in the field below. If you are not aware please leave this question blank.

Not answered

Page 2

11. Do you operate valet service on Las Olas Boulevard?

No (Please skip to the next page.)

12. Does your staff operate valet parking or do you hire a valet service provider?

Not answered

13. Does your valet service along Las Olas Boulevard use:

Not answered

14. Which days do you offer valet service (Please check all that apply.)?

Not answered

15. What time of day do you offer valet service?

Not answered

16. On a moderately busy day, about how many cars use your valet service at a time?

Not answered

17. Where do Uber/Lyft drivers and other ride share providers stop to drop off your clients?

In the parking/valet area on Las Olas Boulevard

Page 3

18. Please share any comments, questions, or concerns you may have. If you would like someone to follow up with you, please make sure to provide your contact information in your response.

701 E. Las Olas Bl

Thank you,
City of Fort Lauderdale, FL

This is an automated message generated by the Vision Content Management System™. Please do not reply directly to this email.

Jessica Mackey

From: system@fortlauderdale.gov
Sent: Monday, May 22, 2017 2:31 PM
To: EVanZandt@fortlauderdale.gov; CPrince@fortlauderdale.gov;
mdamiano@fortlauderdale.gov; Jessica Mackey; W.T. Bowman
Subject: New Las Olas Boulevard Parking and Deliveries Study Response

A new entry to a form/survey has been submitted.

Form Name: Las Olas Boulevard Parking and Deliveries Study
Date & Time: May 22, 2017 2:31 PM
Response #: 5
Submitter ID: 7183
IP address: 66.77.92.130
Time to complete: 4 min. , 13 sec.

Survey Details

Page 1

1. Business Information

Business Name Fresh Produce **Your Name:** Fresh Produce

2. Do you receive deliveries on Las Olas Boulevard?

Yes

3. What type(s) of deliveries do you commonly receive (Please check all that apply.)?

Parcel Services (UPS, FedEx, DHL, etc.)

4. How often do you receive deliveries on Las Olas Boulevard?

A few times a week

5. What time(s) do you typically receive deliveries (Please check all that apply.)?

Noon - 4pm

6. Based on the above question, what is the most common time frame you receive deliveries?

Noon - 4pm

7. Where do the delivery drivers typically park when they make deliveries to your business?

On-Street Parking

8. How long does it typically take to make a delivery to a business on Las Olas Boulevard?

5 - 10 minutes

9. Does your company receive waste collection services on Las Olas Boulevard?

No

10. If you answered yes to the previous question, which contractor provides your waste collection service? Please write the name of the contractor in the field below. If you are not aware please leave this question blank.

Not answered

Page 2

11. Do you operate valet service on Las Olas Boulevard?

No (Please skip to the next page.)

12. Does your staff operate valet parking or do you hire a valet service provider?

We operate the valet service ourselves.

13. Does your valet service along Las Olas Boulevard use:

Not answered

14. Which days do you offer valet service (Please check all that apply.)?

Not answered

15. What time of day do you offer valet service?

Not answered

16. On a moderately busy day, about how many cars use your valet service at a time?

Not answered

17. Where do Uber/Lyft drivers and other ride share providers stop to drop off your clients?

I don't know

Page 3

18. Please share any comments, questions, or concerns you may have. If you would like someone to follow up with you, please make sure to provide your contact information in your response.

Not answered

Thank you,
City of Fort Lauderdale, FL

This is an automated message generated by the Vision Content Management System™. Please do not reply directly to this email.

Jessica Mackey

From: system@fortlauderdale.gov
Sent: Monday, May 22, 2017 2:29 PM
To: EVanZandt@fortlauderdale.gov; CPrince@fortlauderdale.gov;
mdamiano@fortlauderdale.gov; Jessica Mackey; W.T. Bowman
Subject: New Las Olas Boulevard Parking and Deliveries Study Response

A new entry to a form/survey has been submitted.

Form Name: Las Olas Boulevard Parking and Deliveries Study
Date & Time: May 22, 2017 2:28 PM
Response #: 4
Submitter ID: 7182
IP address: 65.8.163.208
Time to complete: 2 min. , 43 sec.

Survey Details

Page 1

1. Business Information

Business Name Grand Central Stationery LLC **Your Name:** Rod Andreychuk

2. Do you receive deliveries on Las Olas Boulevard?

Yes

3. What type(s) of deliveries do you commonly receive (Please check all that apply.)?

Parcel Services (UPS, FedEx, DHL, etc.)

4. How often do you receive deliveries on Las Olas Boulevard?

Daily

5. What time(s) do you typically receive deliveries (Please check all that apply.)?

9am - Noon

Noon - 4pm

6. Based on the above question, what is the most common time frame you receive deliveries?

9am - Noon

7. Where do the delivery drivers typically park when they make deliveries to your business?

Travel Lane

8. How long does it typically take to make a delivery to a business on Las Olas Boulevard?

0 - 5 minutes

9. Does your company receive waste collection services on Las Olas Boulevard?

No

10. If you answered yes to the previous question, which contractor provides your waste collection service? Please write the name of the contractor in the field below. If you are not aware please leave this question blank.

Not answered

Page 2

11. Do you operate valet service on Las Olas Boulevard?

No (Please skip to the next page.)

12. Does your staff operate valet parking or do you hire a valet service provider?

Not answered

13. Does your valet service along Las Olas Boulevard use:

Not answered

14. Which days do you offer valet service (Please check all that apply.)?

Not answered

15. What time of day do you offer valet service?

Not answered

16. On a moderately busy day, about how many cars use your valet service at a time?

Not answered

17. Where do Uber/Lyft drivers and other ride share providers stop to drop off your clients?

Not answered

Page 3

18. Please share any comments, questions, or concerns you may have. If you would like someone to follow up with you, please make sure to provide your contact information in your response.

Not answered

Thank you,
City of Fort Lauderdale, FL

This is an automated message generated by the Vision Content Management System™. Please do not reply directly to this email.

Jessica Mackey

From: system@fortlauderdale.gov
Sent: Thursday, May 18, 2017 2:21 PM
To: EVanZandt@fortlauderdale.gov; CPrince@fortlauderdale.gov;
mdamiano@fortlauderdale.gov; Jessica Mackey; W.T. Bowman
Subject: New Las Olas Boulevard Parking and Deliveries Study Response

A new entry to a form/survey has been submitted.

Form Name: Las Olas Boulevard Parking and Deliveries Study
Date & Time: May 18, 2017 2:20 PM
Response #: 3
Submitter ID: 7143
IP address: 45.17.58.136
Time to complete: 12 min. , 6 sec.

Survey Details

Page 1

1. Business Information

Business Name Zola Keller **Your Name:** Ave Keller

2. Do you receive deliveries on Las Olas Boulevard?

Yes

3. What type(s) of deliveries do you commonly receive (Please check all that apply.)?

Parcel Services (UPS, FedEx, DHL, etc.)

4. How often do you receive deliveries on Las Olas Boulevard?

Daily

5. What time(s) do you typically receive deliveries (Please check all that apply.)?

Not answered

6. Based on the above question, what is the most common time frame you receive deliveries?

Noon - 4pm

7. Where do the delivery drivers typically park when they make deliveries to your business?

On-Street Parking

8. How long does it typically take to make a delivery to a business on Las Olas Boulevard?

0 - 5 minutes

9. Does your company receive waste collection services on Las Olas Boulevard?

No

10. If you answered yes to the previous question, which contractor provides your waste collection service? Please write the name of the contractor in the field below. If you are not aware please leave this question blank.

Not answered

Page 2

11. Do you operate valet service on Las Olas Boulevard?

No (Please skip to the next page.)

12. Does your staff operate valet parking or do you hire a valet service provider?

Not answered

13. Does your valet service along Las Olas Boulevard use:

Not answered

14. Which days do you offer valet service (Please check all that apply.)?

Not answered

15. What time of day do you offer valet service?

Not answered

16. On a moderately busy day, about how many cars use your valet service at a time?

Not answered

17. Where do Uber/Lyft drivers and other ride share providers stop to drop off your clients?

Not answered

Page 3

18. Please share any comments, questions, or concerns you may have. If you would like someone to follow up with you, please make sure to provide your contact information in your response.

3440 N OCEAN BLVD

Thank you,
City of Fort Lauderdale, FL

This is an automated message generated by the Vision Content Management System™. Please do not reply directly to this email.

Jessica Mackey

From: Catherine Prince <CPrince@fortlauderdale.gov>
Sent: Wednesday, May 17, 2017 5:15 PM
To: Demian Miller; Jessica Mackey; W.T. Bowman
Subject: Fwd: Short URL for Las Olas Parking and Delivery Survey

W.T.,

Please see below the link to the survey.
<https://goo.gl/wv6rSy>

Please forward to Van Pangent and Amber Van Buren to forward to their database of owners and tenants. Be sure to copy me ofcourse.

Let's get this out there asap with the note that surveys are due by Thursday, next week.

Thanks.
Catherine

Jessica Mackey

From: system@fortlauderdale.gov
Sent: Wednesday, May 17, 2017 5:10 PM
To: EVanZandt@fortlauderdale.gov; CPrince@fortlauderdale.gov;
mdamiano@fortlauderdale.gov; Jessica Mackey; W.T. Bowman
Subject: New Las Olas Boulevard Parking and Deliveries Study Response

A new entry to a form/survey has been submitted.

Form Name: Las Olas Boulevard Parking and Deliveries Study
Date & Time: May 17, 2017 5:09 PM
Response #: 2
Submitter ID: 7127
IP address: 174.228.3.210
Time to complete: 2 min. , 3 sec.

Survey Details

Page 1

1. Business Information

Business Name Catherine llc **Your Name:** Catherine

2. Do you receive deliveries on Las Olas Boulevard?

Yes

3. What type(s) of deliveries do you commonly receive (Please check all that apply.)?

Parcel Services (UPS, FedEx, DHL, etc.) Restaurant Supplies

4. How often do you receive deliveries on Las Olas Boulevard?

Several times a day

5. What time(s) do you typically receive deliveries (Please check all that apply.)?

After 7pm

6. Based on the above question, what is the most common time frame you receive deliveries?

After 7pm

7. Where do the delivery drivers typically park when they make deliveries to your business?

Travel Lane

8. How long does it typically take to make a delivery to a business on Las Olas Boulevard?

10 - 15 minutes

9. Does your company receive waste collection services on Las Olas Boulevard?

Yes

10. If you answered yes to the previous question, which contractor provides your waste collection service? Please write the name of the contractor in the field below. If you are not aware please leave this question blank.

Waste management inc

Page 2

11. Do you operate valet service on Las Olas Boulevard?

Yes

12. Does your staff operate valet parking or do you hire a valet service provider?

We hire a valet service provider. (Please provide the company name and contact information.)

Valet Inc

13. Does your valet service along Las Olas Boulevard use:

On-Street Parking

14. Which days do you offer valet service (Please check all that apply.)?

Monday

15. What time of day do you offer valet service?

Other (Please specify)

Weekends only

16. On a moderately busy day, about how many cars use your valet service at a time?

10

17. Where do Uber/Lyft drivers and other ride share providers stop to drop off your clients?

(o) In the travel lane on Las Olas Boulevard

Page 3

18. Please share any comments, questions, or concerns you may have. If you would like someone to follow up with you, please make sure to provide your contact information in your response.

Not answered

Thank you,
City of Fort Lauderdale, FL

This is an automated message generated by the Vision Content Management System™. Please do not reply directly to this email.

Jessica Mackey

From: system@fortlauderdale.gov
Sent: Wednesday, May 17, 2017 3:16 PM
To: EVanZandt@fortlauderdale.gov; CPrince@fortlauderdale.gov;
mdamiano@fortlauderdale.gov; Jessica Mackey; W.T. Bowman
Subject: New Las Olas Boulevard Parking and Deliveries Study Response

A new entry to a form/survey has been submitted.

Form Name: Las Olas Boulevard Parking and Deliveries Study
Date & Time: May 17, 2017 3:16 PM
Response #: 1
Submitter ID: 7125
IP address: 10.101.100.32
Time to complete: 2 min. , 50 sec.

Survey Details

Page 1

1. Business Information

Business Name TEST **Your Name:** Test

2. Do you receive deliveries on Las Olas Boulevard?

No (Please skip to the next page.)

3. What type(s) of deliveries do you commonly receive (Please check all that apply.)?

Parcel Services (UPS, FedEx, DHL, etc.) Restaurant Supplies
 Office Supplies

4. How often do you receive deliveries on Las Olas Boulevard?

A few times a week

5. What time(s) do you typically receive deliveries (Please check all that apply.)?

Before 7am
 7am - 9am
 9am - Noon
 Noon - 4pm
 After 7pm

6. Based on the above question, what is the most common time frame you receive deliveries?

Noon - 4pm

7. Where do the delivery drivers typically park when they make deliveries to your business?

On-Street Parking

8. How long does it typically take to make a delivery to a business on Las Olas Boulevard?

More than 15 minutes

9. Does your company receive waste collection services on Las Olas Boulevard?

Yes

10. If you answered yes to the previous question, which contractor provides your waste collection service? Please write the name of the contractor in the field below. If you are not aware please leave this question blank.

waste management

Page 2

11. Do you operate valet service on Las Olas Boulevard?

Yes

12. Does your staff operate valet parking or do you hire a valet service provider?

We operate the valet service ourselves.

13. Does your valet service along Las Olas Boulevard use:

Other (Please specify)

parking garage (is which one important? should this a stand-alone choice?)

14. Which days do you offer valet service (Please check all that apply.)?

Monday

Tuesday

Wednesday

Thursday

Friday

Saturday

Sunday

15. What time of day do you offer valet service?

At Night (After 7pm)

16. On a moderately busy day, about how many cars use your valet service at a time?

100

17. Where do Uber/Lyft drivers and other ride share providers stop to drop off your clients?

(o) In the travel lane on Las Olas Boulevard

Page 3

18. Please share any comments, questions, or concerns you may have. If you would like someone to follow up with you, please make sure to provide your contact information in your response.

THIS IS A TEST ENTRY ONLY

Thank you,
City of Fort Lauderdale, FL

This is an automated message generated by the Vision Content Management System™. Please do not reply directly to this email.