



DEPARTMENT OF SUSTAINABLE DEVELOPMENT – LANDSCAPING

FENCE/WALLS SAMPLE LANDSCAPE PLAN

Rev: 1 | Revision Date: 8/24/2018 | Print Date: 7/31/2018 | I.D. Number: SLPPFW

Residential Districts

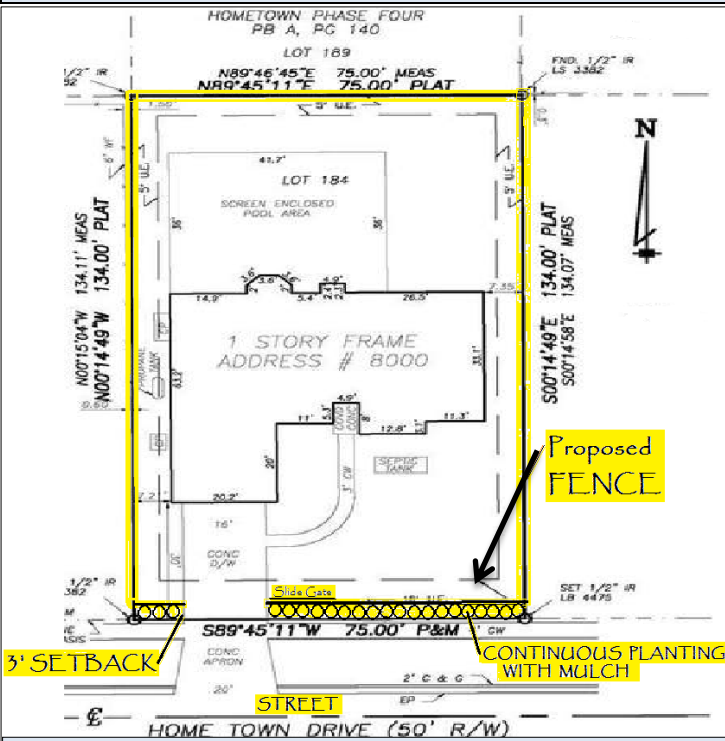
As per ULDR Section 47-19.5, the street setback for a fence or wall shall depend on the height and percentage of transparency. When a fence or wall facing a street requires a setback, a continuous planting is required within that setback. Usually this planting area is 3 or more feet from the property line facing the street, and is installed with shrubs and/or groundcover and mulch.

Use this **SAMPLE PLAN WITH NOTES** and **CHECKLIST** ✓ below as a reference for what is needed to be drawn on both the Job Copy and File Copy plan sets submitted with permit application.

This **SAMPLE ILLUSTRATION** is a rendering to help show the purpose and intent of the landscape regulations for fences/walls in Residential Districts.

SAMPLE PLAN WITH NOTES

SAMPLE ILLUSTRATION



SUGGESTED SPECIES FOR CONTINUOUS PLANTING:

SHRUBS: Firebush, Cocoplum, Clusia, Gamma Grass, Muhly Grass, Shore Juniper, Coontie, Leather Fern, Jamaican Caper, Wax Myrtle, Wild Coffee, Necklacepod, Sea Lavendar, Silver Buttonwood, etc.

GROUND COVER: Golden Creeper, Perennial Peanut, Creeping Juniper, Flax Lily, Liriope, etc

NOTES: Proposed planting will be Cocoplum shrubs planted at 2 feet tall and spaced 2 feet apart. Continuous planting will be mulched with and appropriate organic material to a minimum of two (2) inches.

Checklist:

- ✓ **DRAW LOCATION OF PROPOSED FENCE/WALL AND GATES**
- ✓ **NOTE THE SETBACK FROM FENCE/WALL FACING STREET**
- ✓ **NOTE THE CONTINUOUS PLANTING WITH MULCH**
- ✓ **STATE WHAT SPECIES WILL BE** (Shrubs to be 2 feet tall planted 2 feet apart. Groundcover to be 6 inches tall planted 6 inches apart, Planting area to be mulched with appropriate organic material)



DEPARTMENT OF SUSTAINABLE DEVELOPMENT – LANDSCAPING

FENCE/WALLS SAMPLE LANDSCAPE PLAN

Rev: 1 | Revision Date: 8/24/2018 | Print Date: 7/31/2018 | I.D. Number: SLPPFW

Non-Residential Districts

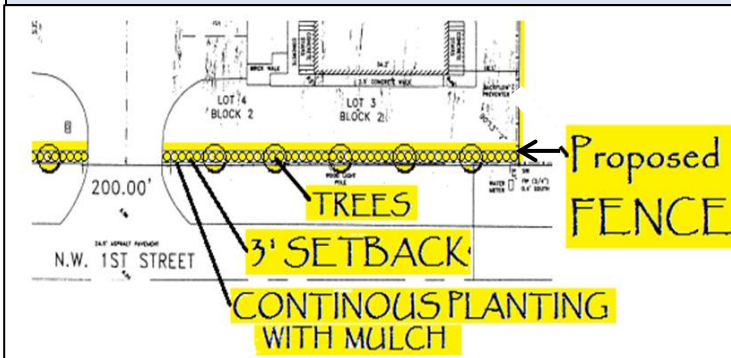
As per ULDR Section 47-19.5, the street setback for a fence or wall shall depend on the height and percentage of transparency. When a fence or wall facing a street requires a setback, a continuous planting is required within that setback. Usually this planting area is 3 or more feet from the property line facing the street, and is required to be planted with trees, shrubs and/or groundcover, and mulch.

Use this **SAMPLE PLAN WITH NOTES** and **CHECKLIST** ✓ below as a reference for what is needed to be drawn on both the Job Copy and File Copy plan sets submitted with permit application.

This **SAMPLE ILLUSTRATION** is a rendering to help show the purpose and intent of the landscape regulations for fences/walls in Non-Residential Districts.

SAMPLE PLAN WITH NOTES

SAMPLE ILLUSTRATIONS



NOTES: Continuous planting will be Jatropha Trees installed at 8' tall spaced 20' apart, Firebush shrubs planted at 2 feet tall and spaced 2 feet apart. Continuous planting will be mulched with and appropriate organic material to a minimum of two (2) inches.

Checklist:

- ✓ **DRAW LOCATION OF PROPOSED FENCE/WALL AND GATES**
- ✓ **NOTE THE SETBACK FROM FENCE/WALL FACING STREET**
- ✓ **NOTE THE CONTINUOUS PLANTING WITH MULCH**
- ✓ **STATE WHAT SPECIES WILL BE** (Ornamental Trees to be 8' tall and planted 20' apart, Ornamental Palms to have 8' clear trunk and planted 20' apart, Shrubs to be 2 feet tall planted 2 feet apart, Groundcover to be 6 inches tall planted 6 inches apart, Planting area to be mulched with appropriate organic material)

SUGGESTED SPECIES FOR CONTINUOUS PLANTING:

SHRUBS: Firebush, Cocoplum, Clusia, Gamma Grass, Muhly Grass, Shore Juniper, Coontie, Leather Fern, Jamaican Caper, Wax Myrtle, Wild Coffee, Necklacepod, Sea Lavendar, Silver Buttonwood, etc.

GROUND COVER: Golden Creeper, Perennial Peanut, Creeping Juniper, Flax Lily, Liriope, etc.

ORNAMENTAL TREES: Cinnamon Bark, White Geiger, Eugenia spp, Ligustrum, Wax Myrtle, Silver Buttonwood, Orange Geiger, Jatropha, Powderpuff, Hibiscus, Crepe Myrtle, etc.

ORNAMENTAL PALMS: Thatch, Pindo, Carpenteria, Veitchia, Adonidia, etc.

