



CITY OF FORT LAUDERDALE



# *CITY OF FORT LAUDERDALE PARKS ADVISORY BOARD BOND UPDATE*

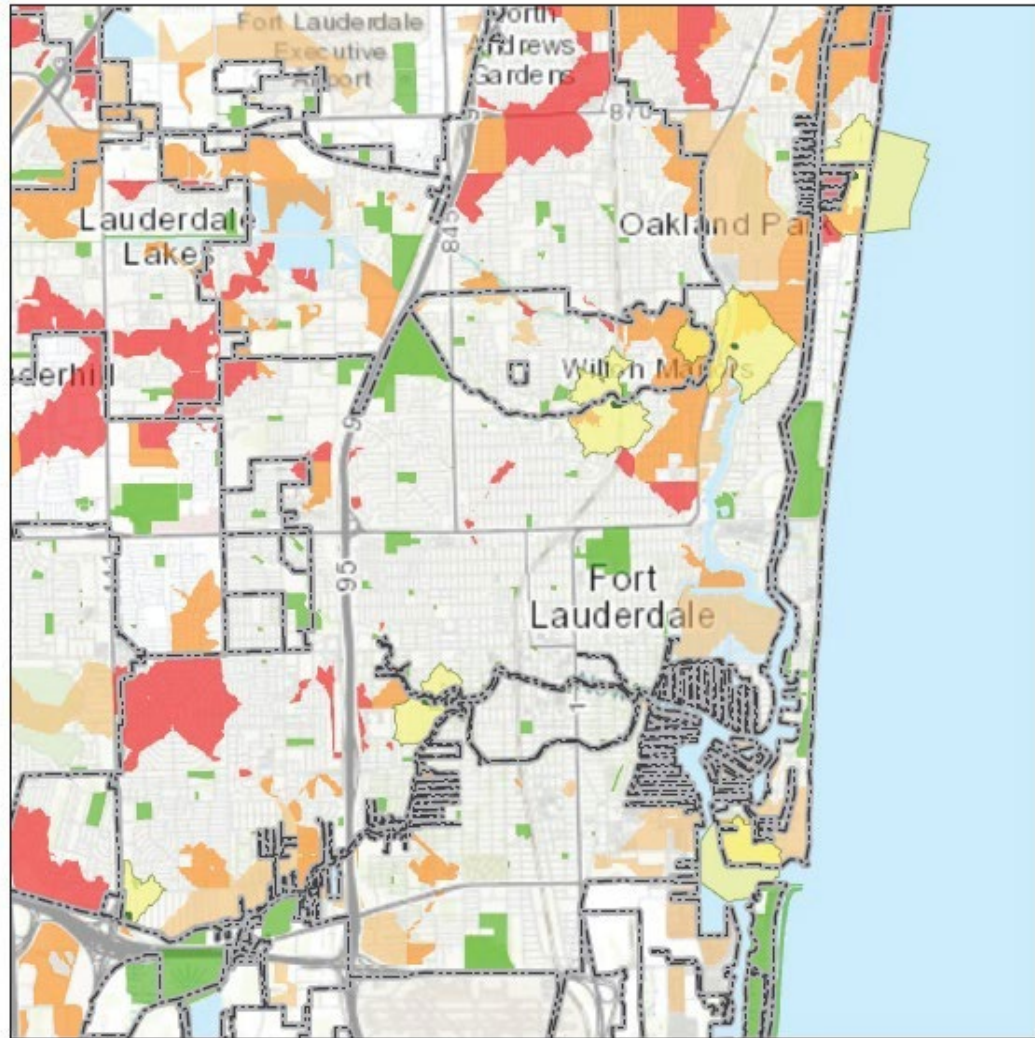
*August 2020*



# FORT LAUDERDALE AREAS OF NEED

## Legend

- City Boundary
- Project Areas
- Project Service Areas
- Parks
- Park Need**
  - High
  - Moderate To High
  - Moderate

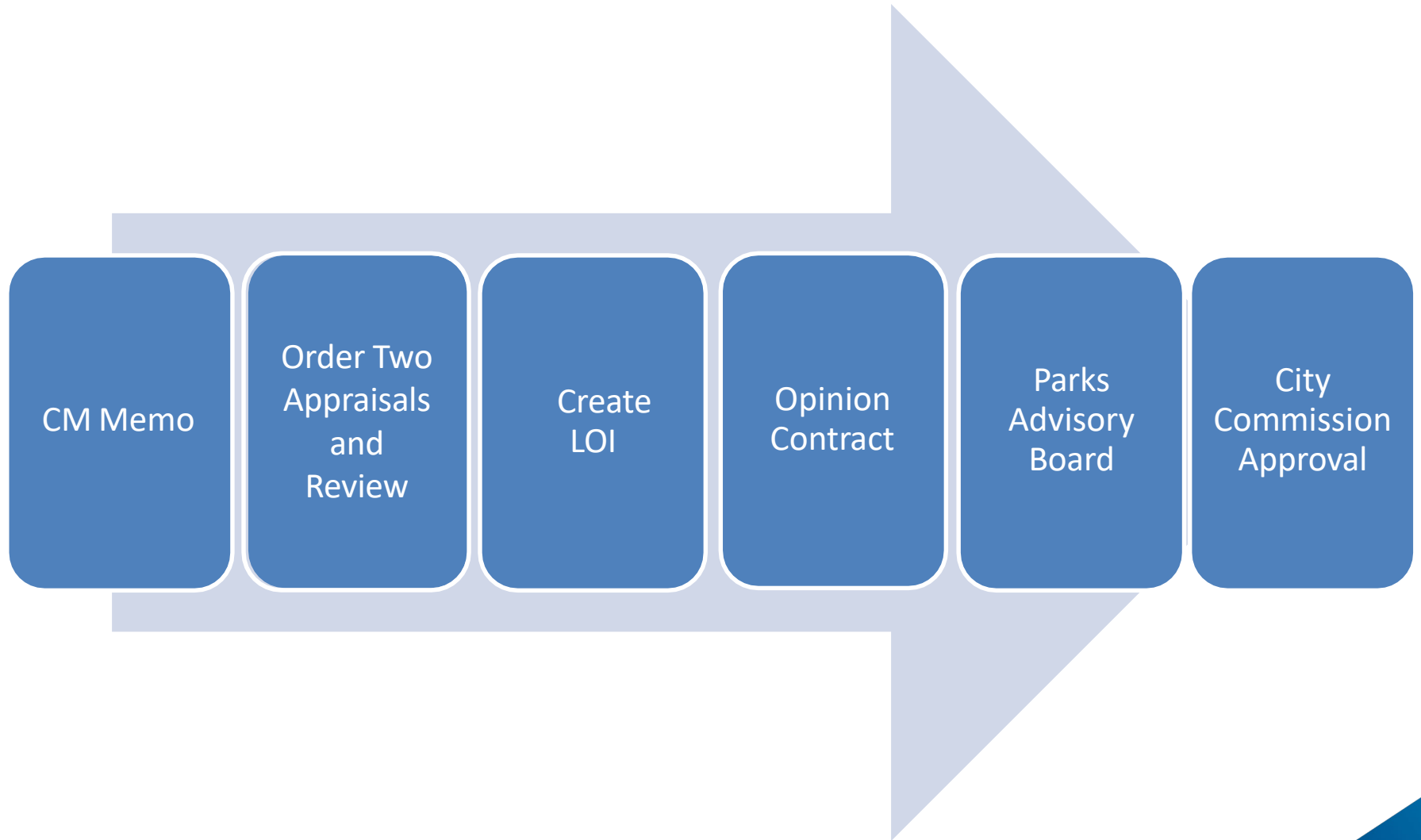


### TOP FIVE (5) AREAS

- 1- Oakland Park (N) and Commercial Blvd (S)
- 2- Melrose Park
- 3 - Sunrise Blvd (N) and Oakland Park (S)
- 4 - Commercial Blvd (N) and McNab Rd (S)
- 5 - Palm Aire

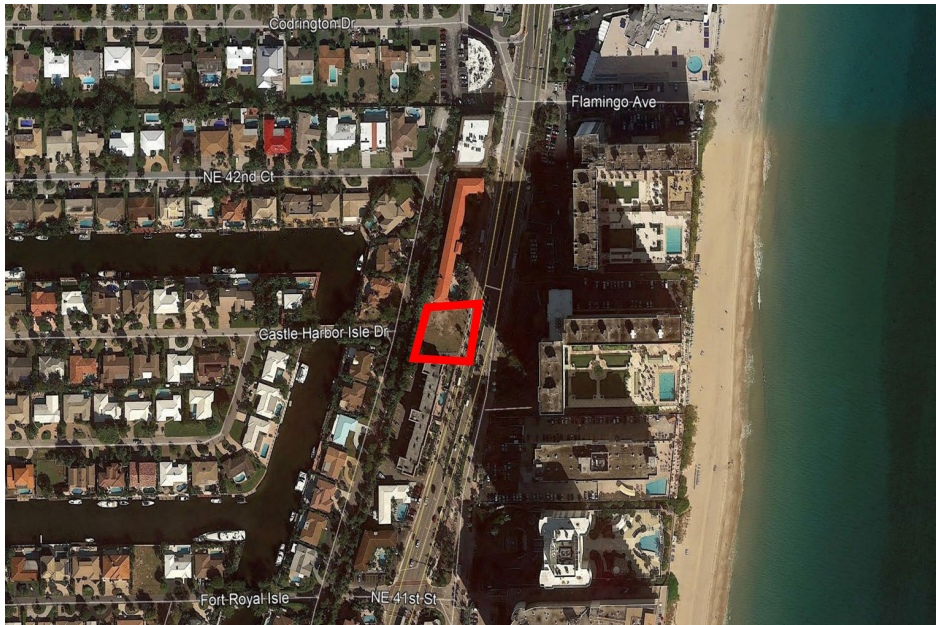
This report was created on August 19, 2019 using the ParkServe® interactive mapping site. It is for informational purposes only. The providers of this report disclaim any and all warranties, express or implied, including fitness for a particular purpose or merchantability, and make no representation that the report is complete, accurate, or error free. Use and reliance on this report is at the sole risk of the party using same.

# PARKS ACQUISITION PROCESS

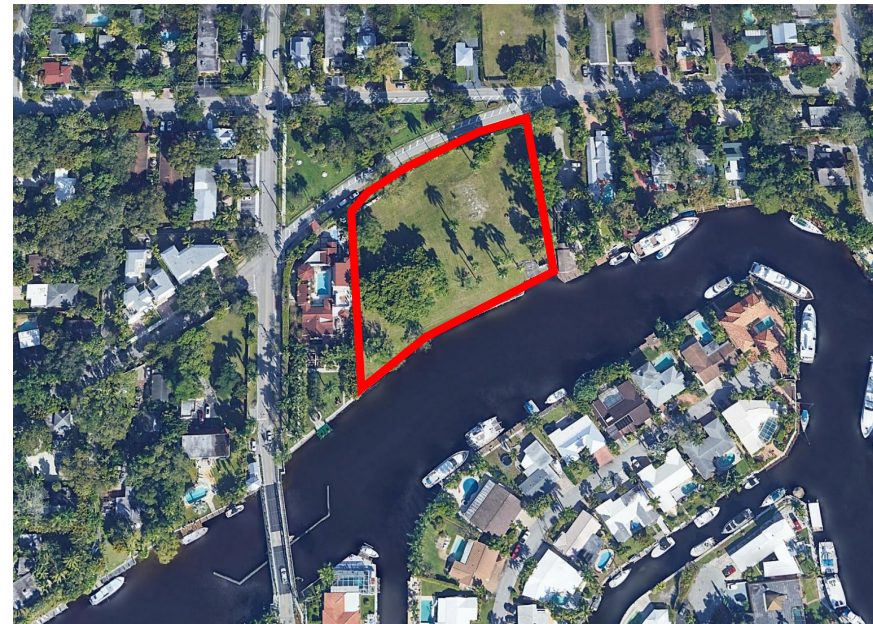


# STATUS UPDATE

4201 N Ocean Blvd - District 1  
Closed 4/28/20



▲  
1016 Waverly Road - District 2  
7/7/20 City Commission did not approve,  
needed more information on use  
8/18/20 City Commission agreed to revisit  
potential acquisition

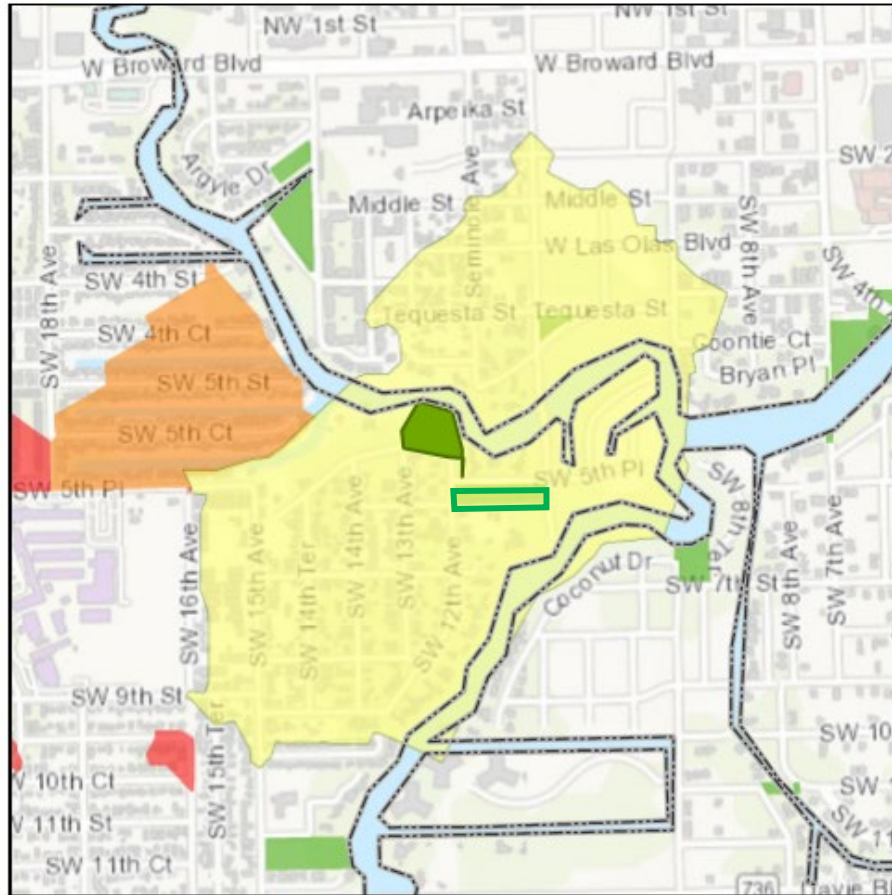


# PROPOSED PARK ACQUISITION #2

SW 5<sup>th</sup> Court and SW 12<sup>th</sup> Avenue- District 4 - Riverside Park

**Legend**

-  City Boundary
-  Project Area
-  Project Service Area
-  Parks
- Park Need**
-  High
-  Moderate To High
-  Moderate



City Statistics	Existing	New
City: Fort Lauderdale, FL		
Park Acres	958	
Total Population	177,973	
Served Population	137,120	137,120
Percent Served	77.0%	77.0%

# PROPOSED PARK ACQUISITION #2

SW 5<sup>th</sup> Court and SW 12<sup>th</sup> Avenue - District 4

Size: 2.16 Acres

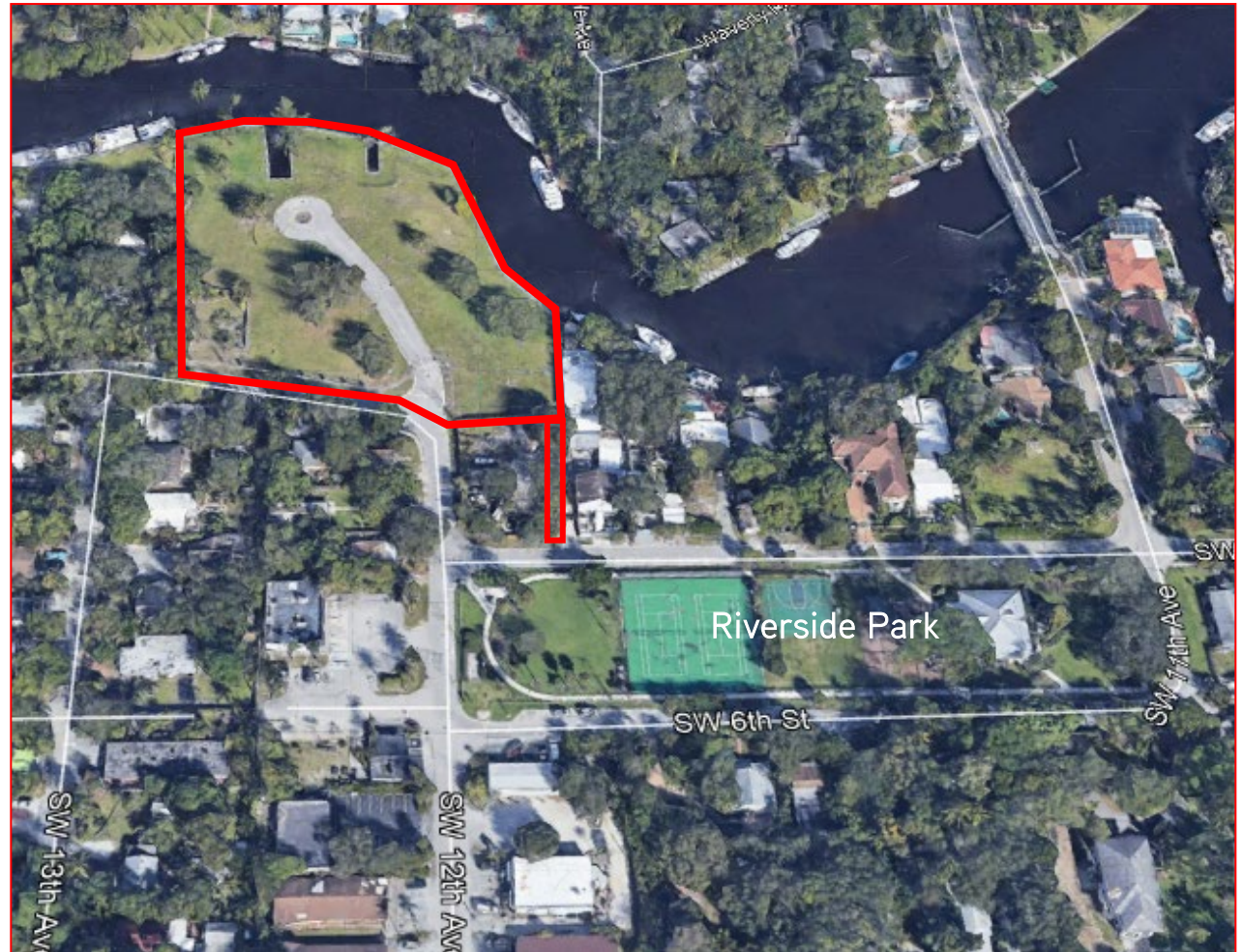
Riverside Park Neighborhood



# PROPOSED PARK ACQUISITION #2

SW 5<sup>th</sup> Court and SW 12<sup>th</sup> Avenue- District 4- Riverside Park

- Size: 2.16 Acres
- Not Listed for Sale
- Negotiated Price: \$4.050M
- Seller's original counter \$5.1M
- Expand Riverside Park/Waterfront



## PROGRESS/GOAL

- Closed on the first park-4201 N Ocean Blvd, District 1- April 28, 2020
- Continuing to gather input and review emails from the community on potential properties
- Ongoing meetings with City Staff, Parks Department, and Commissioners to discuss viability of potential locations for parks
- Working list of properties that fall within the area of need
- Phased process based on willing property owners and price
- *Focus on District 3, Melrose Park*
- The City's goal is for all residents to be within a 10-minute walk to a park. Using Trust for Public Land, ESRI, we can track how a new park effects the accessibility for residents to parks.