



LAUDERTRAC

RESILIENCY UPDATE FORT LAUDERDALE

Tracking Progress on Commission Priorities for 2021



May 2021

CREATING A STRONGER COMMUNITY

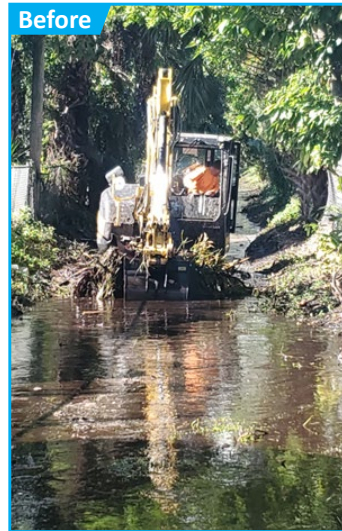
A Tale of Two Neighborhoods during the Year of Extreme Rainfall



*Melrose Park Drainage Culvert:
Clogged with Tropical Storm
Eta sediments*



*Melrose Park Drainage Culvert:
Cleaned & Restored*



*Melrose Park ditch being restored
back to original depth and width*



*Melrose Park ditch restored back to
permitted condition*

Part of creating a resilient community is how we plan for and respond to stressful events. 2020 not only delivered a pandemic, but also a season of extreme rain. Severe rainfall throughout the months of October and November 2020 resulted in elevated groundwater tables as the rainwater could no longer be quickly absorbed. Subsequent rainfall events and seasonal high tides caused widespread flooding in several neighborhoods including Melrose Park and Melrose Manors. The City responded to the crises by deploying stormwater pump-trucks to remove standing water on roadways and provide relief to the neighbors experiencing flooded yards and homes. When Tropical Storm Eta hit on November 7-8, 2020, it produced nearly ten (10) inches of rain that had literally nowhere to go. As a result, 15 City neighborhoods were flooded for several days. Fire and Police departments provided immediate aid, and the City engaged a fleet of pump-trucks again to remove flood waters in Melrose Manors, Melrose Park and other impacted neighborhoods. Concurrently, the City's emergency response contractors removed debris silt and other obstructions from roadways, sidewalks, catch basins, swales and pipes. The entire drainage system in the Melrose area has been restored such that stormwater runoff can now flow unimpeded to the final discharge point in the North Fork of New River.

Presently, Melrose Manors does not have any meaningful drainage system. To address the flooding issue in this neighborhood, the City has engaged a consultant to begin modeling and designing the stormwater infrastructure improvements in Melrose Manors. The City is also exploring funding mechanisms for this neighborhood-wide project, currently estimated at \$30,000,000. The design and permitting of the Melrose Manors stormwater infrastructure system is expected to take approximately two years to complete, followed by a three-year construction period. While we are hopeful the City does not experience 32 inches of rain in a future 40-day period, the stormwater investments in Melrose Manors will make the community more resilient to flooding caused by extreme rainfall events.

As we enter the 2021 wet season, the Melrose Park drainage system should perform much better than 2020. Fort Lauderdale would like to thank the City of Lauderhill Public Works staff and the Lauderdale West, Melrose Manors and Melrose Park Homeowner Associations who collaborated in the successful restoration efforts. Please report debris and trash dumping into the Melrose Park drainage ditch to the 24/7 Customer Service hot line at (954) 828-8000.