



# LAUDERTRAC

## RESILIENCY UPDATE FORT LAUDERDALE

Tracking Progress on Commission Priorities for 2021



June 2021

## CREATING A STRONGER COMMUNITY

### Our Stormwater Master Plan is Underway

In January 2018, the City completed the Stormwater Master Plan (SWMP). The SWMP was the culmination of intense infrastructure data collection, generation of fine scale elevation data, cutting edge hydrologic modeling and extensive public outreach. As a result, stormwater improvements were designed for seven neighborhoods impacted most by rainfall and coastal tidal flooding. The seven neighborhoods are: Historic Dorsey Riverbend, Durrs, Edgewood, Victoria Park, Progresso Village, River Oaks and Southeast Isles which includes all the isles north and south of E. Las Olas Boulevard as well as portions of Rio Vista.

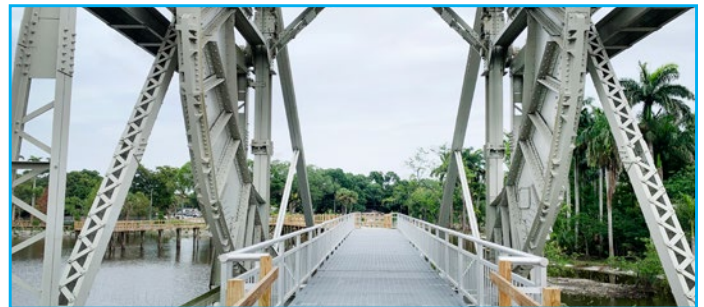
Over the last 18 months, the City worked to put critical elements in place to move forward with this \$200 million effort. Last summer, the City Commission adopted a new Stormwater rate to generate the revenues necessary to support financing a Stormwater Bond. The City Manager began to set aside \$70 million to apply for the required permits for SWMP implementation and engaged a contractor to begin construction in the River Oaks and Edgewood neighborhoods in September 2021. The City's Finance Department applied for \$98 million in low interest loans through the Water Infrastructure Finance and Innovation Act, a federal program run through the Environmental Protection Agency. Concurrently, the Finance Department is working toward issuing a bond for the remaining funds. The City is also the recipient of a \$10.5 million Rebuild Florida Grant from the Florida Department of Economic Opportunity which will support stormwater improvements in the Durrs neighborhood.

In addition to the activity on the SWMP, the City is working on implementing smaller operational and Community Investment Plan projects to improve our stormwater management system. The ongoing projects include replacing the Cordova Road and Isle of Palm seawalls, building the River Oaks Stormwater Preserve Park, installing tidal valves in Sailboat Bend, rehabilitating drainage swales in the Melrose neighborhoods, repairing stormwater pipes on Bayview Drive and adding back-up generators to the two downtown storm stations.

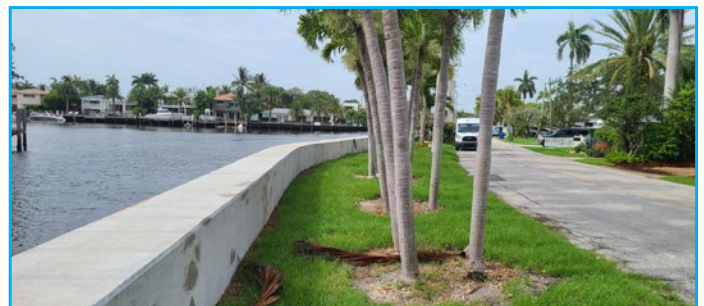
Every day, the City is working tirelessly to reduce the frequency, intensity and duration of flooding throughout the Fort Lauderdale community.



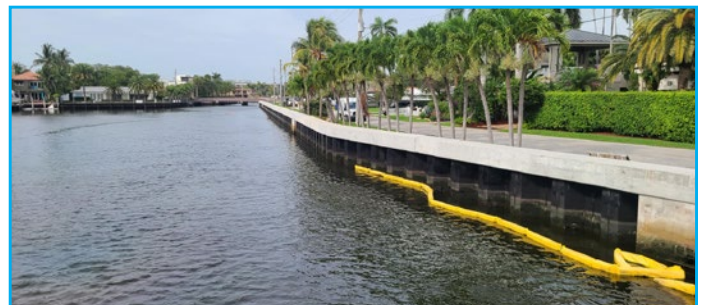
*CSX Bridge and elevated walkway at River Oaks Preserve*



*1928 CSX Rail Bridge at River Oaks Preserves*



*Cordova Seawall swale*



*Cordova Seawall looking south*