



Agenda

Education Advisory Board Meeting Thursday, August 19, 2021 at 6:30 PM

100 N. Andrews Avenue Fort Lauderdale, FL 33316
8th Floor Conference Room

- **Welcome**
- **Attendance and Roll Call**
- **Board Chair's Minute**
- **Old Business**
 - **Strategic Initiatives**
 - **Joint Use Parks:** Review Proposal for Parks, Recreation & Beaches Advisory Board
 - **Early Learning Initiative:** The Bezos Academy Partnership Opportunity
- **New Business**
 - Asset Based Community Development Project Overview
 - Summer Enrichment Program Recap
 - Stranahan High School SMART Bond Update
- **Approval of Last Meeting Minutes:** May 20, 2021
- **Closing**

Purpose: Advise the City Commission on issues relating to educational matters which will impact the quality of education for City residents, or which will impact education facilities located within the City.

Note: Two or more Fort Lauderdale City Commissioners and/or Advisory Board members may be present at this meeting. Two or more Elected Officials from the Broward County School Board may also be in attendance. If any person decides to appeal any decision made with respect to any matter considered at this public meeting or hearing, he/she will need to ensure that a verbatim record of the proceedings is made, which record includes the testimony and evidence upon which the appeal is to be based. If you desire auxiliary services to assist in viewing or hearing the meetings, or reading meeting agendas and minutes, please contact the City Clerk's Office at 954-828-5002 and arrangements will be made to provide these services for you.

For More Information: <http://www.fortlauderdale.gov/clerk/boards.htm>
<http://www.fortlauderdale.gov/documents/agenda.htm>



CITY OF
FORT LAUDERDALE



Joint Use Parks

Proposal



CITY OF FORT LAUDERDALE



Broward County
Public Schools



**Project
Proposal**

JOINT USE PARKS INITIATIVE

**EDUCATION ADVISORY BOARD
AUGUST 19, 2021**

Partnership between City of Fort Lauderdale & Broward County Public Schools

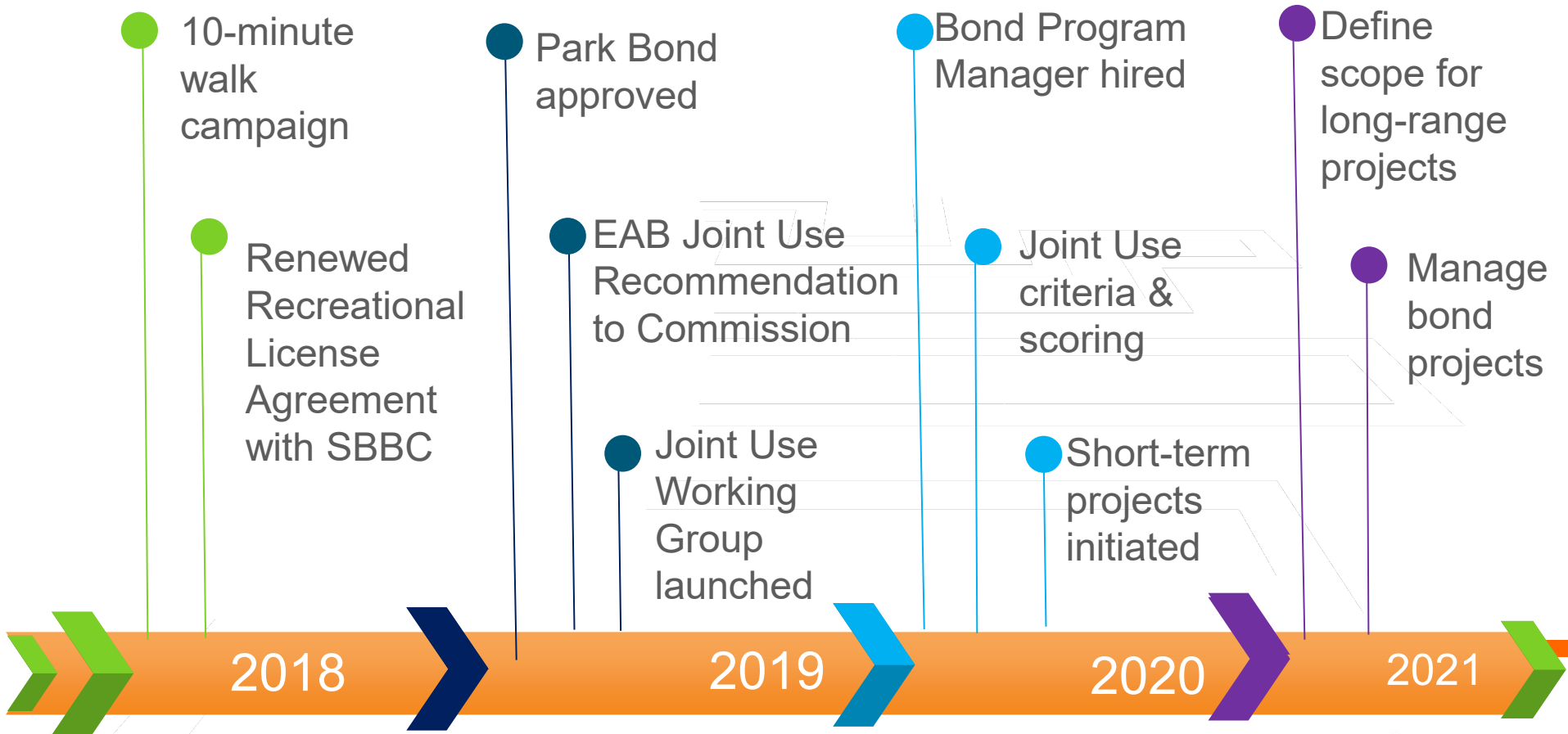




“ Promote the joint community and school use of all publicly-funded parks and recreation areas in the City of Fort Lauderdale ”

STRATEGIC INITIATIVE

TIMELINE



RECREATIONAL LICENSE AGREEMENT



Recreational License Agreement

City of Fort Lauderdale and School Board of Broward County

- Established in 1978
- Renewed in 2018 for 25 years
- Allows for resource sharing between school and community
- Safety requirements established
- Operational responsibilities defined
- 18 schools included; additional fencing required to make certain sites available

VOTER APPROVED PARKS BOND

\$200 Million Park Bond

Proposed project list based on Parks and Recreation Master Plan.



Joint Use
Parks



City Parks



Acquisition

Proposed projects include existing and new joint use parks based on Master Plan.

Improvements to City parks and community center. Signature project in each Commission District.

Acquisition of new green space.


GUIDING PRINCIPLES

Vision: A city where joint-use parks are established across Fort Lauderdale

Objectives

- Build community
- Demonstrate smart government

Approach:

- Make decisions so all parks and recreation resources are aligned to build community
 - City-wide plan and execution versus individual approach
 - Geographic equity
 - Transparent and well-informed process
 - Speed of execution
- 



PRIORITIZING NEED & DEFINING PROJECT SCOPE

Completed

Master Plan/Parks Bond Project List



EAB & PRBA Establish Guiding Principles for initiative



Joint Use Working Group



Public Input Meetings



Next Steps



EAB Joint Use Proposal Review

Summer, 2021



PRBA Joint Use Proposal Review

Summer/Fall, 2021



Public Hearings

TBD

Note: Existing joint use parks will go through the Program Manager Task Order Process.

CRITERIA – TO MEASURE NEED, VIABILITY & SUCCESS

Developed and validated with input from principals

Scoring intended to help prioritize “win-win” projects for school and community

Accounts for changes in need since Parks Master Plan

PROJECT CRITERIA & ASSESSMENT

Community Need - Is there Community Need for a recreation area?:

No City park within a "10 minute walk" per Fort Lauderdale spec? (1/2 mile from school)

Walkability challenges to nearby park (need to cross major highways, busy roads, water, other barrier requiring one to drive)

School site offers amenities not offered at nearby parks

Low quality and diversity of amenities in community

SUB-SCORE: Community Need

Feasibility of School Site Design

Direct access from street to the recreation area

Required fencing does not pose negatives to school design specs

Site offers large lot, corner lot, and/or unique features

SUB-SCORE: Feasibility of School Site Design

Benefits to School Program and/or Design (not scored if low physical site viability)

Project is in a high visibility area that adds to the overall aesthetics and curb appeal of the school

Project adds to the school's educational program/theme (examples include outdoor learning labs, marine science collection areas, educational signage, etc)

Project expands recreational opportunities for students

SUB-SCORE: Benefits to School Program & Design

ASSESSMENT OF CRITERIA BASED ON NEEDS & FEASIBILITY

INPUT MEETINGS

- School sites visits
- Asset inventory
- Principal meetings
- Public meetings
- School Board meetings
- Monthly updates to
Education Advisory Board



Executive Summary

The Joint Use Working Group **recommends 15 schools for parks bond funding** based on the joint use scoring methodology and public input.

The budget proposal stays within the \$10,948,700 listed in the parks bond for joint use parks. **Scope of work adjustments** are proposed **based on the joint use scoring methodology, adjusted community need** since 2016 master plan **and in coordination with the School Board of Broward County.**

The proposal **increases the number of joint use parks** in the City of Fort Lauderdale and expands project scope in areas of highest need to promote **geographic equity.**



Proposed New Projects

Projects not contemplated in initial parks bond list

School	Commission District	Budget	Rationale
Thurgood Marshall Elementary	3	\$400,000	<ul style="list-style-type: none">Powerline road and Sunrise boulevard create walkability challenges to area parks
Rock Island Elementary	3	\$275,000	<ul style="list-style-type: none">Creates community access to playground and large green space. Also benefits Dillard Elementary families due to school zoning
Harbordale Elementary	4	\$275,000	<ul style="list-style-type: none">Increased community demand for park space
Dillard Elementary	3	\$100,000	<ul style="list-style-type: none">Creates community access to tennis courts
<i>Sub-Total</i>		<i>\$1,050,000</i>	<i>Increase access to parks across City</i>



Proposed Increased Project Scope

Projects included in initial parks bond list. Proposed increase due to need.

School	Commission District	Increase	Total Budget	Rationale
North Fork Elementary	3	\$300,000	\$785,000	<ul style="list-style-type: none">Situated in park desertExpansive property and unique water access create great potential
Stephen Foster Elementary	4	\$100,000	\$475,000	<ul style="list-style-type: none">Situated in park desertNestled in neighborhood; anticipated high-use
Westwood Heights Elementary	3	\$200,000	\$475,000	<ul style="list-style-type: none">High community demandCreates community access to basketball courts, playground and other amenities
Stranahan High School	4	\$250,000	\$350,000	<ul style="list-style-type: none">High community demand for recreational amenitiesExpansive property creates great potential
<i>Sub-Total</i>		<i>\$850,000</i>	<i>\$2,085,000</i>	<i>Expands scope in park deserts/high need areas</i>

Proposed Maintenance of Project Scope

No change from initial project list proposed.

School	Commission District	Total Budget	Rationale
Floranada Elementary	1	\$783,000	<ul style="list-style-type: none">• Supports continued high usage for organized athletics
Lauderdale Manors	3	\$1,856,000	<ul style="list-style-type: none">• Supports continued high usage of pool and community center
Sunset Park	3	\$1,029,000	<ul style="list-style-type: none">• Supports continued high-usage of recreational spaces
Virginia Shuman Young Elementary	2	\$375,000	<ul style="list-style-type: none">• Repurposing pavilion and lighting supports community request for shade cover
<i>Sub-Total</i>		<i>\$4,043,000</i>	<i>Initial project list aligned to need</i>

Proposed Decrease of Project Scope

Proposed decrease from initial project list due to need and opportunity to expand portfolio within budget allocated.

School	Commission District	Decrease	Total Budget	Rationale
Croissant Park	4	(\$200,000)	\$2,420,000	<ul style="list-style-type: none">• Lesser need for separate bathroom when competitive swim returns to Swimming Hall of Fame; current bathroom access meets need
Sunrise Middle	2	(\$725,000)	\$1,000,000	<ul style="list-style-type: none">• Lower need with addition of Bennett playground in 2020 & upgraded turf fields at Holiday Park• Space cannot fit regulation field
Walker Elementary	3	(\$300,000)	\$350,700	<ul style="list-style-type: none">• Playground equipment is new and in good condition; upgrades scheduled for later in bond cycle
William Dandy Middle	3	(\$675,000)		<ul style="list-style-type: none">• Low need with access to diversity of amenities at Osswald Park• Site design challenges
<i>Sub-Total</i>		<i>(\$1,900,000)</i>	<i>\$3,770,700</i>	<i>Redistribute based on city-wide need</i>

Site by Site Review: Proposed Project Scope



Note: Final designs will require approval by the School Board of Broward County.

THURGOOD MARSHALL ELEMENTARY: JOINT USE PARK PROPOSAL



Proposed Budget: \$400,000

Proposed Project Scope

- Playground installation
- Basketball court
- Walking trail

ROCK ISLAND ELEMENTARY SCHOOL: JOINT USE PARK PROPOSAL



Proposed Budget: \$275,000

Proposed Project Scope

- Playground installation
- Fencing



HARBORDALE ELEMENTARY: JOINT USE PARK PROPOSAL



Proposed Budget: \$275,000

Proposed Project Scope

- Playground updates
- Court resurfacing

NORTH FORK ELEMENTARY: JOINT USE PARK PROPOSAL



Proposed Budget: \$785,000

Proposed Project Scope

- Playground installation
- Walking path
- Outdoor learning laboratory

DILLARD 6-12: JOINT USE PARK PROPOSAL



Proposed Budget: \$100,000

Proposed Project Scope

- Tennis court resurfacing

STEPHEN FOSTER ELEMENTARY: JOINT USE PARK PROPOSAL



Proposed Budget: \$475,000

Proposed Project Scope

- Playground updates: PK, K-2, 2rd-5th
- Soccer field
- Walking path with fitness equipment
- Sunshade

WESTWOOD HEIGHTS ELEMENTARY: JOINT USE PARK PROPOSAL



Proposed Budget: \$475,000

Proposed Project Scope

- Sunshade
- Playground updates
- Basketball resurfacing
- Walking trail

STRANAHAN HIGH SCHOOL: JOINT USE PARK PROPOSAL



Proposed Budget: \$350,000

Proposed Project Scope

- Tennis court resurfacing
- Basketball courts
- Fitness equipment

FLORANADA JOINT USE PARK PROPOSAL



Proposed Budget: \$783,000

Proposed Project Scope

- Playground
- Athletic field
- Restroom renovation
- Bleacher shade
- Site furnishings
- ADA improvements

LAUDERDALE MANORS: USE PARK PROPOSAL



Proposed Budget: \$1,856,000

Proposed Project Scope

- Pool renovations
- Community center renovations
- Playground/surfacing/shade
- Water playground replacement
- Solar panels
- ADA improvements

SUNSET PARK JOINT USE: PARK PROPOSAL



Proposed Budget: \$1,029,000

Proposed Project Scope

- Benches
- Bike racks
- Athletic field lighting upgrade
- Playground replacement
- Signage
- Fencing
- Lighting
- ADA improvements

VIRGINIA SHUMAN YOUNG ELEMENTARY: JOINT USE PARK PROPOSAL



Proposed Budget: \$375,000

Proposed Project Scope

- Sunshade
- Playground updates



CROISSANT PARK JOINT: USE PARK PROPOSAL



Proposed Budget: \$2,420,000

Proposed Project Scope

- Community Center Renovations
- Ball field lighting
- Water playground replacement
- Outdoor fitness equipment
- Solar panels
- ADA improvements
- Basketball
- Playground

SUNRISE MIDDLE SCHOOL: JOINT USE PARK PROPOSAL



Proposed Budget: \$1,000,000

Proposed Project Scope

- Pool chiller
- Field upgrades
- Track upgrades
- Fencing
- Benches & picnic tables

WALKER ELEMENTARY: JOINT USE PARK PROPOSAL



Proposed Budget: \$350,700

Proposed Project Scope

- Playground replacement
- Bike racks
- Picnic tables



CITY OF
FORT LAUDERDALE

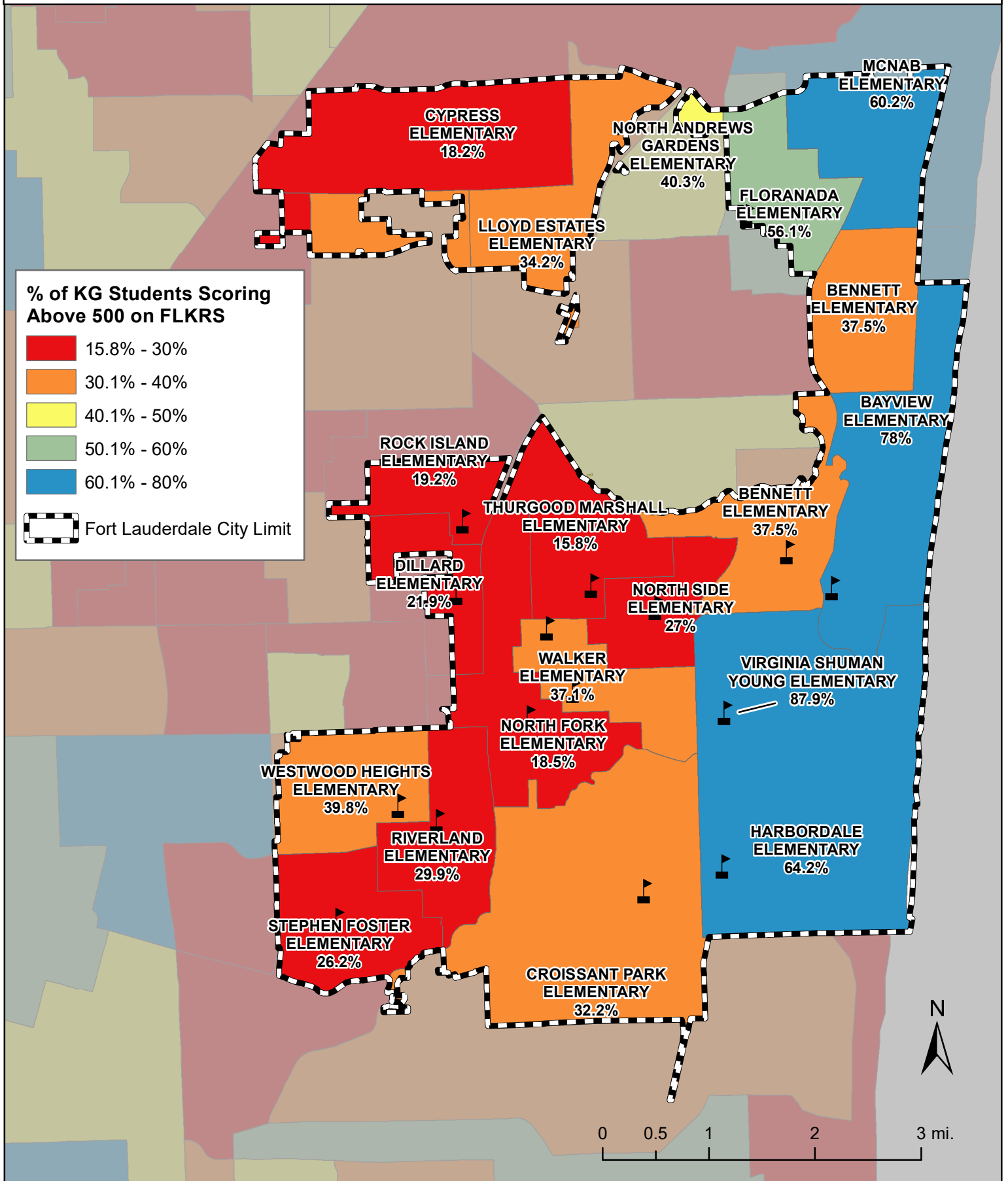


Early Learning

Kindergarten Readiness Analysis

City of Fort Lauderdale

Percentage of Students Scoring Above 500 on the FLKRS Assessment as a Measure of Kindergarten Readiness, 2019/20





CITY OF
FORT LAUDERDALE



Asset Based Community

Development Project

Part of Equity in Education Initiative

Asset Based Community Development

Community ideas & action for educational equity



City of Fort Lauderdale Pilot Project
Funded by Children's Services Council

Pilot City

The Children's Services Council selected the City of Fort Lauderdale to participate in an **innovative, community-driven project** aimed at **dismantling systemic racism**.

Education Focus

The ABCD project focuses on **empowering community** members to develop and implement strengths-based solutions that advance **educational equity**.

ABCD Definition



Asset-based community development is based on the principle of **community-driven development** rather than development driven by external agencies, where communities, public and private sectors work in closer partnership. Yet recognizing that there may also be disagreements between these three 'stakeholders' and that **to date it is the community voice that has lost out.**

Source: Kate Braithwaite. Securing Social Justice in Rural Areas. Carnegie Commission for Rural Community Development. 2005

ABCD Phases



1

Introduction to Asset Based Community Development
ABCD 101 Training in Community
ABCD 101 Training in the Institution

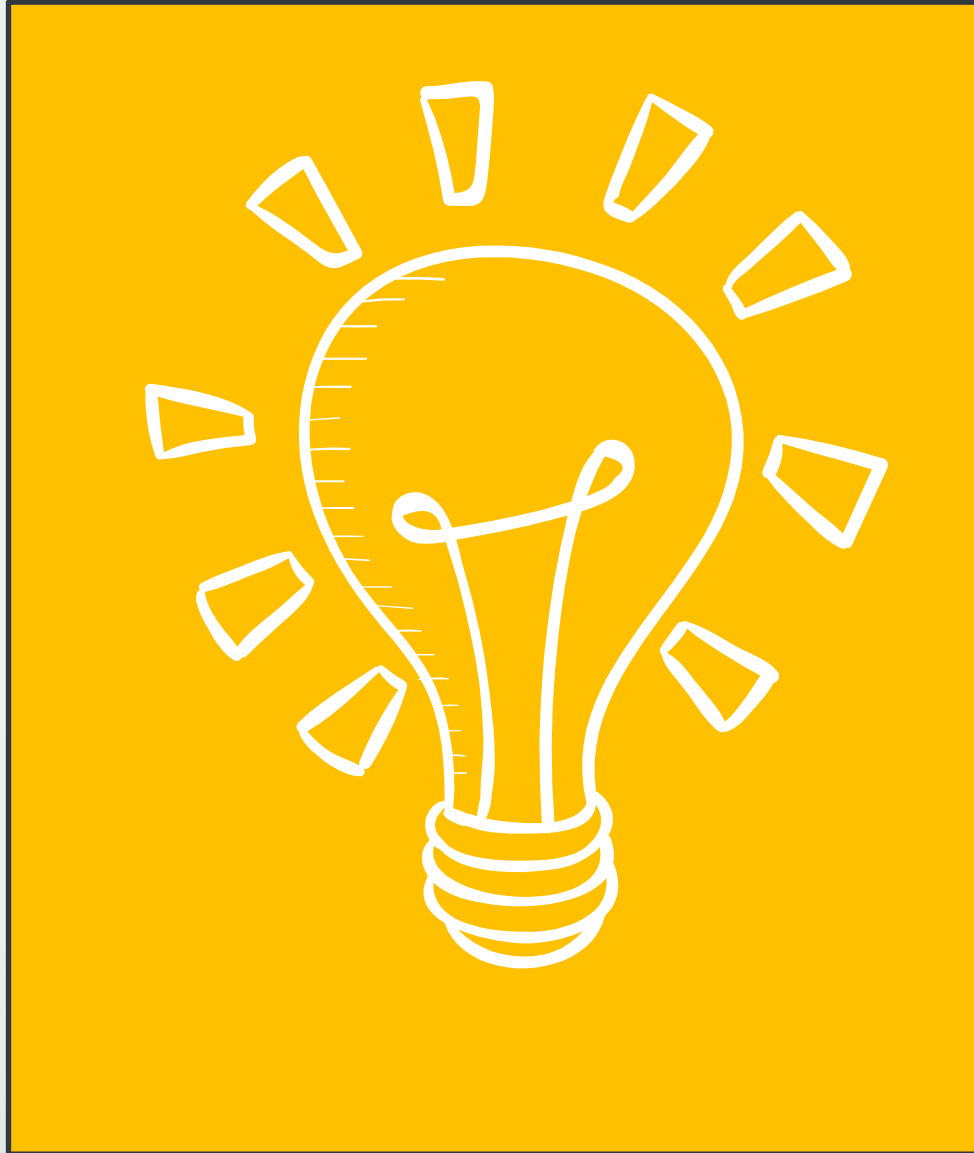
2

Civic Design Team Takes the Lead
Team of neighborhood and institutional leaders
Conduct listening campaign and asset mapping

3

ABC in Action
Small block grants issued
Civic design teams implement & evaluate strategies

ABCD Training: September



Recruitment & Engagement

Trainings with local child-serving organizations in Fort Lauderdale

-Part 1: 9/13/21 @ 3 p.m. or 9/15 @ 10 a.m.

-Part 2: 9/20/21 @ 3 p.m. or 9/22/21 @ 10 a.m.

Community outreach and engagement forums with residents

Civic Design Teams

Reimagining Collaboration with and for community



Civic Design Team's Work

Listening Campaign

Design and conduct listening campaign.

Asset Mapping

Identify community strengths and resources which may have not been widely understood.



Identify Outside Resource Needs

Identify what additional support could be beneficial.

Organize

Organize around an area of focus to advance educational equity.

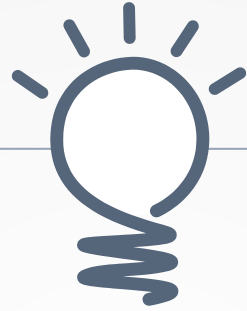
Mobilization



Small block grants invest in Civic Design Team's idea.

Focus on what the community and institution only do together to achieve educational equity

Next Steps



1

Appoint EAB liaison

2

Introductory organization meeting

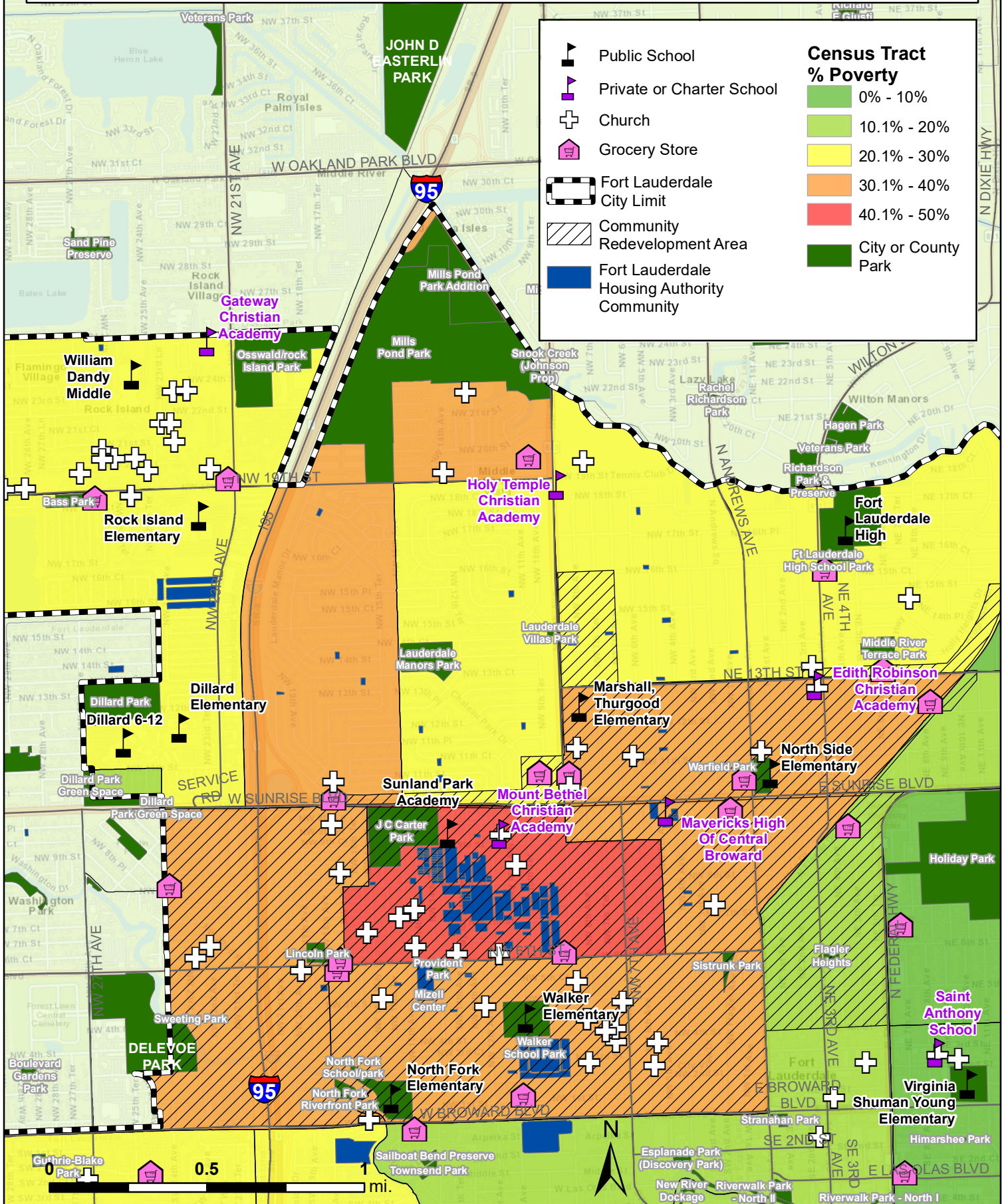
3

Community outreach

4

ABCD 101 Trainings

City of Fort Lauderdale: Poverty Rate by Census Tract with Community Services and Features



Map prepared by Demographics & Enrollment Planning Department