



# LAUDERTRAC



## TRANSPORTATION AND TRAFFIC UPDATE

Tracking Progress on Fort Lauderdale Commission Priorities for 2022

May 2022

### DRIVING TRAFFIC CONDITION IMPROVEMENTS WITH TECHNOLOGY

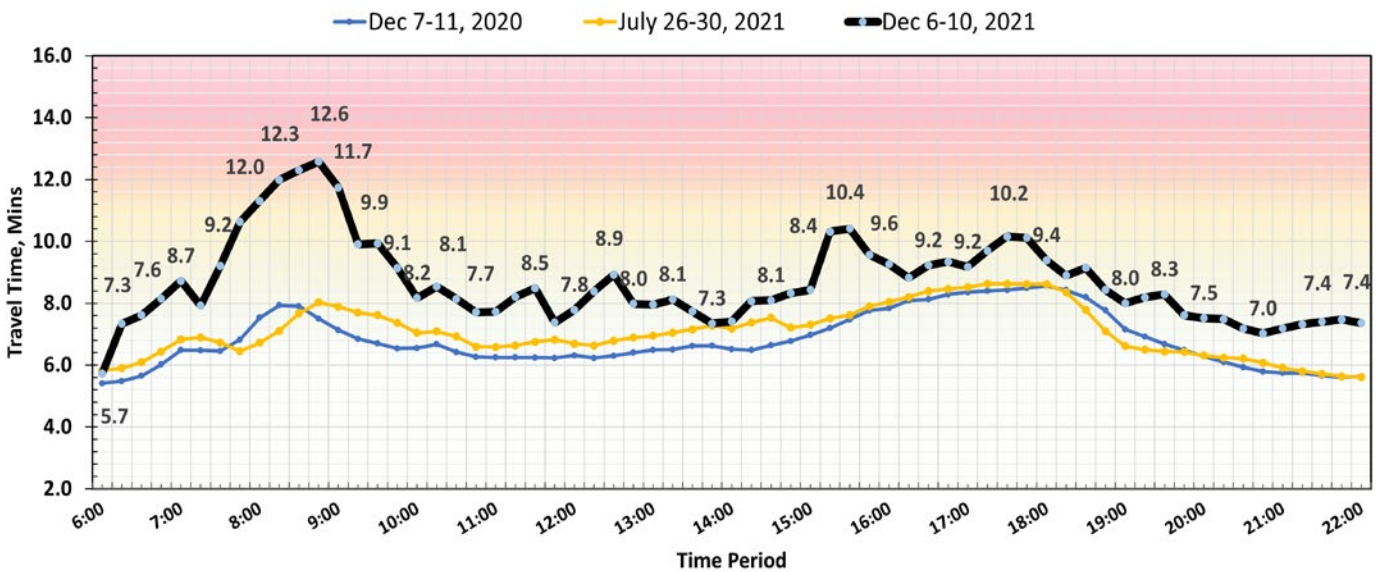
Neighbors have consistently expressed traffic as a top area for improvement in the Neighbor Survey. Results from the most recent survey in 2021 identified that only 19% of respondents were either very satisfied or satisfied with the overall flow of traffic. In response, the City is leveraging data and analytical tools to better understand traffic conditions and identify where improvements will be most effective to improve traffic conditions.

#### BlueTOAD Devices

BlueTOAD devices are posted along corridors to collect travel-time data. BlueTOAD uses Bluetooth technology to calculate the time it takes for vehicles to travel between two or more Bluetooth sensors to determine vehicle travel times and speed. This data is automatically collected from vehicles with enabled Bluetooth systems and aggregated to analyze traffic patterns and trends. Bluetooth is used since it is an open wireless technology standard for exchanging data over short distances from fixed and mobile devices. Examples of Bluetooth devices includes hands free technology in vehicles, headphones, mobile phones, wearable technology, etc. Ultimately, this Intelligent Transportation System (ITS) collects information in real-time to manage roadway operations.

The City of Fort Lauderdale is a partner in the larger network that includes Broward County and the Florida Department of Transportation. The collected data helps traffic engineers to make data-driven decisions to improve the operations of road networks. In the recent past, the City has added seven devices to the network and is scheduled to install seven more in the coming months.

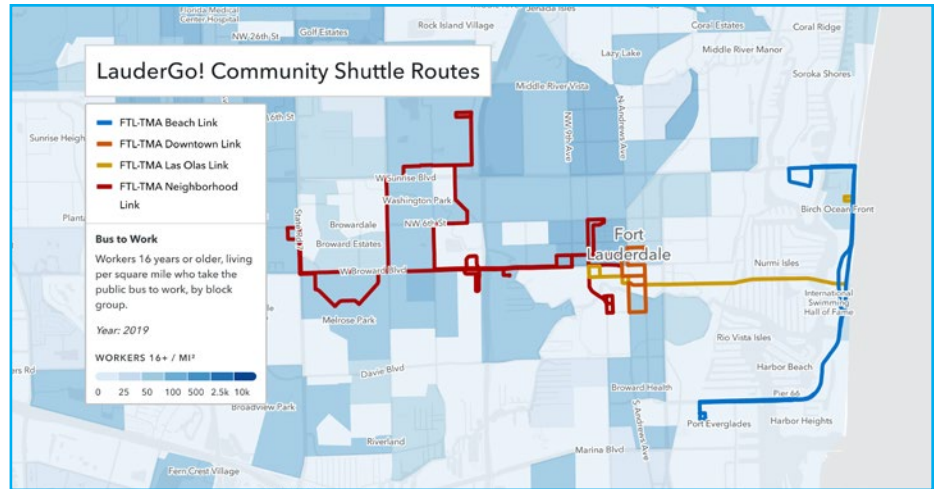
Broward Boulevard – Eastbound | Travel Time, Weekly Average



Example of traffic data collected from BlueToad Devices

## Remix Transportation Planning

The City of Fort Lauderdale is currently using Remix, a transportation planning software, to improve mobility, whether by transit or vehicle, across the City. Using data, the software helps the City to design and evaluate public transit and plan for street design concepts. Remix automates the process of route and schedule scenario testing, letting transportation planners draw routes onto a map and immediately see a potential schedule and fleet requirements. With this tool, the City better understands the impacts of routes, detours, and street design to support neighbors' transit options while also reducing traffic congestion.



LauderGo! Community Shuttle Routes mapped using the Remix software

## Speed Radar Signs

Speed radar signs are another effective tool used by the City to alert drivers of their speed and reinforce legal speed limits. Updated speed radar technology installed this fiscal year captures speed and volume data in real-time through a cloud service (provided by the City's speed radar sign provider). The new high-tech addition helps City staff to better track the behaviors of motorists throughout our neighborhoods and will assist in determining further traffic calming efforts in the future.

In 2022, speed radar signs have been installed or replaced in the following locations:

- ▶ Harbour Inlet at 1600 Seabreeze Boulevard
- ▶ Coral Ridge Country Club Estates at 4733 Bayview Drive
- ▶ Knoll Ridge at 5440 NE 22nd Avenue
- ▶ Dorsey Riverbend at 430 NW 4th Street
- ▶ Coral Ridge Isles at 5220 NE 18th Avenue
- ▶ Nurmi Isles at 100 Hendricks Isle
- ▶ South Middle River at 214 NE 15th Street
- ▶ Lake Ridge at 1108 NE 15 Avenue



## GET INFORMATION AND UPDATES



CITY OF FORT LAUDERDALE

**24-hour Neighbor Call Center:** 954-828-8000

**Website:** [www.fortlauderdale.gov](http://www.fortlauderdale.gov)

**LauderStreet:** [www.fortlauderdale.gov/lauderstreet](http://www.fortlauderdale.gov/lauderstreet)

**Email Updates:** [www.fortlauderdale.gov/enews](http://www.fortlauderdale.gov/enews)

**Facebook:** [www.facebook.com/CityofFortLauderdale](http://www.facebook.com/CityofFortLauderdale)

**Twitter:** [www.twitter.com/FTLCityNews](http://www.twitter.com/FTLCityNews)

**Nextdoor:** [www.nextdoor.com](http://www.nextdoor.com)

**YouTube:** [www.youtube.com/CityofFortLauderdale](http://www.youtube.com/CityofFortLauderdale)

**Instagram:** [www.instagram.com/CityofFortLauderdale](http://www.instagram.com/CityofFortLauderdale)