



City of Fort Lauderdale

Parks Advisory Board Bond Update

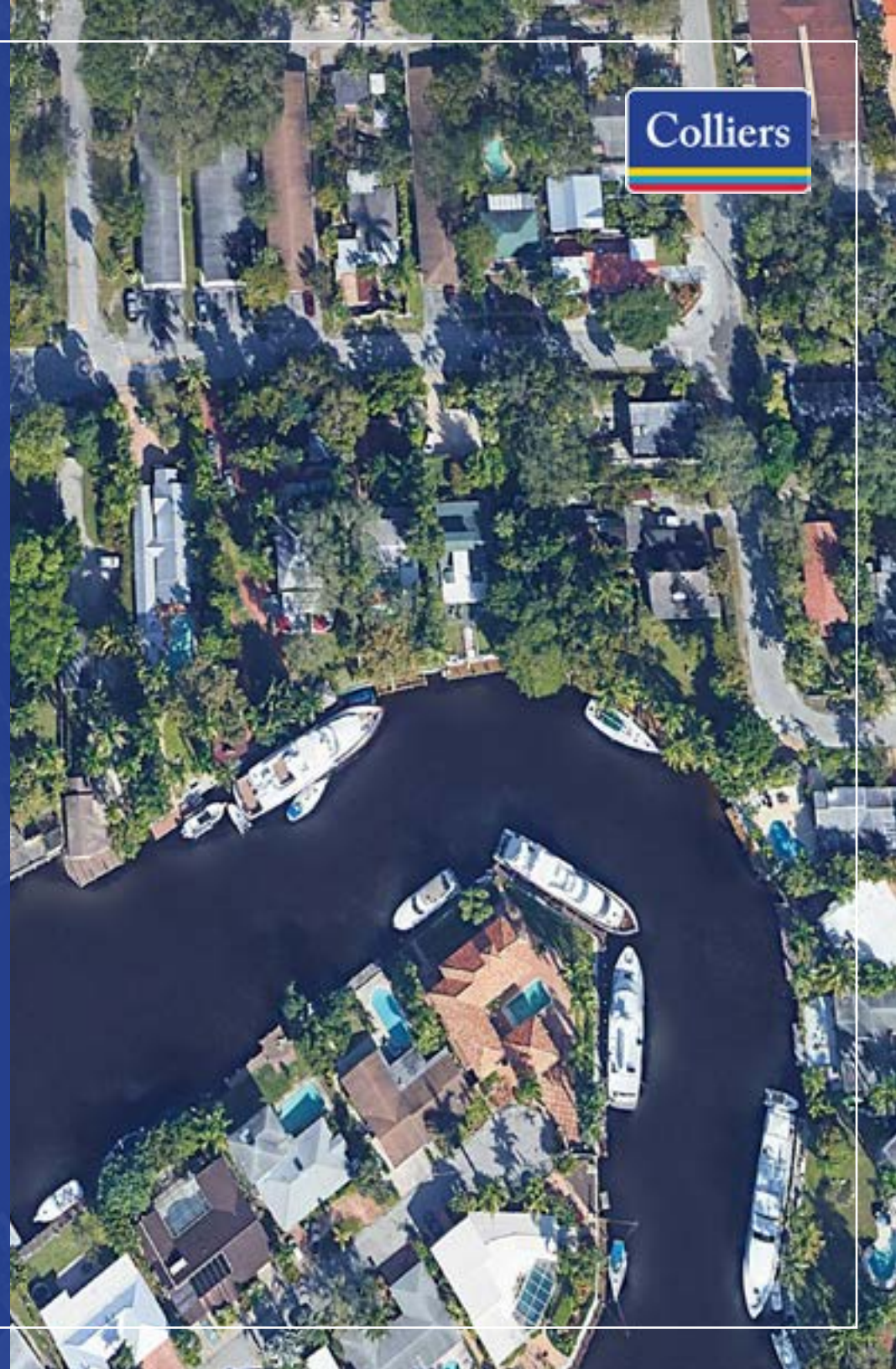
June 2022

Ken Krasnow

Vice Chairman
+1 914 589 5321
ken.krasnow@colliers.com

Brooke Mosier

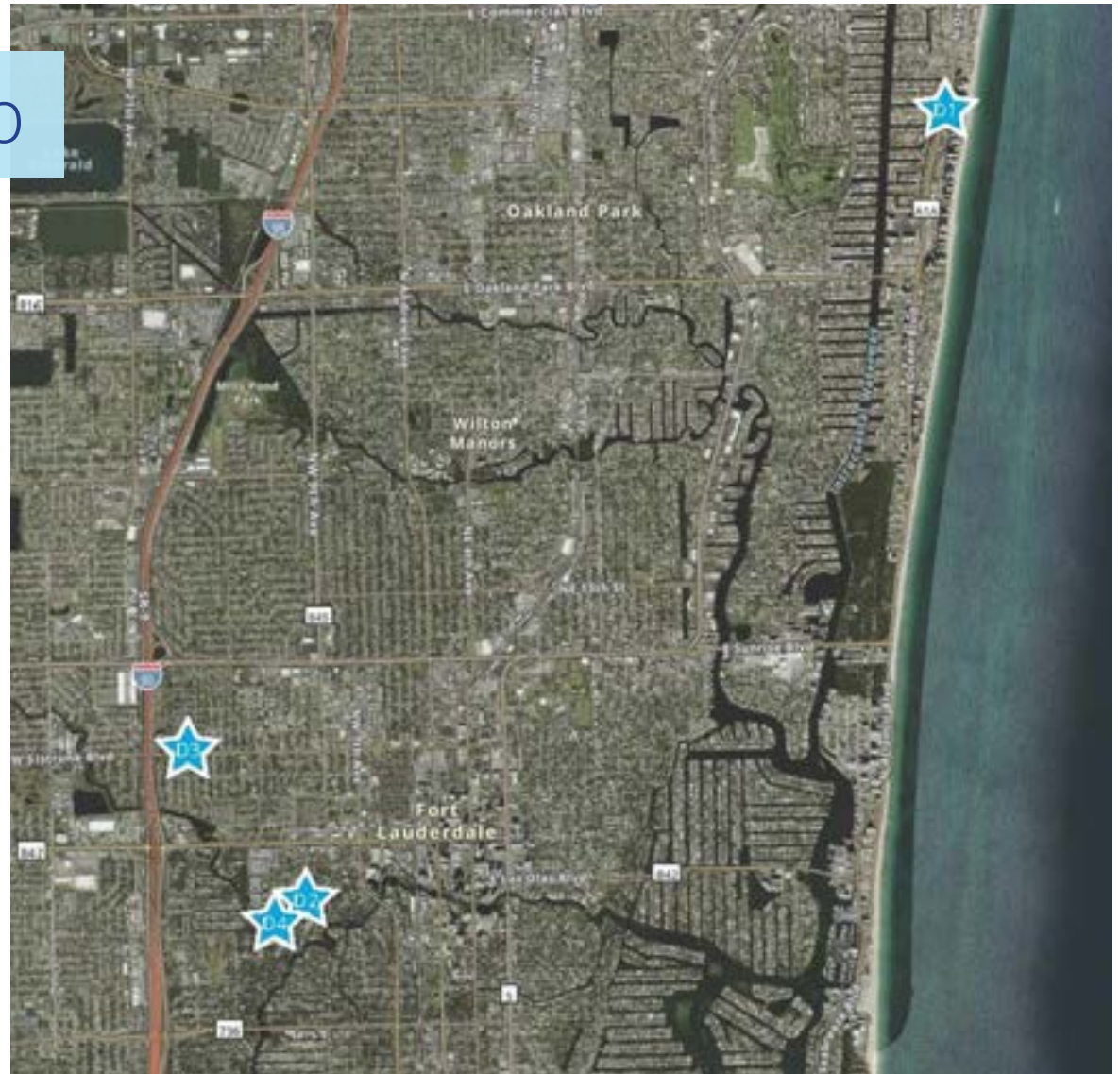
Director
+1 561 512 3488
brooke.mosier@colliers.com



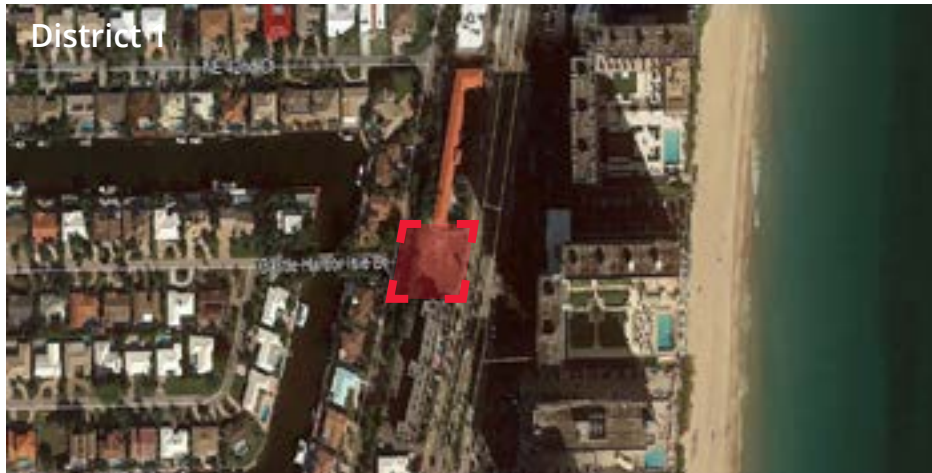
District Location Map

Progress/Goals

- Acquired 4.5+ acres total for new greenspace
- Spent a total of \$7,805,000 to date
- \$22,195,000 still available for acquisitions



Park Acquisitions



District 1
4201 N Ocean Blvd.
Negotiated Price: \$1.09M
Size: 13,356 SF



District 3
NW 6th Street - Lincoln Park
Negotiated Price: \$125,000
Size: 4,482 SF



District 2
1016 Waverly Road
Negotiated Price: \$2.54M
Size: 2.01 Acres



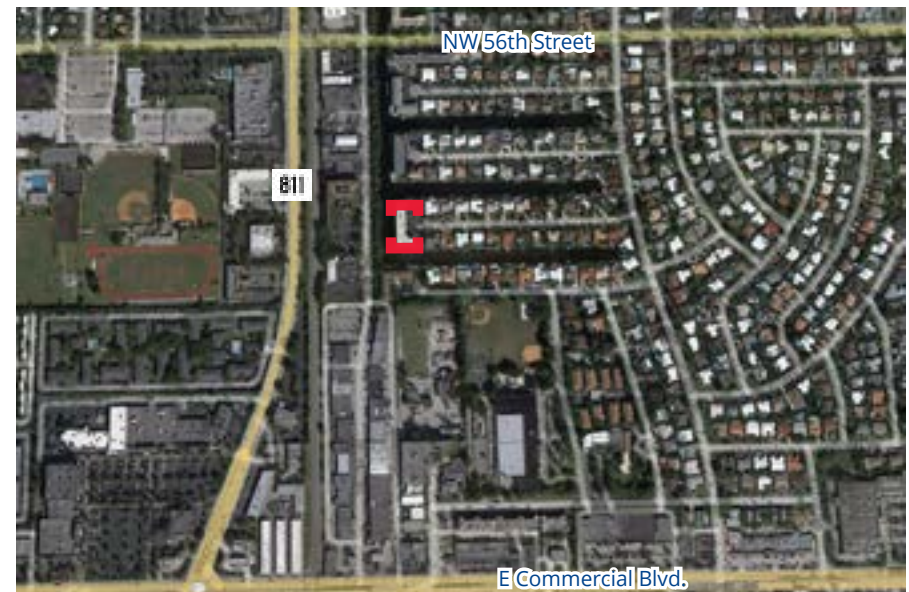
District 4
SW 5th Court & SW 12th Ave. Riverside Park
Negotiated Price: \$4.050M
Size: 2.16 Acres
Expand Riverside Park/Waterfront



Potential Acquisition - District 1 - Coral Ridge Isles

- 1400 NE 53rd Court
- Land Size: .86 acres
- Existing 31,200 sf Multi-family building (33 units)
- Proposed Purchase Price: \$7.75M
(Based on Contract +/- 10% of appraisals)
- Waterfront Access/ Kayak Launch for neighborhood

**Currently D1 has no waterfront access north of George English Park*



Challenges

- Current Real Estate Market
- Environmental Issues- contamination of land
- Sensitive to effects on surrounding neighbors
- Any associated costs, i.e. demolition
- Decreased property taxes
- Timeline

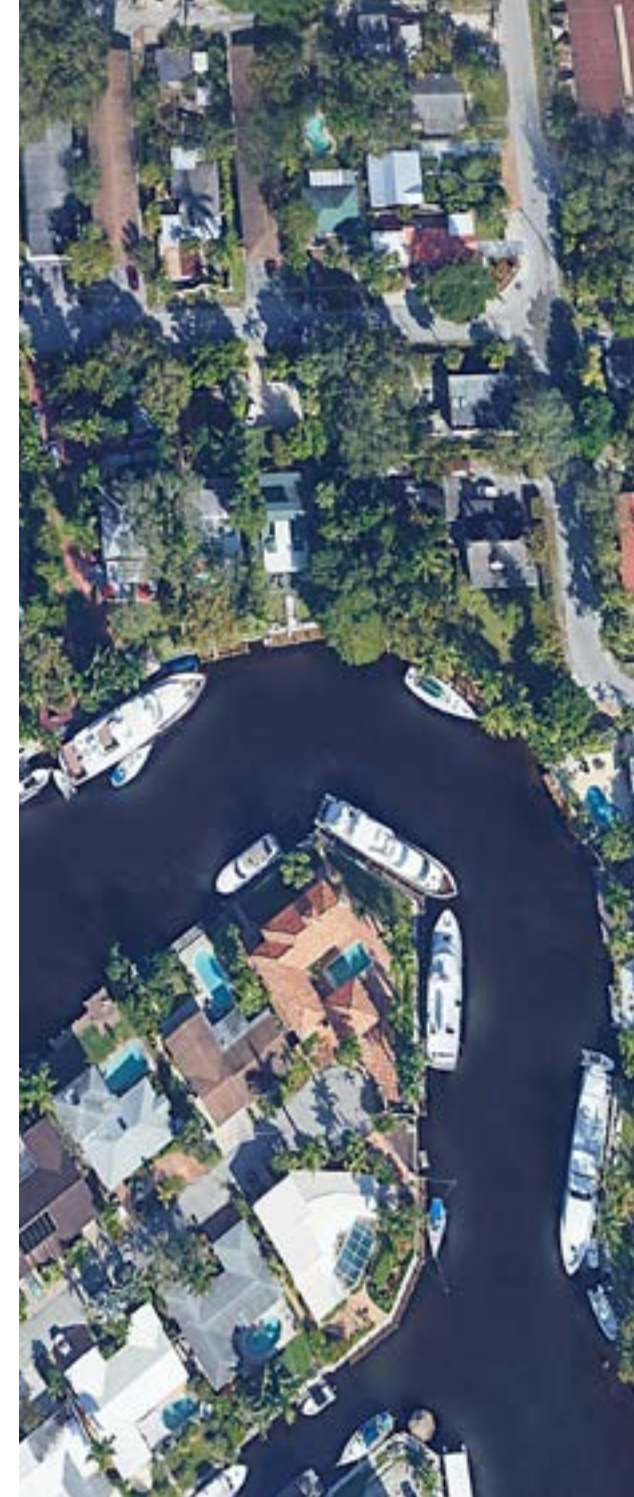
Next Steps

Priorities:

- Identify properties within areas of need
- Waterfront lots
- Corner lots
- Large tracts of land

Focus:

- Kayak Launch
- Pickle Ball (Indoor/Outdoor)
- Dog Parks
- Downtown Parks – based on growth projections
- Skate Park
- Neighborhood Pocket Parks
- A1A area
- Coral Ridge
- Palm Aire
- Middle River Terrace
- Sail Boat Bend
- Riverside Park



Questions/Comments ?

Ken Krasnow

Vice Chairman
+1 914 589 5321
ken.krasnow@colliers.com

Brooke Mosier

Director
+1 561 512 3488
brooke.mosier@colliers.com

