

Huizenga Park.

Parks, Recreation & Beaches
Advisory Board | 6/22/22



1 HUIZENGA PLAZA

2.1 acres
Anchored by a large fountain, this riverfront park currently consists of a large lawn, amphitheater, walkways, picnic tables & benches.

2 STRANAHAN PARK

1.6 acres
This botanical park is attached to the Fort Lauderdale Woman's Club. The private/public partnership features over 500 varieties of plants within six gardens.

3 SISTRUNK PARK

1.7 acres
This park is home to many neighborhood and cultural events. It features a mounded lawn with community mural and a playground.

4 PETER FELDMAN PARK

1.3 acres
This park offers a lawn, playground, benches, and shaded picnic tables.

5 ESPLANADE PARK

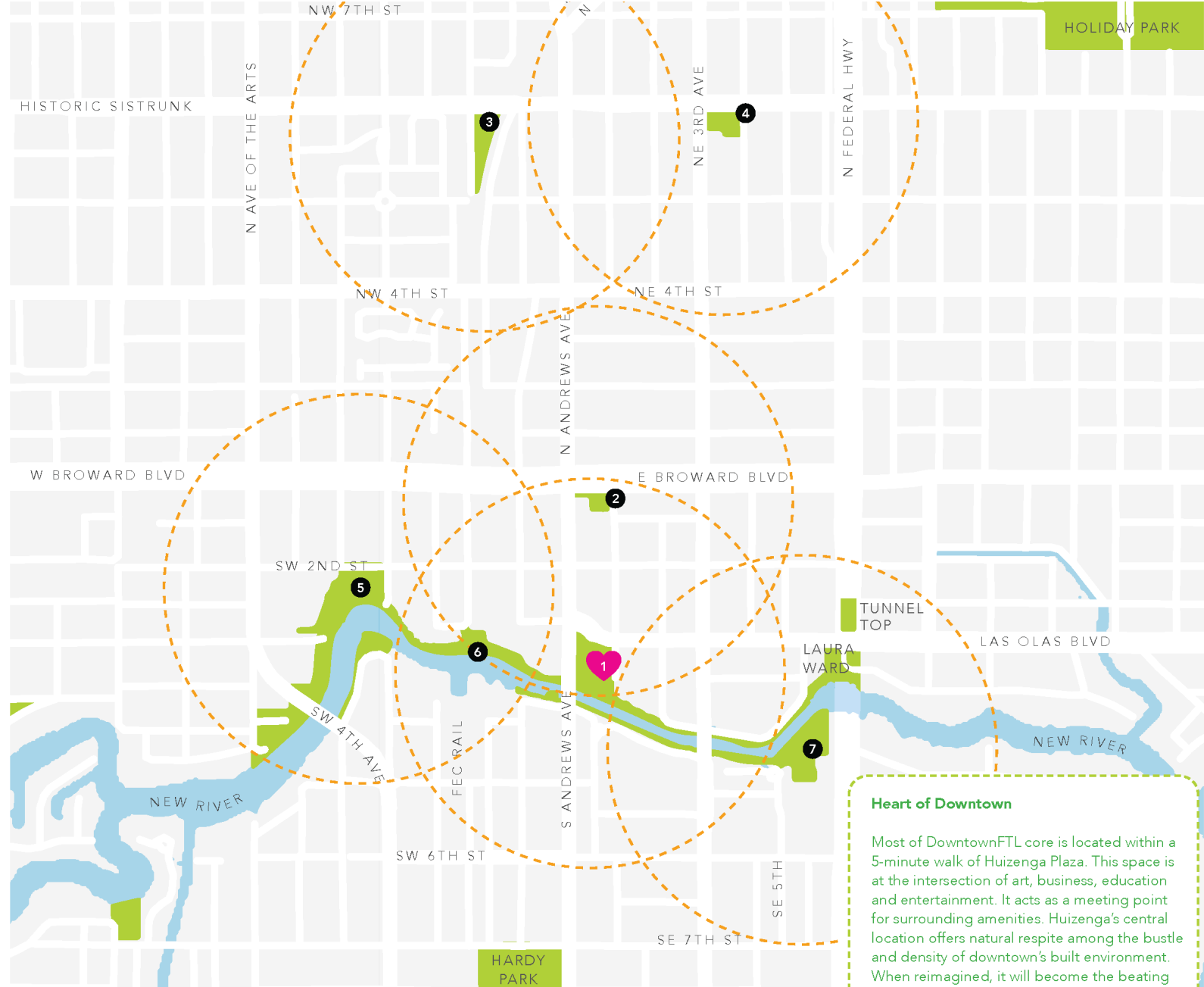
2.4 acres
The riverside park features a covered stage and hosts many year-round events. It is at one end of the city's Riverwalk.

6 THE RIVERWALK

18.2 acres / 1.5 miles
This linear promenade sits next to the New River, providing access for residents and visitors. The park consists of a meandering walkway linking together attractions, restaurants and shops.

7 SMOKER PARK

1.7 acres
On the south side of the Riverwalk is a conservation area called Smoker Park. This park is mainly used for leisure activities, such as taking a stroll.



Heart of Downtown

Most of DowntownFTL core is located within a 5-minute walk of Huizenga Plaza. This space is at the intersection of art, business, education and entertainment. It acts as a meeting point for surrounding amenities. Huizenga's central location offers natural respite among the bustle and density of downtown's built environment. When reimagined, it will become the beating heart of DowntownFTL.

Urban Core Parks

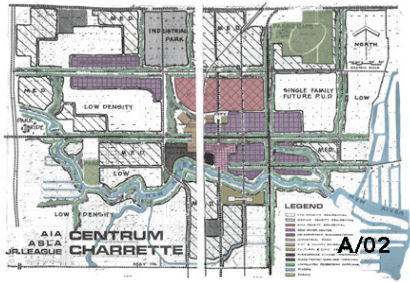
Park History



1970

The DDA purchased the land for Huizenga Plaza in the 1970s as part of a larger land acquisition effort to revitalize Downtown Fort Lauderdale by bringing civic and cultural amenities to the urban core.

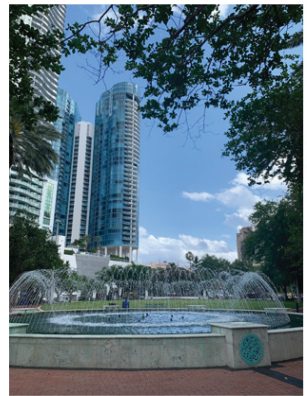
The DDA initiated land use and zoning policy for a compact, mixed-use Downtown, allowing for the development of thousands of residential units to create a live-work-play destination.



1980

1996

In 1996, the DDA evaluated the development potential for the site and determined that the best use would be for a signature park centered on the Riverwalk.



1997 original concept

1997

The DDA approved the design of a \$1 million dollar fountain for Wayne Huizenga, a prominent American businessman and entrepreneur. The original design featured life-like bronze wildlife sculptures of birds, alligators and other animals that live in the Everglades erected 30 feet high. The renovation of other features in the park was also done by Landscape Architect, Rhett Roy.

1998

This Yellow Tabebuia species was introduced to Broward County by Annie Beck, who started the first garden club in Fort Lauderdale. Beck planted a yellow tab in the 1930s. Tom Chancey, an arborist, saved the tree in 1998 by supervising its relocation from Beck's 334 E. Las Olas property.

2003

The park is named after H. Wayne Huizenga to recognize his contributions to the growth of Downtown Fort Lauderdale, Broward County and South Florida. He and his late wife, Marti, were generous community philanthropists who left a lasting positive impact on the community.



2021

What's next for Huizenga Park?
The reimagined park will become the physical heart of the DowntownFTL park network, connected by the New River, Las Olas Boulevard and Andrews Avenue. The new park will demonstrate the DDA's commitment to the future health and prosperity of the city and inspire more investments in downtown public spaces.



The vision for reimagining Huizenga Park has been inspired by a series of recommendations made by national experts from the Urban Land Institute in 2019 on how to invest in DowntownFTL's parks.



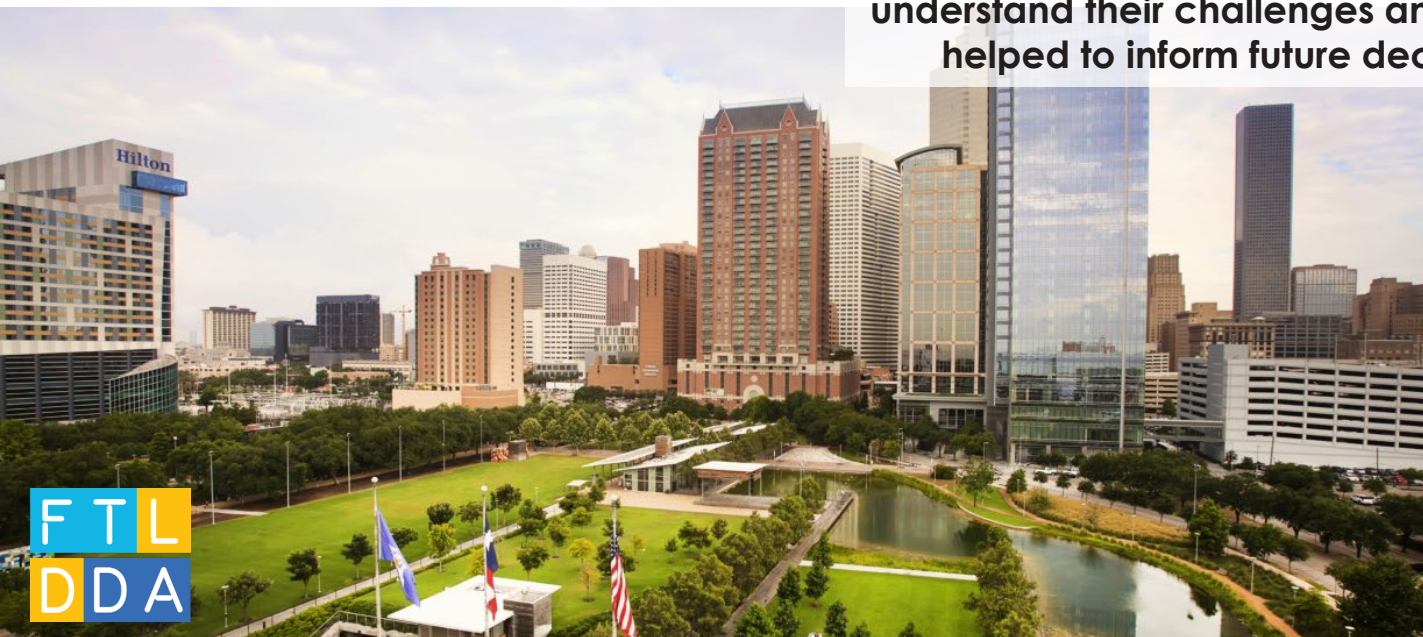
FTL
DDA



Katie Troutman Jeanne Myerson Garret Avery Josh Murphy Davon ... Nan Robrer



From Dallas to Detroit, Sarasota to Tampa, Minneapolis and Houston, the DDA studies existing successful urban parks to understand their challenges and opportunities. This information helped to inform future decisions about Huizenga Park.





Fountain

Existing
Trees

Annie
Beck
Tree

Lawn

1st
Avenue

Andrews
Bridge

Amphitheater

Legacy Oak

Large
Poinciana

Riverwalk

New River

Existing Conditions

Pump
House



Existing Conditions



**Existing
Circulation**



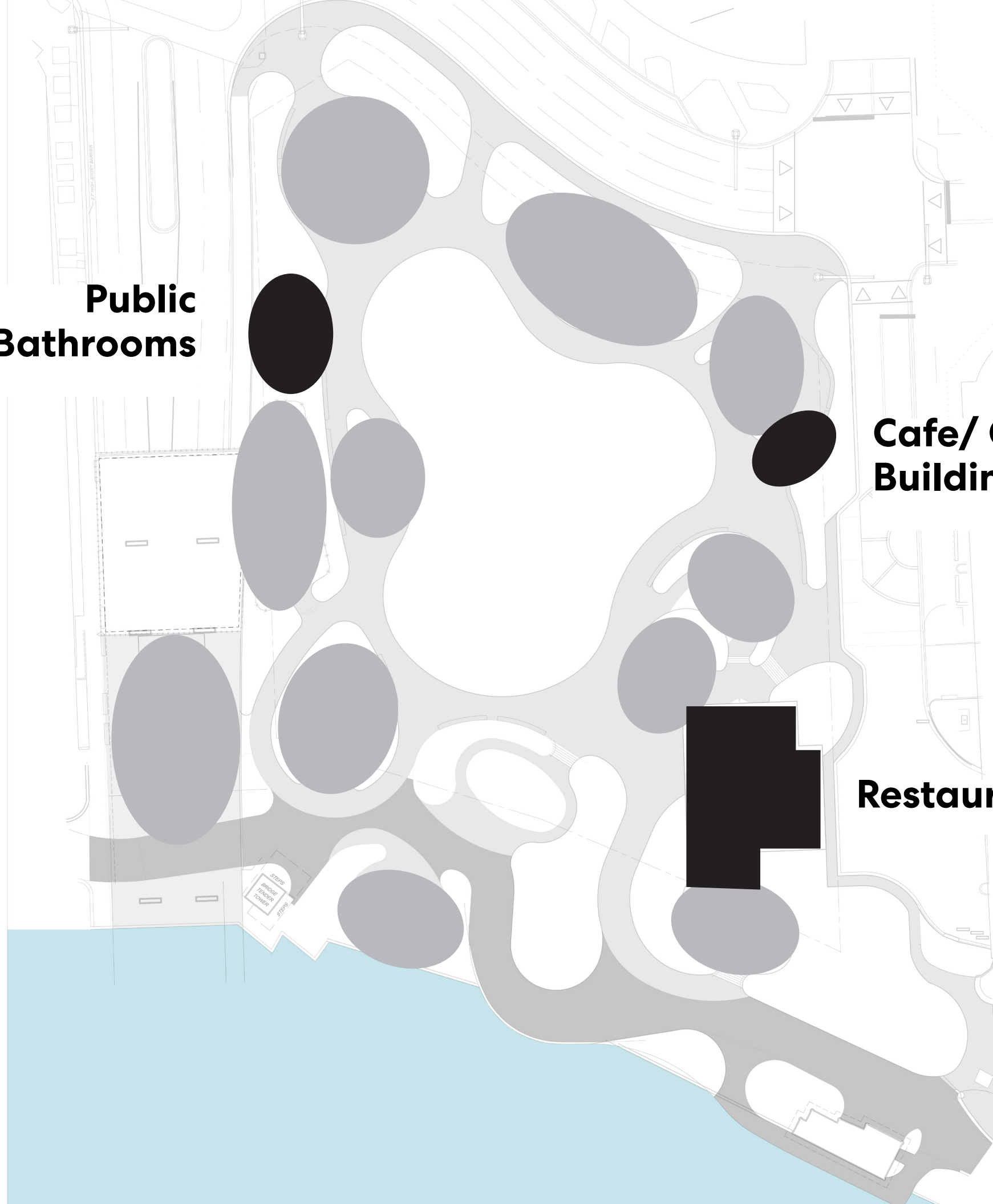
**Proposed
Circulation**

**Public
Bathrooms**

**Cafe/ Concessions
Building**

Restaurant

**New
Buildings**





Fountain

Bathroom

Cafe Terrace

Entry Plaza

Rock Outcrop

Civic Lawn

Concession

Dog Run

Park Terrace

Under Bridge Plaza

Moundscape

The Deck

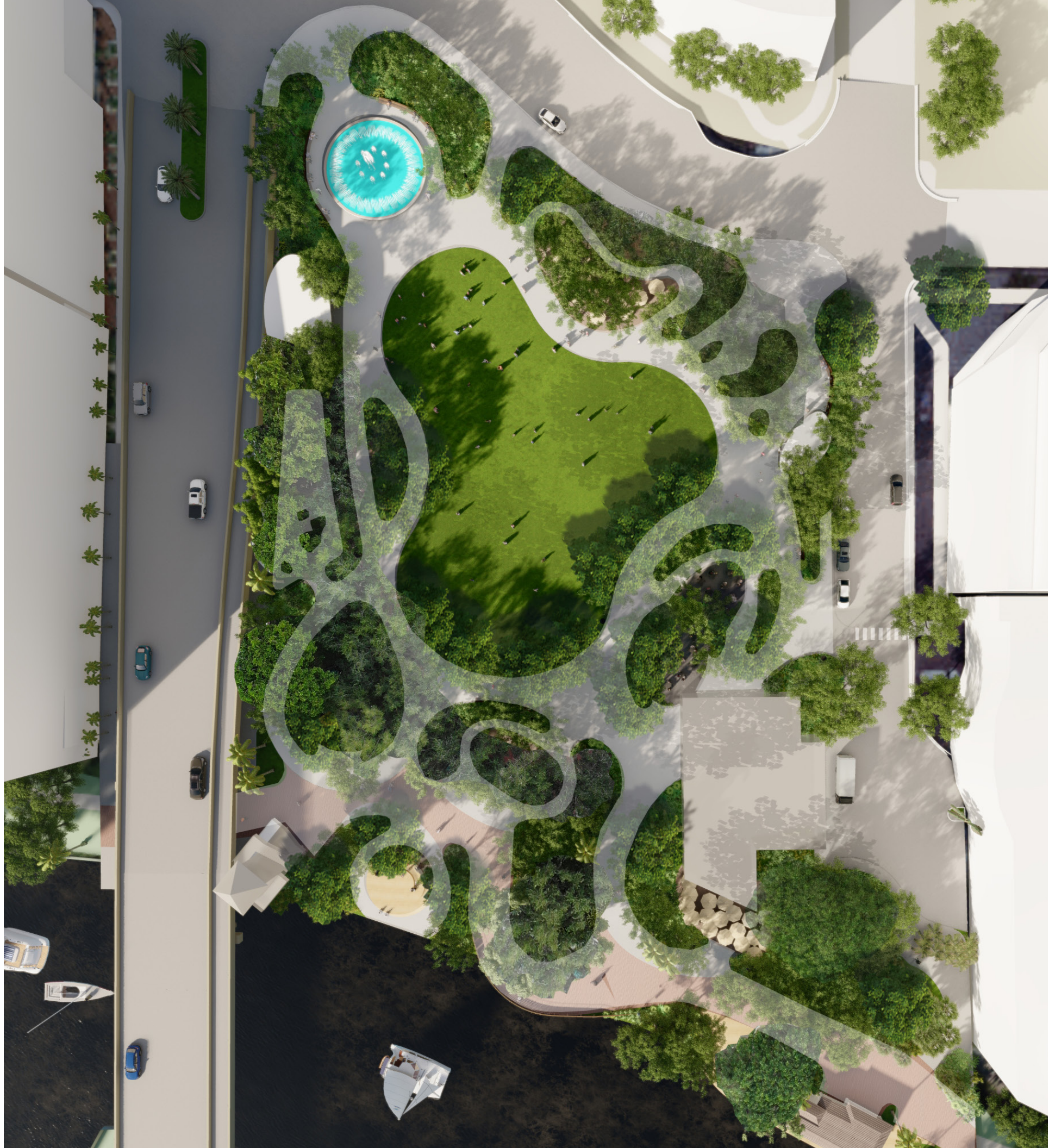
Restaurant

Riverwalk

Riverwalk Terrace

Dining Terrace

Plan Diagram



Proposed Plan



Las Olas Boulevard

Fountain

Cafe Terrace

Las Olas Boulevard

Bathrooms

Entry Plaza

Cafe

Rock Outcrop

Civic Lawn

Dog Run

Park Terrace

Under bridge Plaza (Below)

Moundscape

The Deck

Restaurant

Riverwalk

Dining Terrace

Andrews Bridge

Riverwalk Terrace

Overlook

New River

Pump House

Proposed Plan



















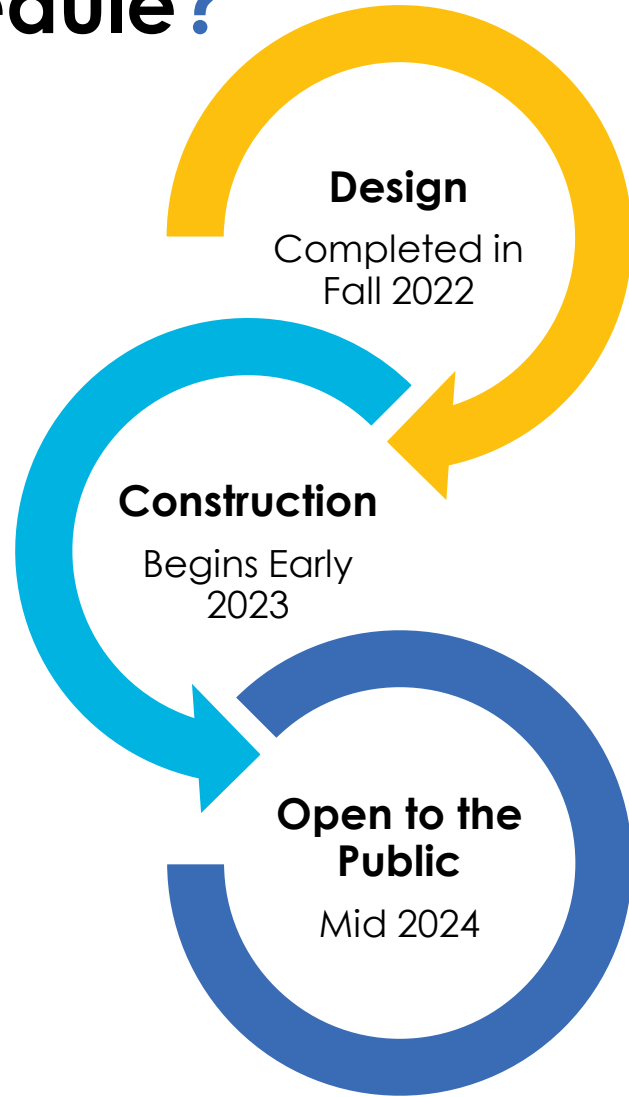




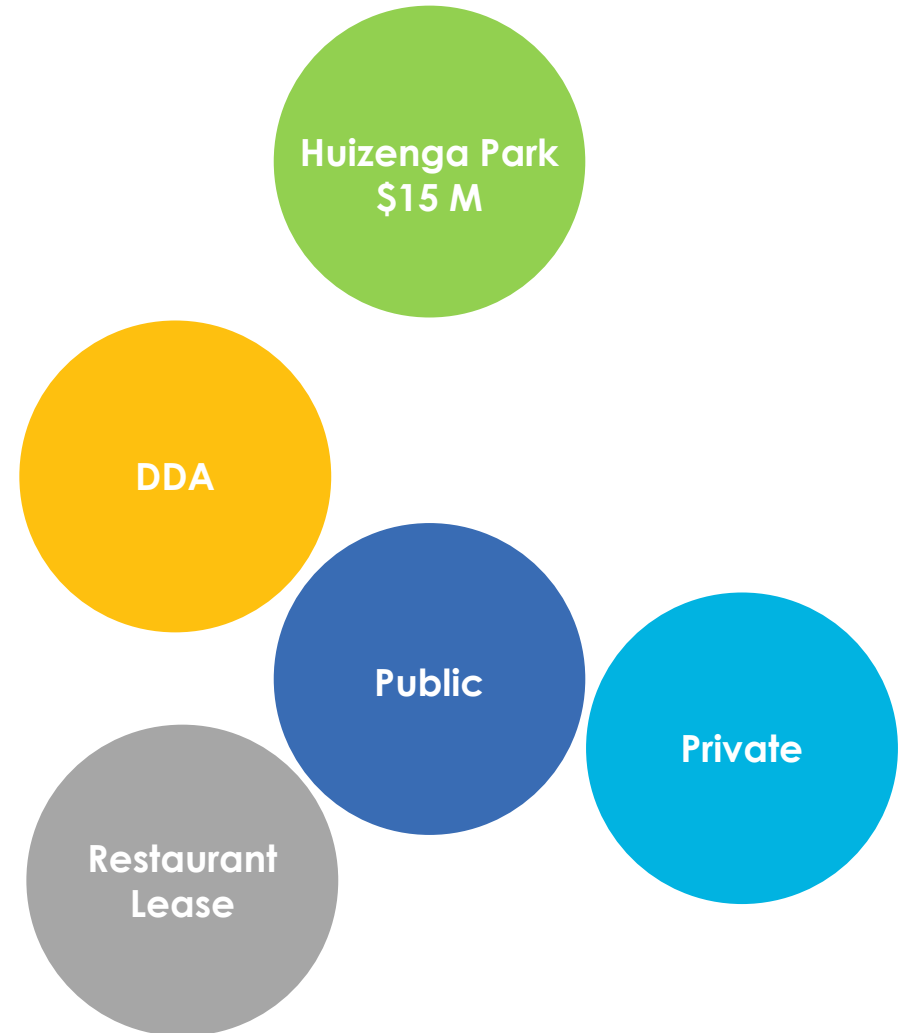




What is the Project's Schedule?



How is the Park Funded?



Connect With Us

Connect with us @ddaftl



Take the Survey

