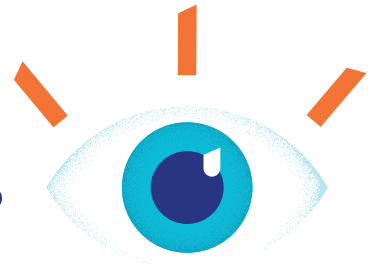




Set your sights on progressive lenses



Progressive lens selection list* Effective date: January 2024

Tier I progressive lenses

- Essilor Adaptar[®], Adaptar[®] DS, Adaptar[®] Short DS
- Essilor Computer[™]
- Essilor Ideal[™], Ideal[™] Short
- Essilor Natural[®] (Includes Digital)
- Essilor Ovation[®] (Includes Digital)
- Essilor SmallFit[™] (Includes Digital)
- Essilor Varilux[®] Liberty[™] 3.0
- HOYA Hoyalux[®] GP Wide Backside
- Shamir Computer[™]
- Shamir Element[™], Element[™] Short
- Shamir Genesis HD
- Shamir Workspace[™]
- Signet Armorlite KODAK Easy (14, 18)
- Signet Armorlite KODAK Precise PB, Precise Short PB
- Signet Armorlite, Navigator[®] FBS, Navigator Short[®] FBS
- Younger Image[®]

Tier II progressive lenses

- Essilor Accolade[™]
- Essilor Ideal[™] Advanced, Ideal[™] Advanced Wrap
- Essilor Varilux Comfort[®], Comfort Short[™]
- Essilor Varilux Comfort DRx[™], Comfort Short DRx[™]
- HOYA Amplitude[®] BKST[™], Amplitude[®] BKST[™] Mini
- HOYA Summit[®] ecp BKS
- HOYA Summit[®] cd BKS
- Shamir Autograph II – Office[™]
- Shamir FirstPAL[™]
- Shamir InTouch[™] (15, 18)
- Shamir Spectrum+[™] (14, 16, 18)
- Signet Armorlite KODAK Precise Plus
- Vision Ease Novel[®]

Tier III progressive lenses

- Essilor Accolade Freedom[™]
- Essilor Varilux[®] Comfort Max, Comfort Max Fit^{**}
- Essilor Varilux Comfort[®] W2+, W2+ EC, W2+ Fit
- Essilor Varilux Physio DRx[™], Physio Short DRx[™]
- HOYA Amplitude[®] HD3, Amplitude[®] HD3 Mini
- HOYA Array[®] 2 (Fixed & Variable)
- HOYA Array[®] 2 High Base Wrap (Fixed & Variable)
- Shamir Attitude III[®] – Fashion, Fashion Short, Sport
- Shamir Autograph II – Attitude[™] (15, 18)
- Shamir Autograph[®] II+ (Fixed & Variable)
- Signet Armorlite KODAK Unique[™]
- Signet Armorlite KODAK Unique DRO

Tier IV progressive lenses

- Essilor Varilux[®] Physio[®] W3+, W3+ EC, W3+ Fit^{**}
- Essilor Ray-Ban Varilux[®] Sun-Xtra^{™**}
- HOYA iD Lifestyle[®] 3 Indoor, Outdoor, Urban
- Shamir Autograph[®] III (Fixed & Variable)
- Shamir Autograph Intelligence[™] (Fixed & Variable)
- Signet Armorlite KODAK Unique DRO[®]HD

Tier V progressive lenses

- Essilor Varilux[®] X Design, Varilux[®] X 4D, Varilux[®] X Fit^{**}
- Essilor Varilux[®] XR Design
- HOYA iD MyStyle[®] 2 Adventure, Detail, Modern, Stable

More to see

Get other progressive lenses at a discount when you get lenses from a participating provider. To see coverage details, log on to myuhcvision.com.

United Healthcare

*The selection list is subject to change. **Ray-Ban[®] Authentic package products are available through limited providers for select lenses.

Non-covered services and discounts may not be available from all providers. Please confirm cost and coverage with your provider prior to purchasing.

All trademarks are the property of their respective owners.

The company does not discriminate on the basis of race, color, national origin, sex, age or disability in health programs and activities.

We provide free services to help you communicated with us, such as letters in other languages or large print. Or, you can ask for an interpreter. To ask for help, please call 1-800-638-3120, TTY 711.

ATENCIÓN: Si habla español (Spanish), hay de asistencia de idiomas, sin cargo, a su disposición. Llame al número de teléfono gratuito que aparece en su tarjeta de identificación.

請注意：如果您說中文 (Chinese) 我們免費為您提供語言協助服務。請致電：1-800-638-3120, TTY 711.

UnitedHealthcare vision coverage provided by or through UnitedHealthcare Insurance Company, located in Hartford, Connecticut, UnitedHealthcare Insurance Company of New York, located in Islandia, New York, or their affiliates. Administrative services provided by Spectera, Inc., United HealthCare Services, Inc. or their affiliates. Plans sold in Texas use policy form number VPOL.06.TX, VPOL.13.TX or VPOL.18.TX and associated COC form number VCOC.INT.06.TX, VCOC.CER.13.TX or VCOC.18.TX. Plans sold in Virginia use policy form number VPOL.06.VA, VPOL.13.VA or VPOL.18.VA and associated COC form number VCOC.INT.06.VA, VCOC.CER.13.VA or VCOC.18.VA. This policy has exclusions, limitations and terms under which the policy may be continued in force or discontinued. For costs and complete details of the coverage, contact either your broker or the company.